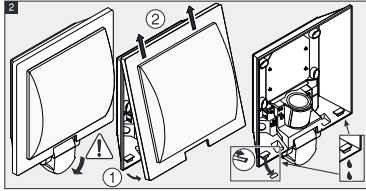
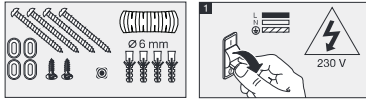


L22 S

L20 S

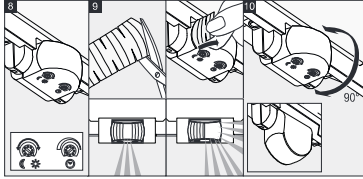
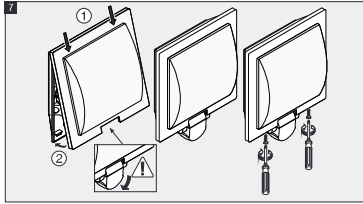
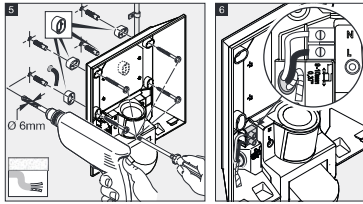
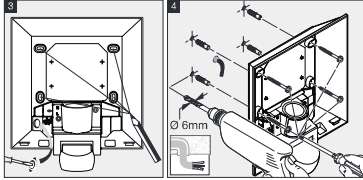
DE	GB	FR	NL	IT	ES	PT	SE	DK	FI	NO	GR	TR
HU	CZ	SK	PL	RO	SI	HR	EE	LT	LV	RU		

	L 20 S: 250 x 230 x 85 mm L 22 S: 286 x 162 x 88 mm		max. 60 W / E27
	2 m		IP 44
	180°		2-2000 Lux
	max. 10 m		8 s - 35 min
	220-240 V, 50/60 Hz		-20 °C / +40 °C



110059024 08/2017_K

1



2

Principle

Movement triggers light. For your convenience and safety, the integrated pyroelectric infrared detector senses the invisible heat radiated from moving objects (people, animals, etc.). The heat detected in this way is converted electronically into a signal that activates the light connected. Heat radiation is not detected through obstacles, such as walls or glass, and will therefore not activate the light.

Safety warnings

- During installation, the electrical wiring being connected must be dead. Therefore, switch off the power first and use a voltage tester to check that the power supply is disconnected.
- Installing the light involves work on the mains voltage supply. This work must therefore be carried out by a specialist in accordance with the applicable national wiring regulations and electrical operating conditions (BS-7671:2018, AT-476-010/02:2018, CH-SEV 1000)
- Only use genuine replacement parts.
- Do not disassemble the light yourself! It must only be repaired by a specialist workshop.

Installation

(Shown using the example of product L 20 S)
L = live conductor (usually black or brown), N = neutral conductor (usually blue)
PE = any protective earth conductor (green/yellow)
Attention: Insulate any PE protective earth conductor in the power supply cable with adhesive tape.

Connection: concealed wiring Connection with surface wiring using spacers.
Attention: A mains switch for switching the light ON and OFF can of course be installed in the mains lead. Important: Reversing the connections may result in damage to the unit. Please note that the light must be protected by a 10 A circuit breaker.

Function

Twilight setting (factory setting: daylight operation at 2000 lux)
The sensor's response threshold can be infinitely varied from 2 – 2000 lux.
Control dial set to ☀ = daylight operation at approx. 2000 lux.
Control dial set to ☁ = night-time operation at approx. 2 lux.
To adjust the detection zone in daylight, the control dial must be set to ☀ (daylight operation).

Time setting (factory setting: 8 sec.)
Light ON time can be adjusted continuously from 8 sec. to 35 min.
Control dial set to shortest time (8 sec.)
Control dial set to longest time (35 min.)
When setting the detection zone, it is recommended to select the shortest time.

Adjusting the detection zone
Using adhesive shrouds, for example, to mask out paths or neighbouring premises
Reach can be adjusted as required to between 2 and 10 m by tilting the lens 90°.

Troubleshooting (Fault / Cause <= Remedy)
No power: Fault faulty not switched ON <= new bulb, turn power switch ON, check lead with voltage tester. Will not switch ON / Surroundings still too bright <= will still response threshold is reached or adjust setting / Bulb faulty <= change bulb / Power switch OFF <= switch ON / Detection zone not properly targeted <= rotate. Will not switch OFF / Permanent movement in the detection zone <= adjust detection zone. Switches ON when unwanted / Detecting cars on the road, for example <= change detection zone, tilt sensor down. Reach changing / Entering ambient temperature <= at low temperatures, shorten reach by tilting sensor down, at high temperatures, tilt sensor up.

Functional warranty
This STEINEL product has been manufactured with utmost care, tested for proper operation and safety in line with applicable regulations and then subjected to random sample inspection. STEINEL guarantees that it is in perfect condition and proper working order. The warranty period is 36 months and starts on the date of sale to the consumer. We will remedy defects caused by material flaws or manufacturing faults. The warranty will be met by repair or replacement of defective parts at our own discretion. The warranty shall not cover damage to third parties, damage or defects caused by improper treatment or maintenance. Further consequential damage to other objects is excluded. Claims under the warranty shall only be accepted if the product is sent fully assembled and well packed complete with a brief description of the fault, a receipt or invoice (date of purchase and dealer's stamp) to the appropriate Service Centre.

Service:
Our Customer Service Department will repair faults not covered by warranty or after the warranty period. Please send the product well packed to your nearest Service Centre.



Tip! 5 min.
min.

3