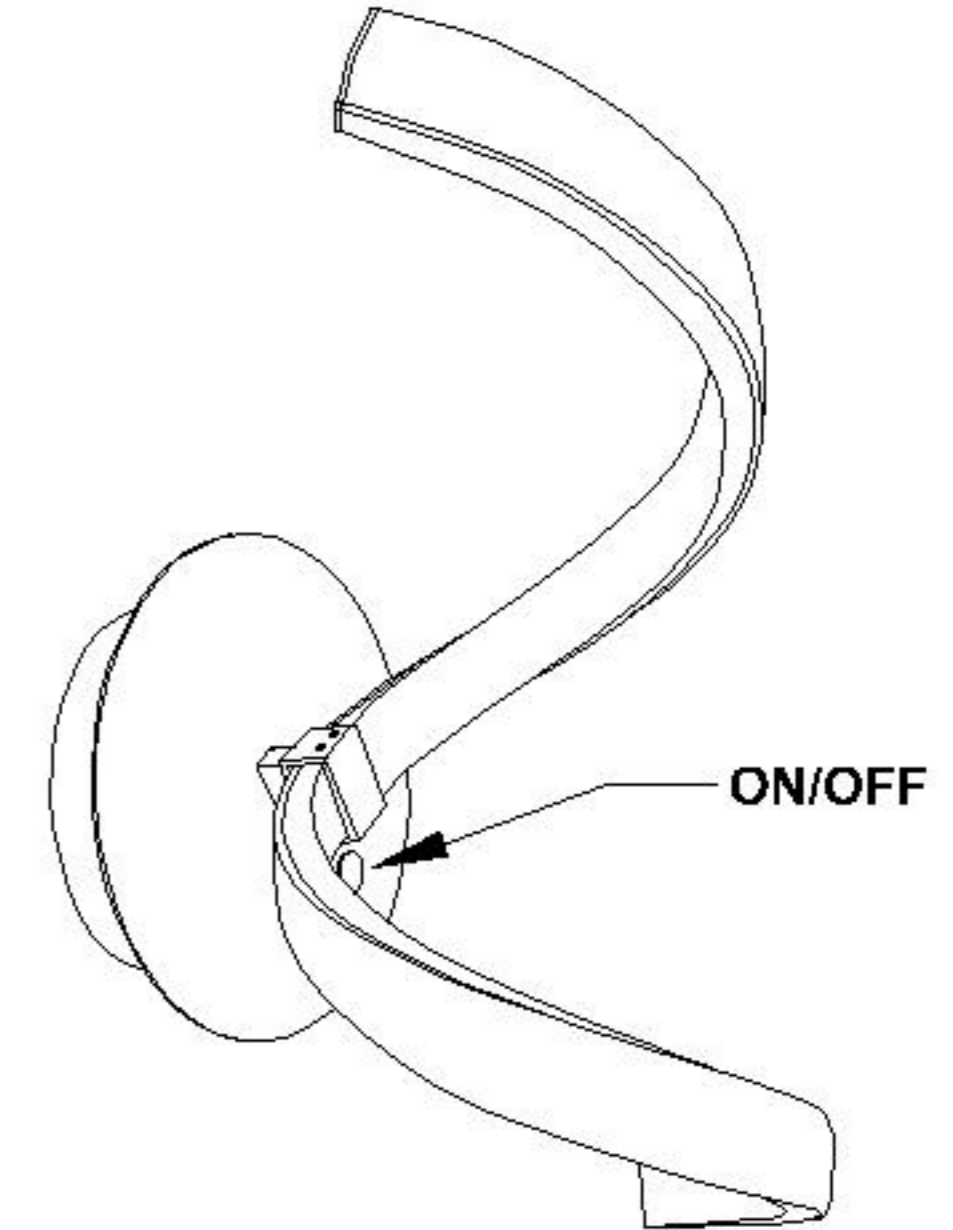
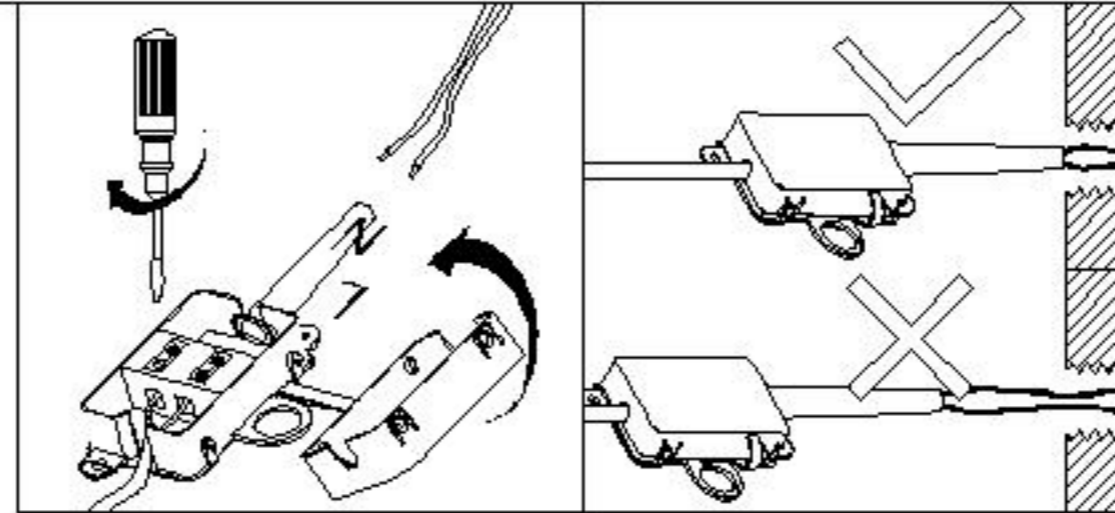
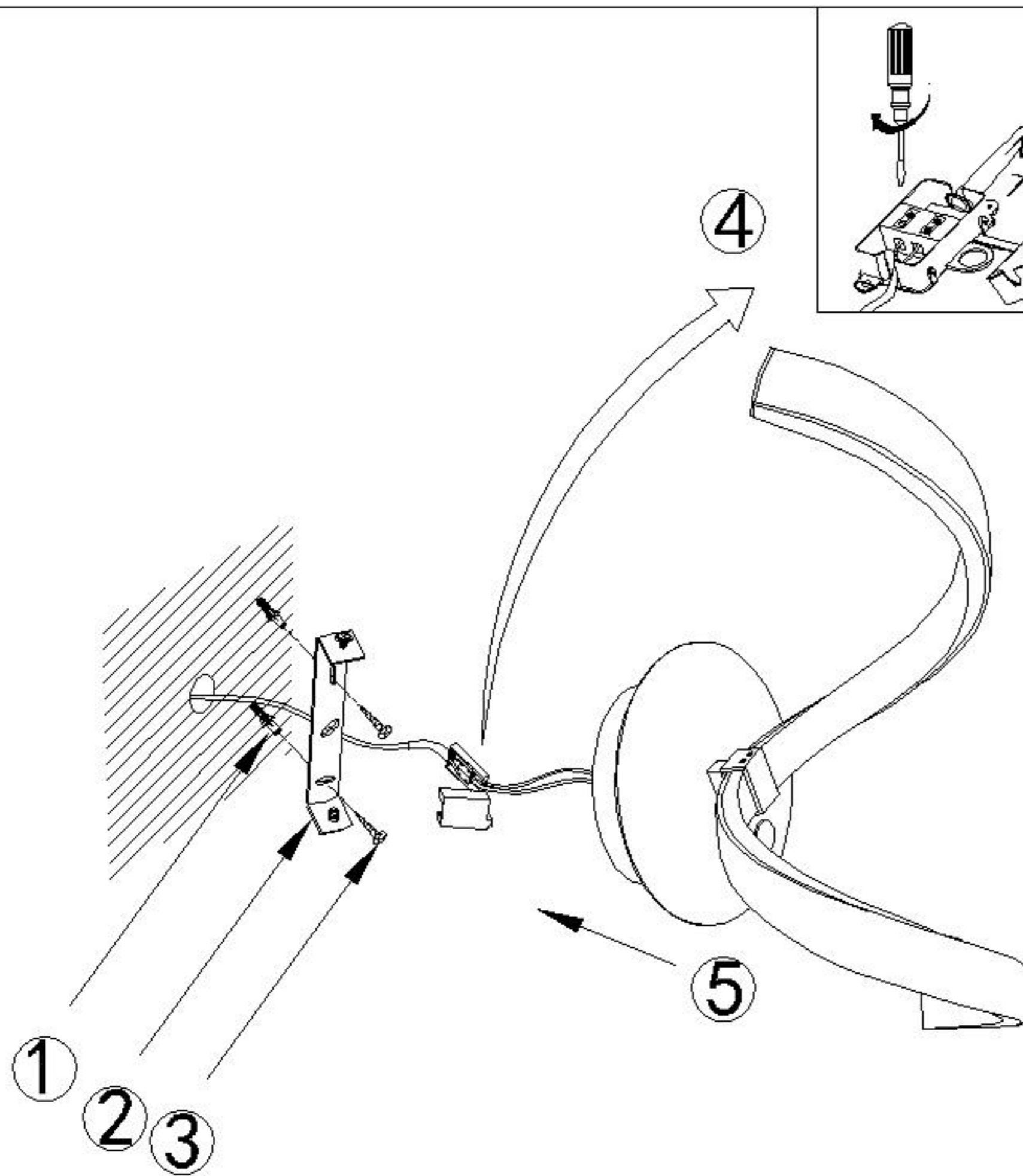


# Assembly Instructions / Instrucciones De Montaje



**LED 10W / INCL**  
**220-240V~ 50/60Hz**

**NOTE:**

- 1: This lighting is only for indoor use.
- 2: Do not switch on before assembling.
- 3: Do not manipulate the shape of the lamp

**NOTA:**

- 1: Esta lámpara solo podrá utilizarse en interior.
- 2: No enchufe la lámpara antes de montarla.
- 3: No manipular forma de la lámpara.

**REF:**  
**5830/5000/6005**

**mAntra**