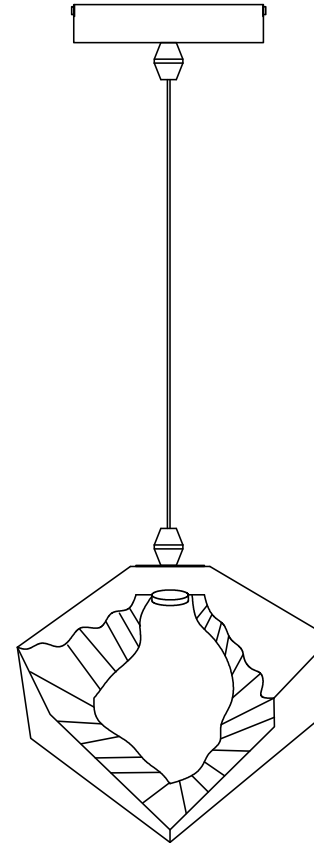
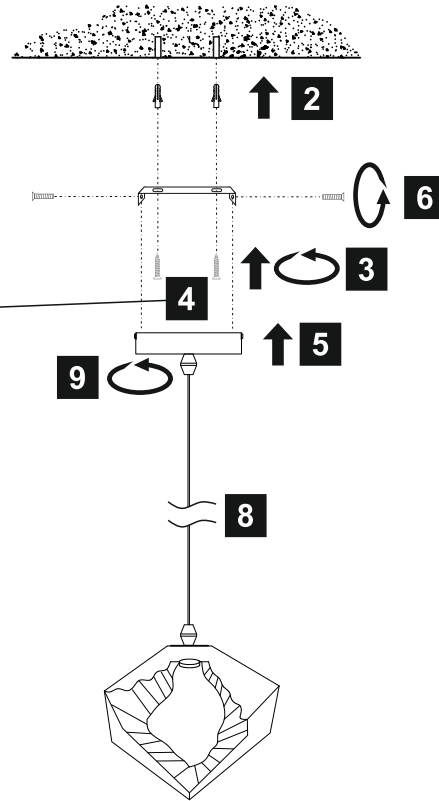
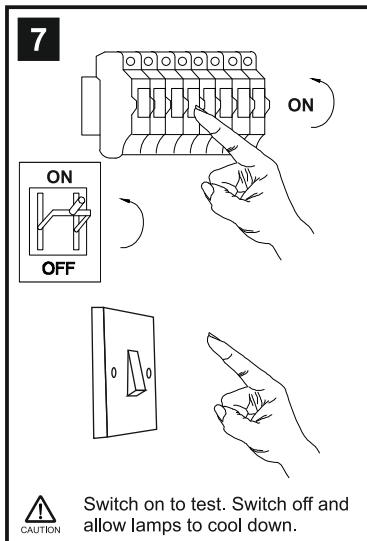
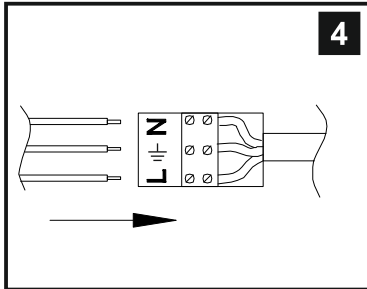
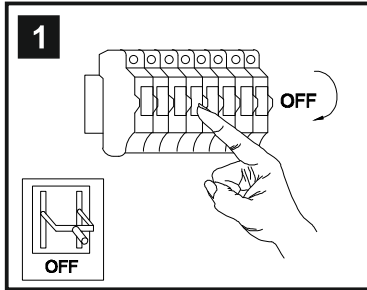


INSTALLATION INSTRUCTIONS

(ILLUSTRATIONS ARE FOR GUIDANCE PURPOSES ONLY.
ACTUAL PRODUCT MAY DIFFER FROM THE IMAGES SHOWN)



- (1) Prior to installation carefully unpack and check all the components and accessories are as per details enclosed.
- (2) These instructions should be used in conjunction with the installation guidelines included.

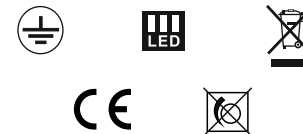


Installation Pack

White Gloves	2 Pcs	
Installation Instructions	1 Page	
Installation Guidelines	2 Pages	
Fixing Screw and Plug	2 Sets	

Contents Checked By	
---------------------	--

Voltage: 230V - 50/60Hz
Lampholder: LED
Lamps: 1 x 3W Max



Salvio IL80067 / IL80068

diyás®