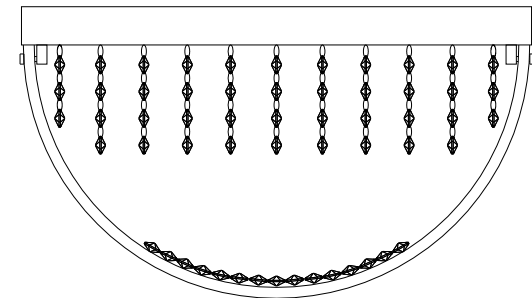
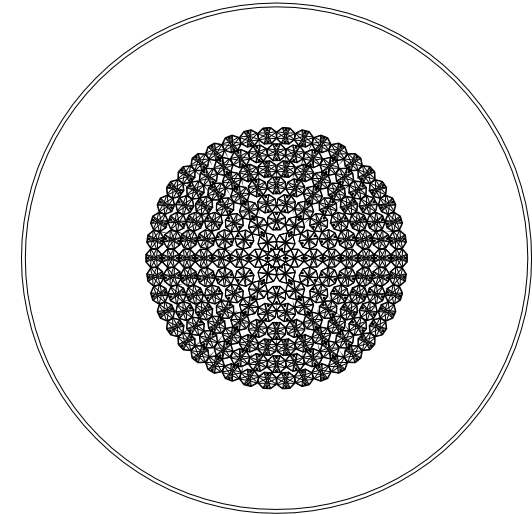
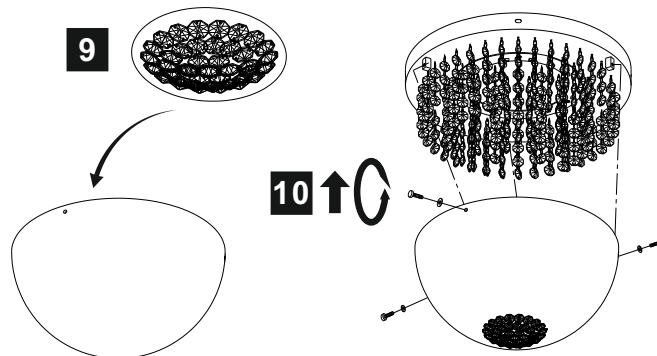
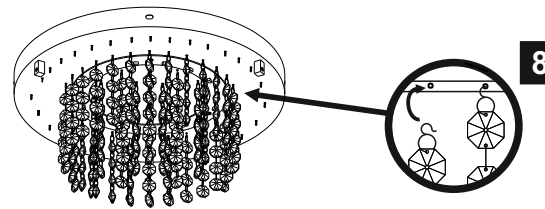
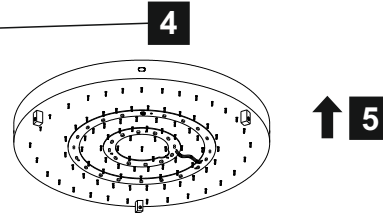
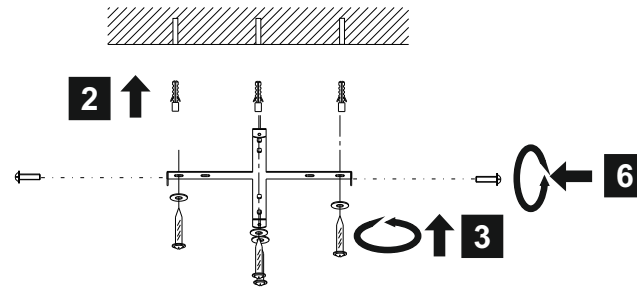
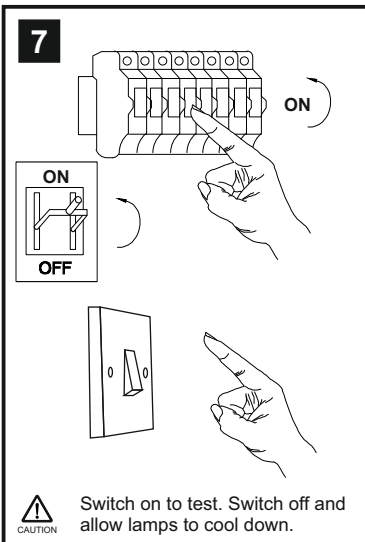
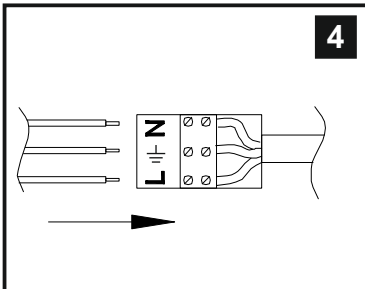
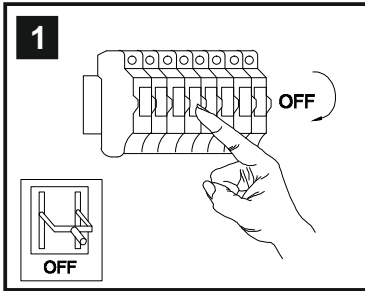


INSTALLATION INSTRUCTIONS

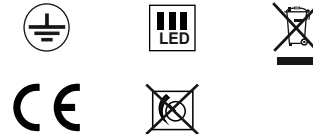
(ILLUSTRATIONS ARE FOR GUIDANCE PURPOSES ONLY.
ACTUAL PRODUCT MAY DIFFER FROM THE IMAGES SHOWN)



- (1) Prior to installation carefully unpack and check all the components and accessories are as per details enclosed.
- (2) These instructions should be used in conjunction with the installation guidelines included.



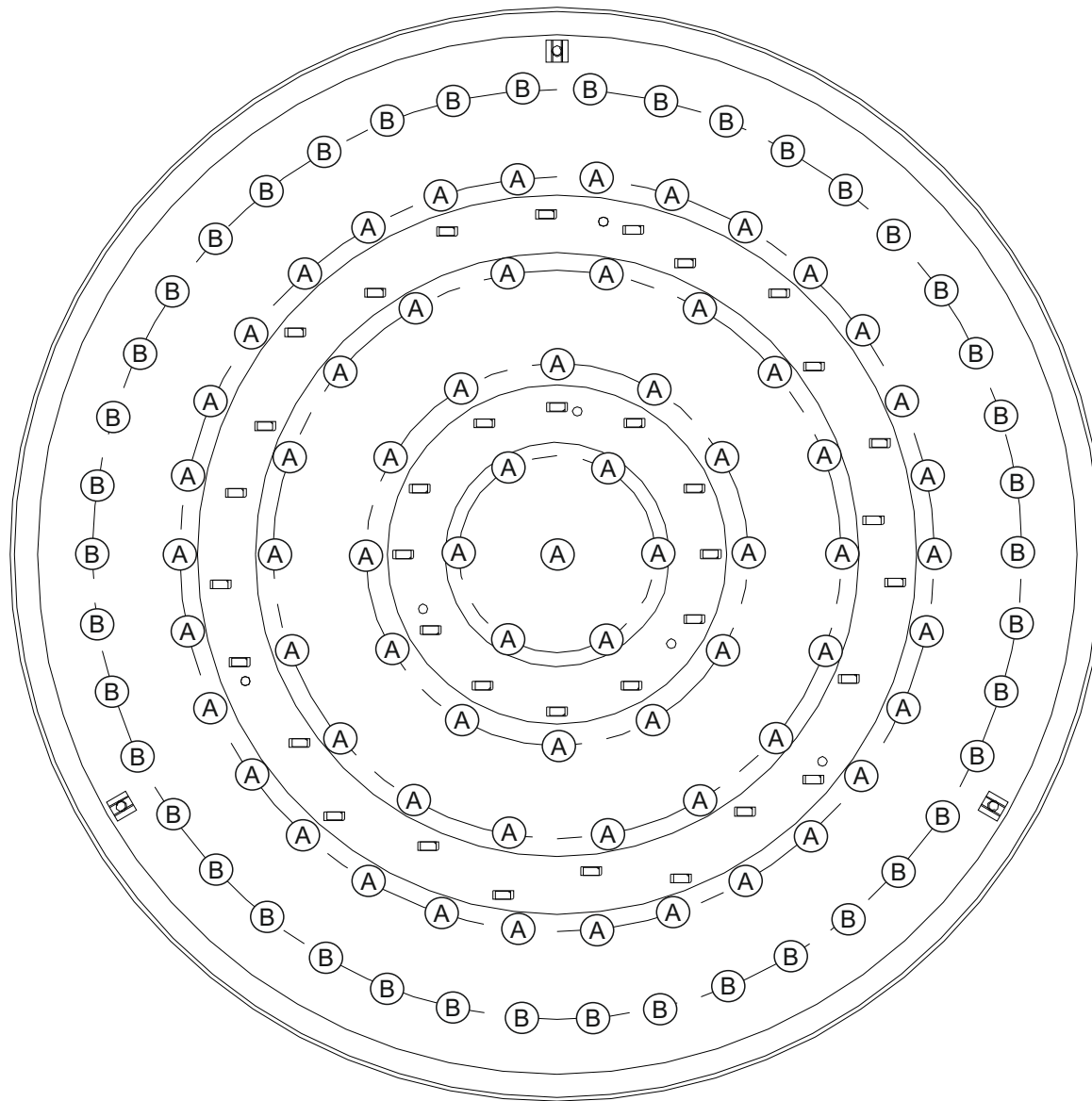
Voltage: 100 ~ 230V - 50/60Hz
Lampholder: LED
Lamps: 42 x 0.5W Max



Harper IL80013

diyas®

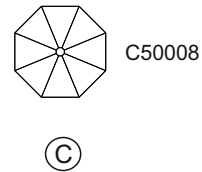
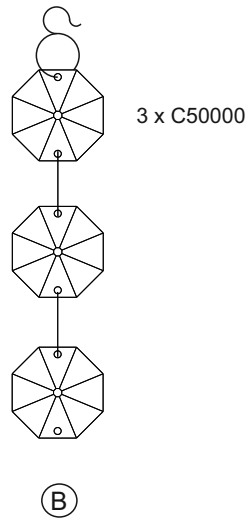
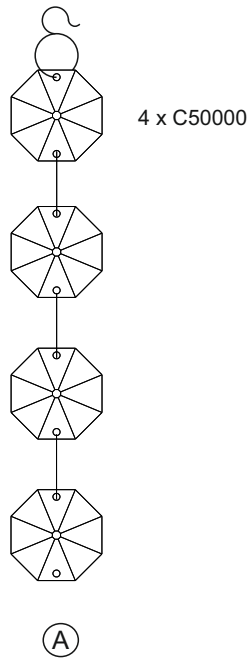
CRYSTAL INSTALLATION INSTRUCTIONS



Harper IL80013

diyas[®]

LIST OF COMPONENTS



Crystal Accessories

Crystal Strand A	67 Pcs	
Crystal Strand B	42 Pcs	
Crystal C	106 Pcs	

Installation Pack

White Gloves	2 Pcs	
Installation Instructions	3 Pages	
Installation Guidelines	2 Pages	
Fixing Screw and Plugs	4 Sets	
Additional Crystal Links	3 Pcs Each	
Glass Fixing Screw and Washer	3 Sets	

Contents Checked By

Harper IL80013

