

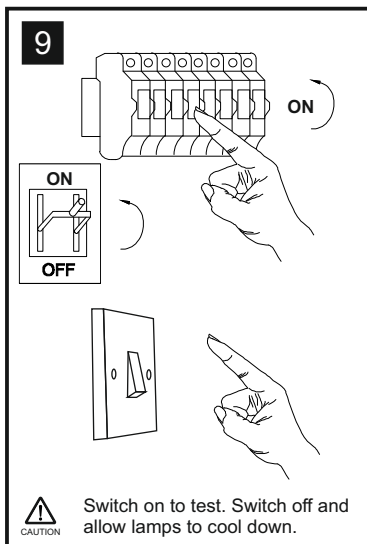
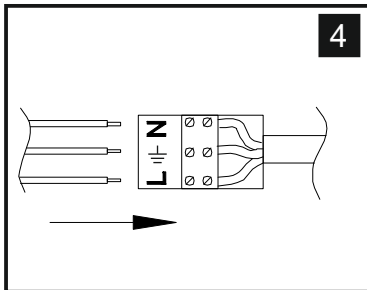
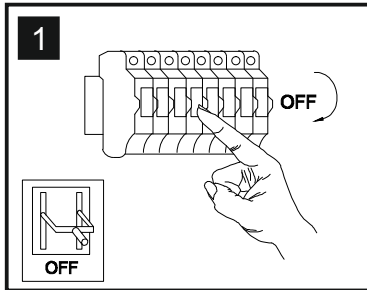
INSTALLATION INSTRUCTIONS

(ILLUSTRATIONS ARE FOR GUIDANCE PURPOSES ONLY.
ACTUAL PRODUCT MAY DIFFER FROM THE IMAGES SHOWN)

⚠️ INSTALLATION NOTES

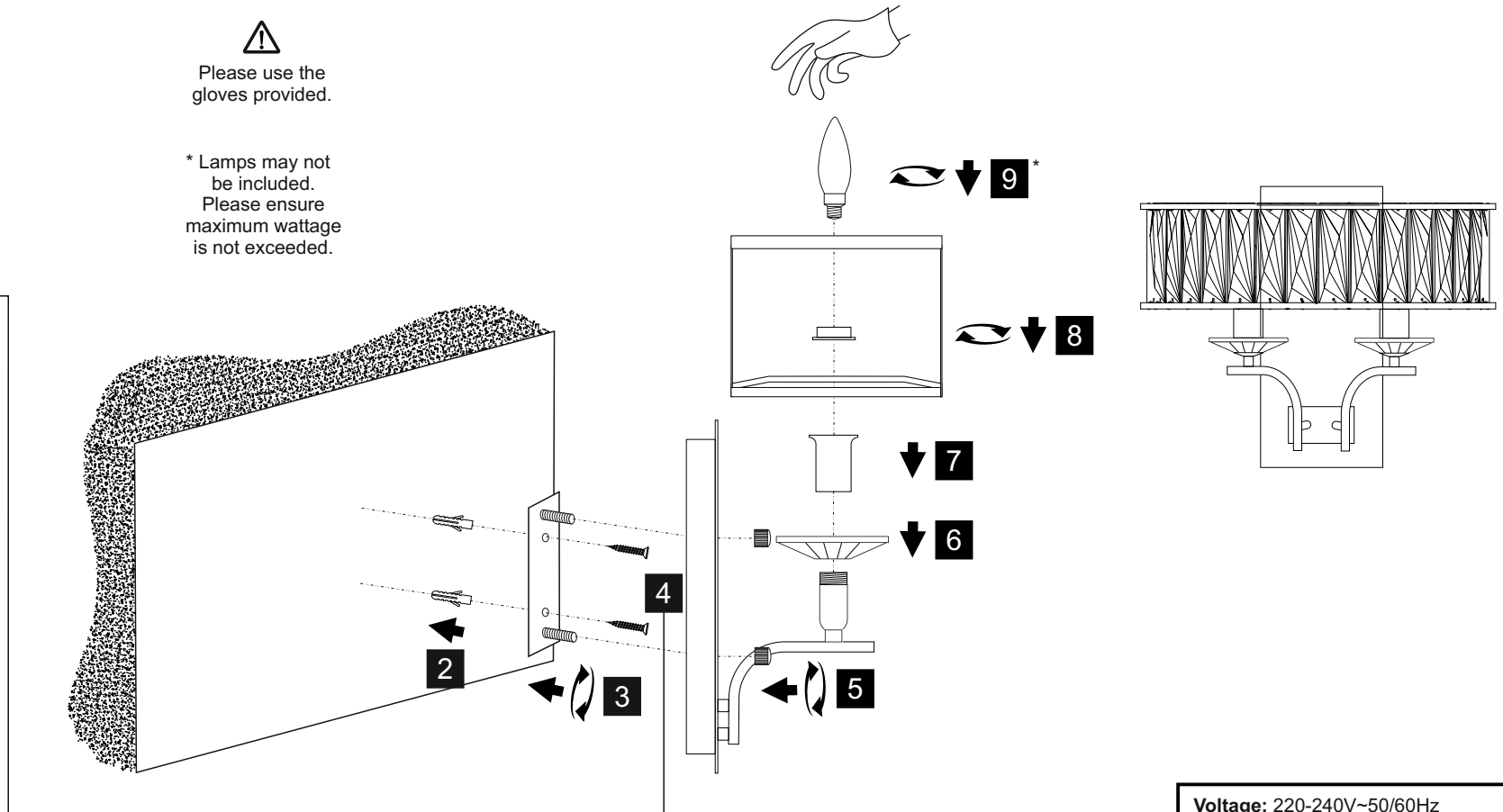
(1) Prior to installation carefully unpack and check all the components and accessories are as per details enclosed.

(2) These instructions should be used in conjunction with the installation guidelines included.



⚠️
Please use the gloves provided.

* Lamps may not be included.
Please ensure maximum wattage is not exceeded.



Voltage: 220-240V~50/60Hz
Lampholder: SES/E14
Lamps: 2 x LED 20W Max



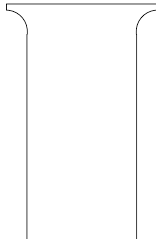
WITH SUITABLE
LAMP/DIMMER



LIST OF COMPONENTS



a



b

Installation Accessories		
Crystal Sconce a	2 Pcs	
Lampholder Sleeve b	2 Pcs	

Installation Pack		
Installation Instructions	2 Pages	
Installation Guidelines	2 Pages	
Fixing Screws & Plugs	2 Sets	
White Gloves	1 Pair	

Contents Checked by	
----------------------------	--