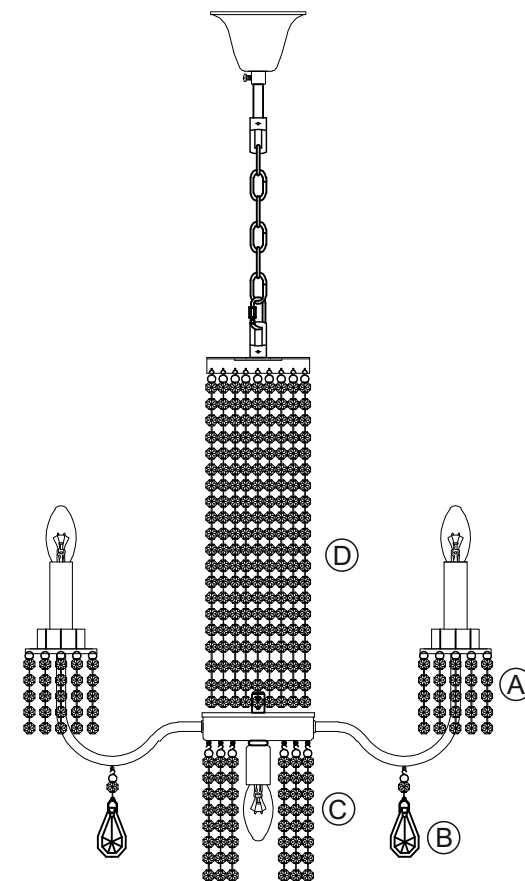
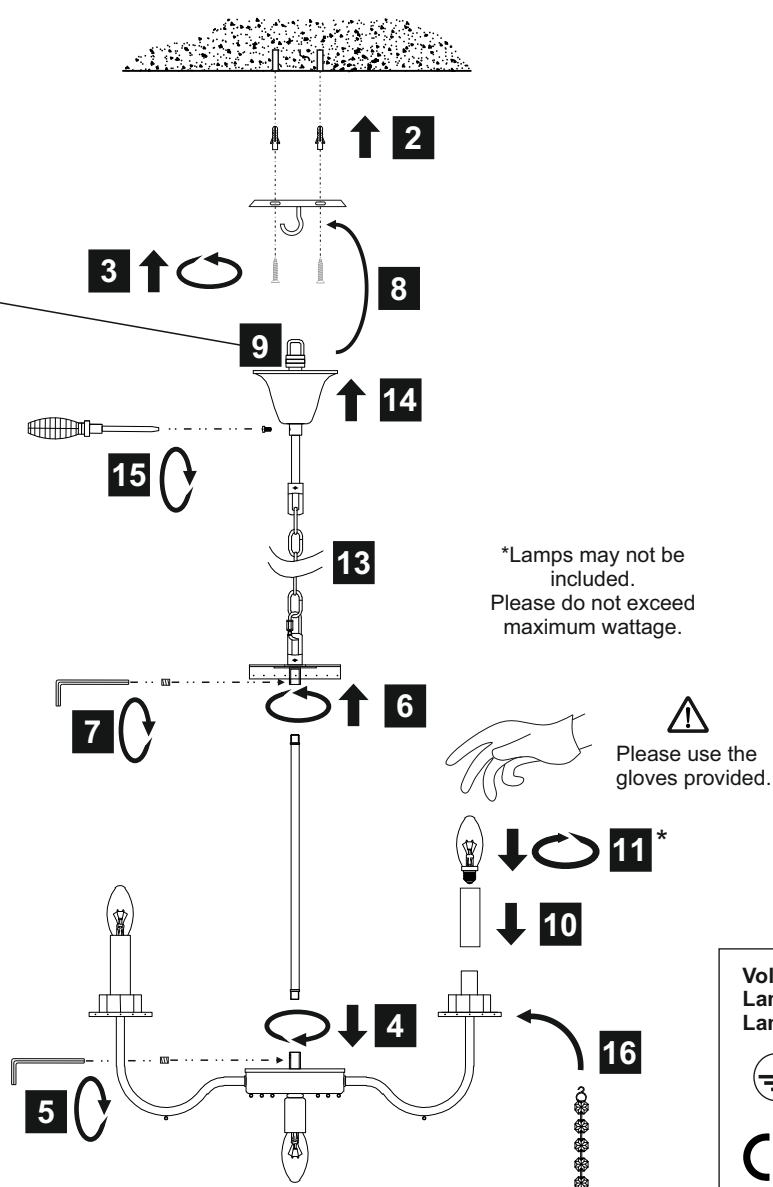
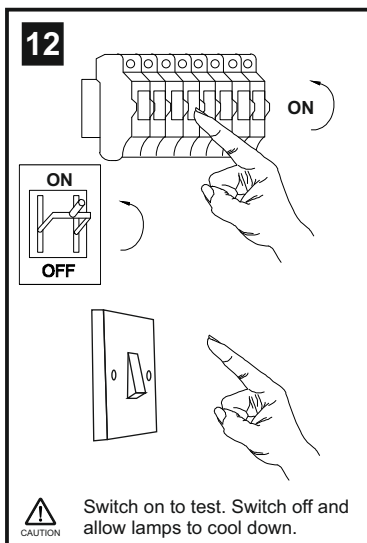
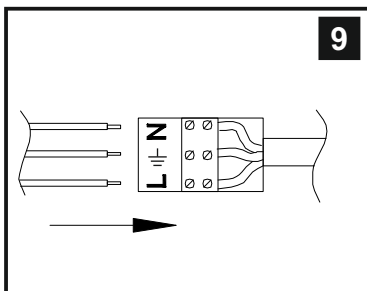
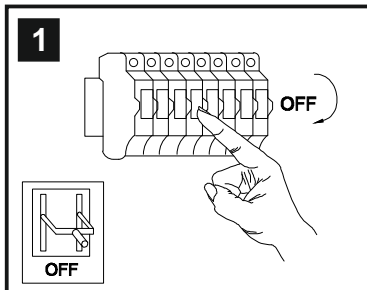


INSTALLATION INSTRUCTIONS

(ILLUSTRATIONS ARE FOR GUIDANCE PURPOSES ONLY.
ACTUAL PRODUCT MAY DIFFER FROM THE IMAGES SHOWN)



- (1) Prior to installation carefully unpack and check all the components and accessories are as per details enclosed.
- (2) These instructions should be used in conjunction with the installation guidelines included.



Voltage: 230V - 50/60Hz
Lampholder: E14/SES
Lamps: 7 x 60W Max



COMPATIBLE



WITH SUITABLE
LAMP/DIMMER

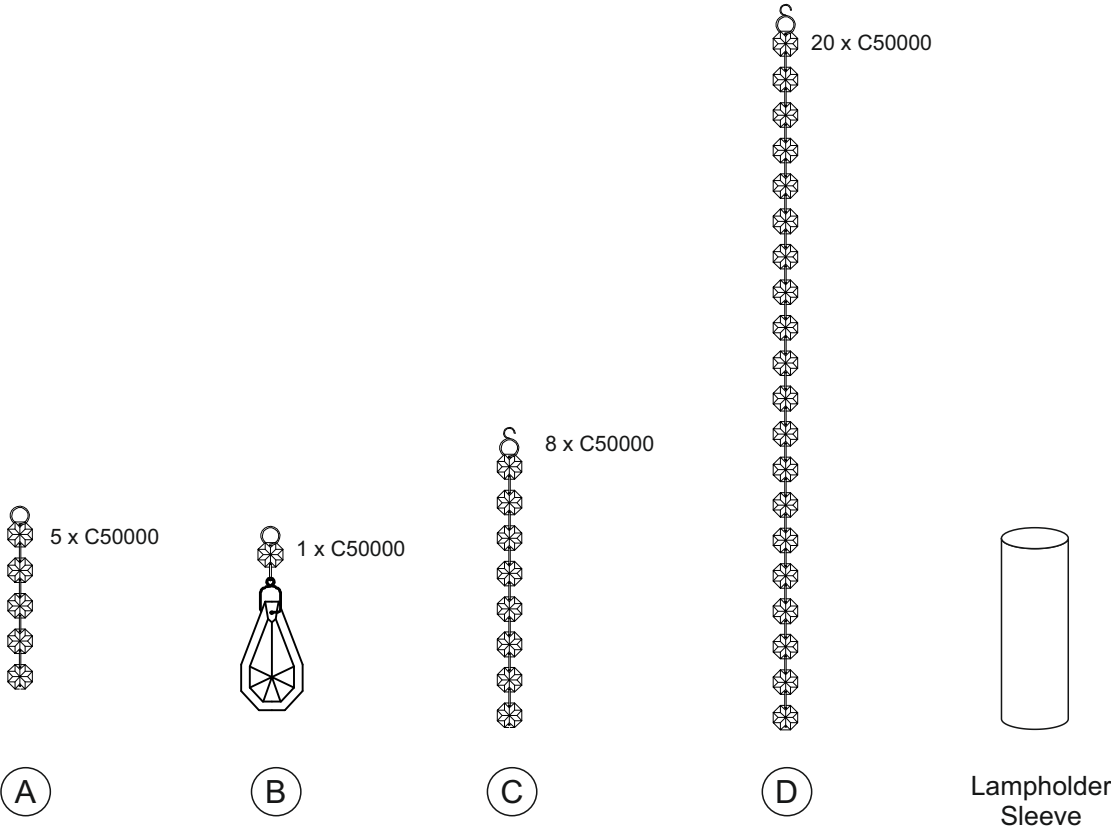


SES/E14

Emily IL31543

diyās®

LIST OF COMPONENTS



Crystal Accessories

| | | |
|--------------------------------|--------|--|
| Crystal Strand A | 60 Pcs | |
| Crystal Strand B | 6 Pcs | |
| Crystal Strand C | 30 Pcs | |
| Crystal Strand D | 30 Pcs | |
| Lampholder Sleeve 85mm x Ø29mm | 6 Pcs | |
| | | |
| | | |
| | | |
| | | |
| | | |

Installation Pack

| | | |
|---------------------------|------------|--|
| White Gloves | 2 Pcs | |
| Installation Instructions | 2 Pages | |
| Installation Guidelines | 2 Pages | |
| Fixing Screw and Plug | 2 Sets | |
| Allen Key | 1 Pc | |
| Grub Screw | 2 Pcs | |
| Additional Crystal Links | 3 Pcs Each | |

Contents Checked By

Emily IL31543

diy^{as}