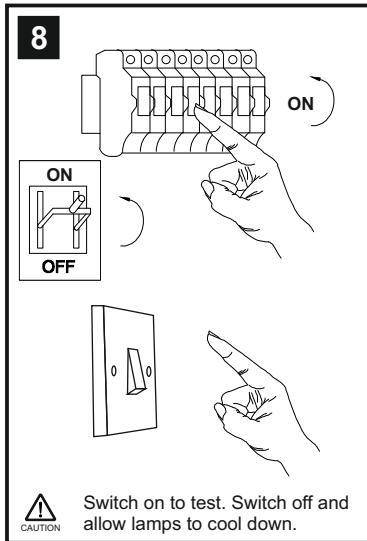
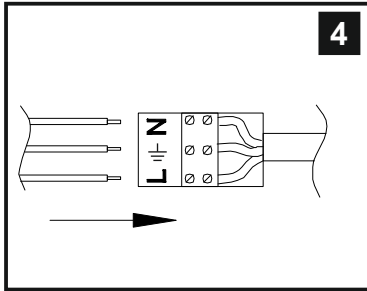
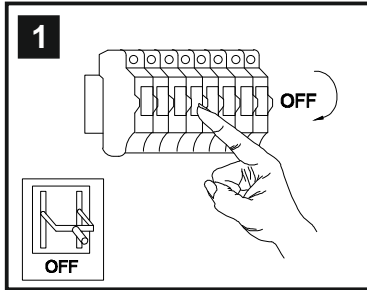


INSTALLATION INSTRUCTIONS

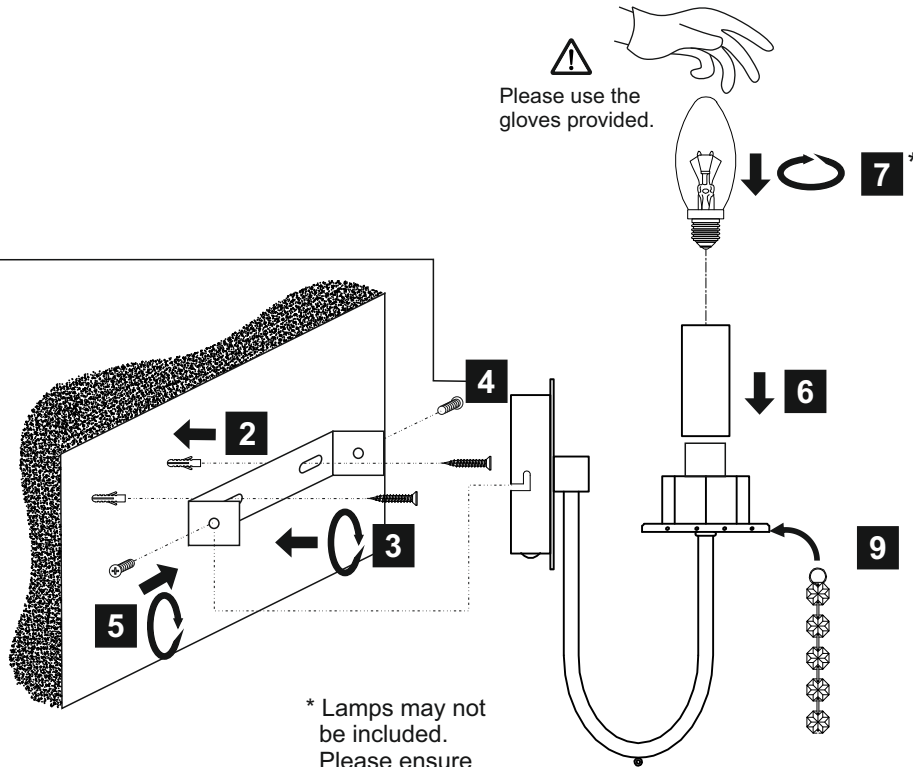
(ILLUSTRATIONS ARE FOR GUIDANCE PURPOSES ONLY.
ACTUAL PRODUCT MAY DIFFER FROM THE IMAGES SHOWN)



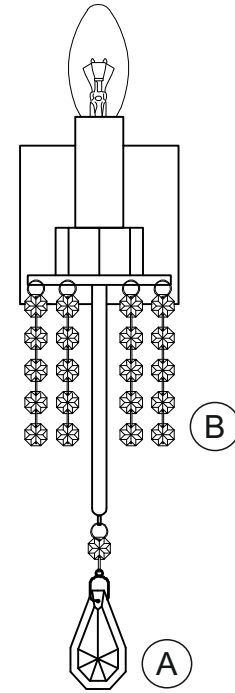
- (1) Prior to installation carefully unpack and check all the components and accessories are as per details enclosed.
- (2) These instructions should be used in conjunction with the installation guidelines included.



Switch on to test. Switch off and allow lamps to cool down.



* Lamps may not be included.
Please ensure maximum wattage is not exceeded.



Voltage: 230V - 50/60Hz
Lampholder: E14/SES
Lamps: 1 x 60W Max

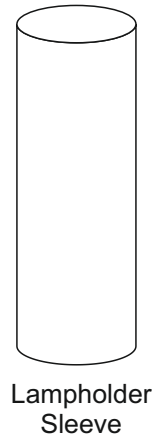
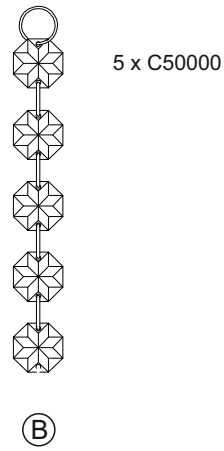
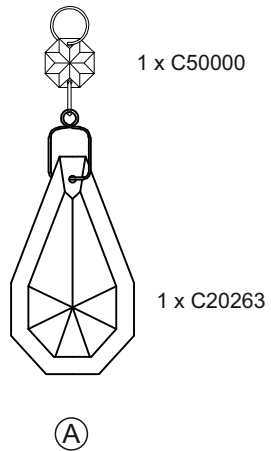


WITH SUITABLE
DIMMER/LAMP
COMPATIBLE

Emily IL31540

diyás®

LIST OF COMPONENTS



Crystal Accessories

Crystal Strand A	1 Pc	
Crystal Strand B	10 Pcs	
Lampholder Sleeve 70mm x Ø29mm	1 Pc	

Installation Pack

White Gloves	2 Pcs	
Installation Instructions	2 Pages	
Installation Guidelines	2 Pages	
Fixing Screw & Plug	2 Sets	
Additional Crystal Links	3 Pcs Each	

Contents Checked By

Emily IL31540

diyās®