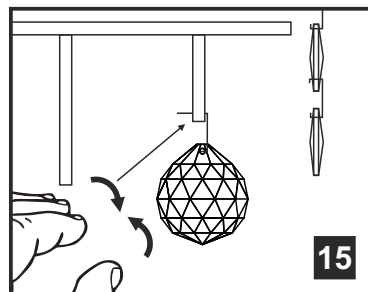
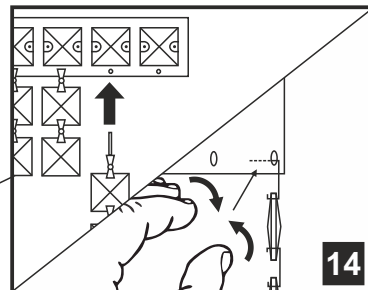
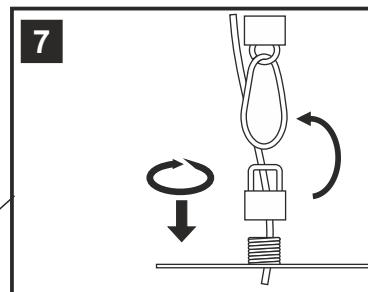
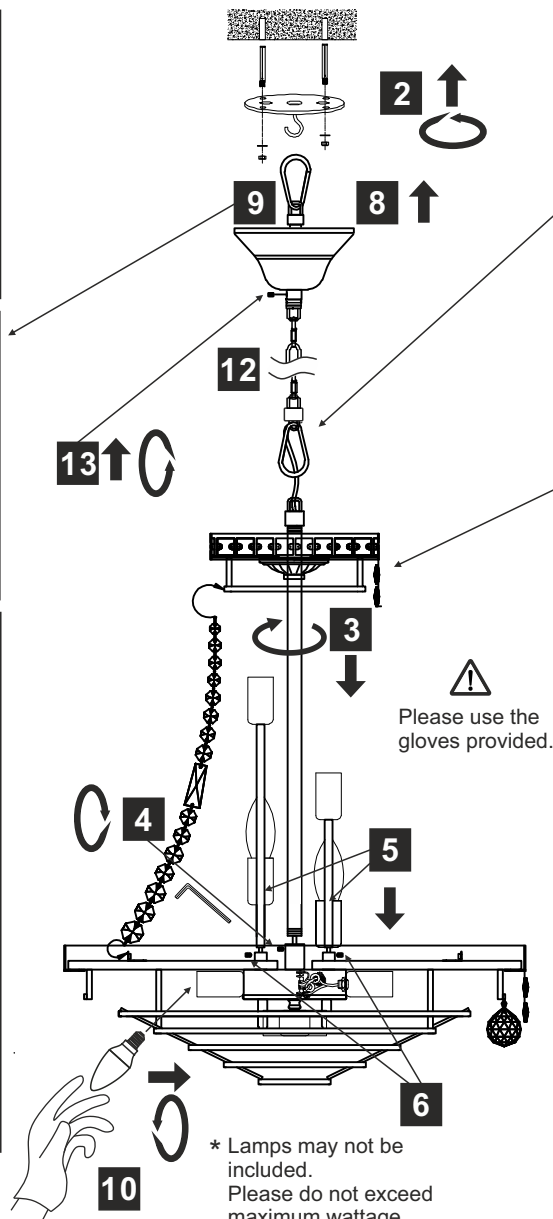
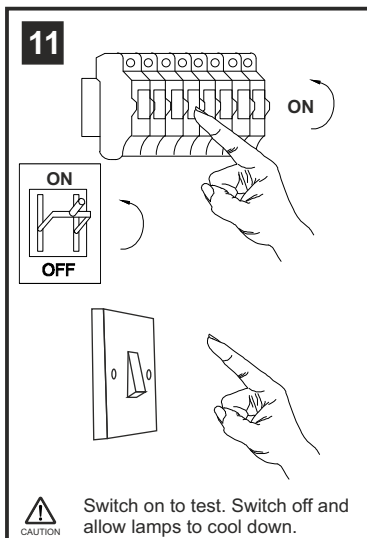
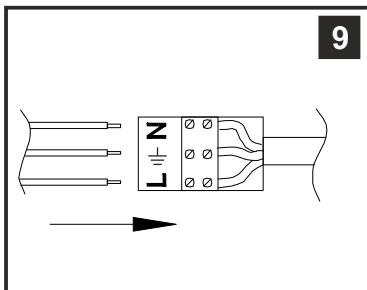
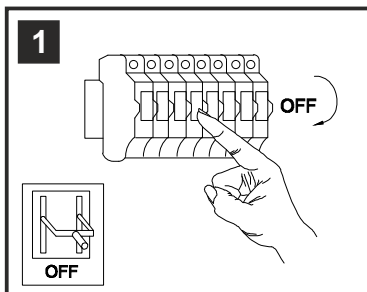


INSTALLATION INSTRUCTIONS

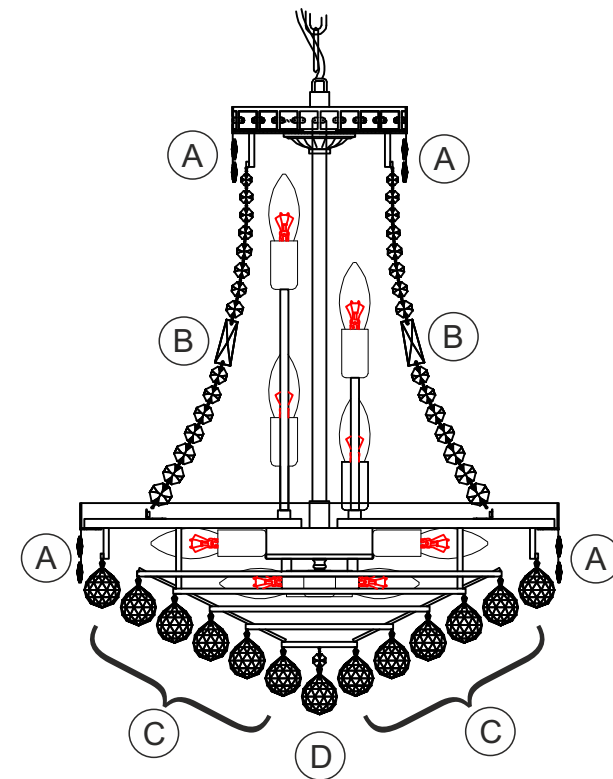


- (1) Prior to installation carefully unpack and check all the components and accessories are as per details enclosed.
- (2) These instructions should be used in conjunction with the installation guidelines included.



! Please use the gloves provided.

* Lamps may not be included.
Please do not exceed maximum wattage.



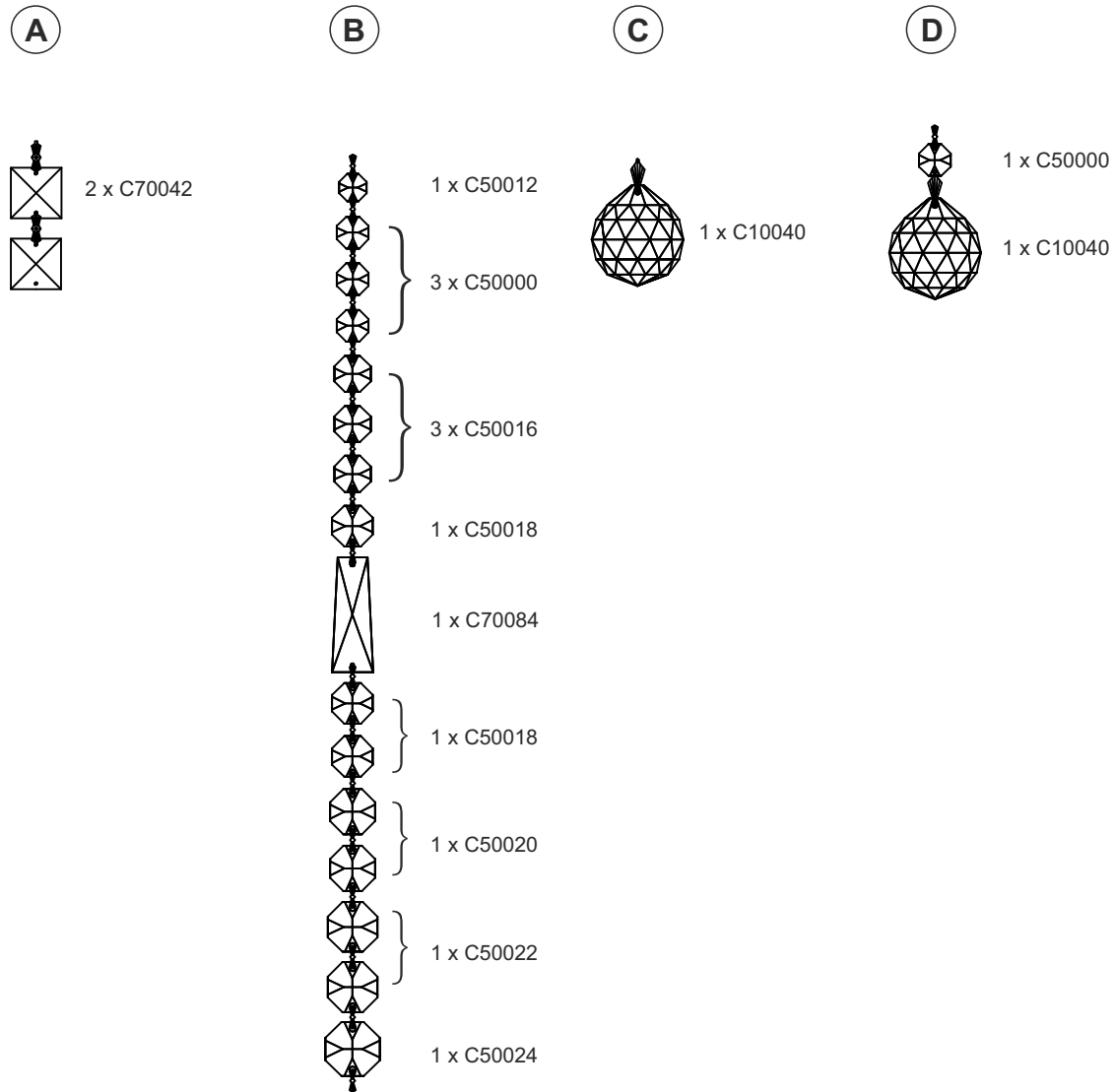
Voltage: 230V - 50/60Hz
Lampholder: E14/SES
Lamps: 14 x 60W Max



Frances IL31420 / IL32090

diyas®

LIST OF COMPONENTS



Crystal Accessories

Crystal Strand A	91 Pcs	
Crystal Strand B	35 Pcs	
Crystal Strand C	126 Pcs	
Crystal Strand D	1 Pc	

Installation Pack

White Gloves	2 Pcs	
Installation Instructions	2 Pages	
Installation Guidelines	2 Pages	
Additional Crystal Links	3 Pcs Each	
Heavy Duty Bolts	2 Sets	
Allen Key	1 Pc	

Contents Checked By

Frances IL31420 / IL32090

