

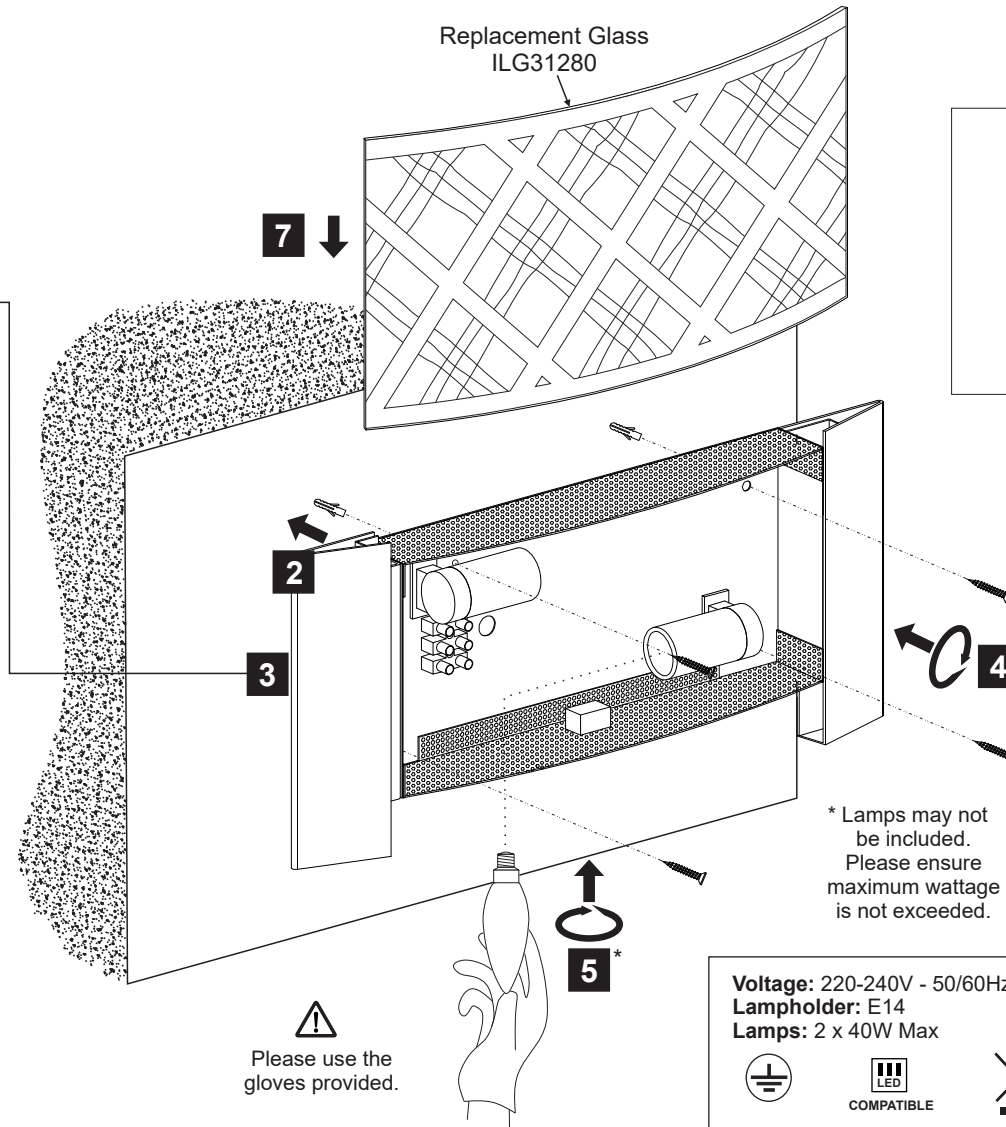
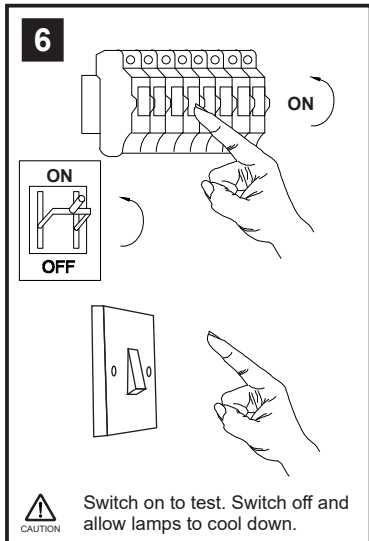
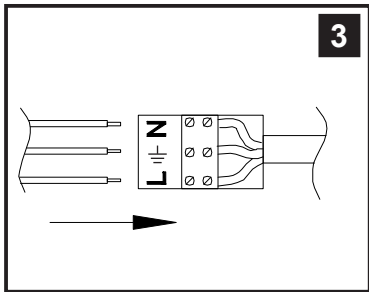
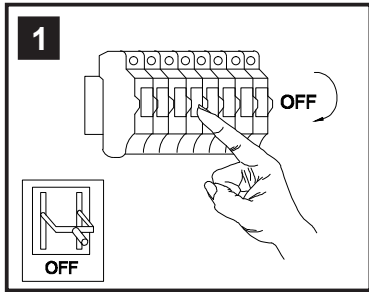
INSTALLATION INSTRUCTIONS

(ILLUSTRATIONS ARE FOR GUIDANCE PURPOSES ONLY.
ACTUAL PRODUCT MAY DIFFER FROM THE IMAGES SHOWN)

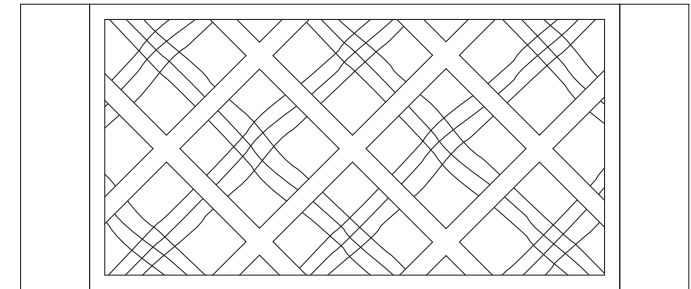
⚠️ INSTALLATION NOTES

(1) Prior to installation carefully unpack and check all the components and accessories are as per details enclosed.

(2) These instructions should be used in conjunction with the installation guidelines included.



Replacement Glass
ILG31280



* Lamps may not be included. Please ensure maximum wattage is not exceeded.

⚠️ Please use the gloves provided.

Voltage: 220-240V - 50/60Hz
Lampholder: E14
Lamps: 2 x 40W Max



LED
COMPATIBLE



WITH SUITABLE
LAMP/DIMMER



SES/E14

Installation Pack

White Gloves	2 Pcs	
Installation Instructions	1 Page	
Installation Guidelines	2 Pages	
Fixing Screw & Plug	4 Sets	

Contents
Checked By

Aries IL31280

diyas®