

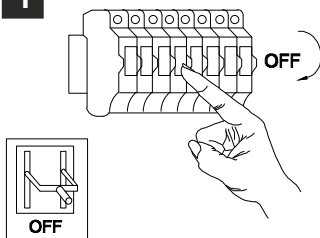
# INSTALLATION INSTRUCTIONS

(ILLUSTRATIONS ARE FOR GUIDANCE PURPOSES ONLY.  
ACTUAL PRODUCT MAY DIFFER FROM THE IMAGES SHOWN)



- (1) Prior to installation carefully unpack and check all the components and accessories are as per details enclosed.
- (2) These instructions should be used in conjunction with the installation guidelines included.

1



\* Lamps may not be included.  
Please ensure maximum wattage is not exceeded.



Please use the gloves provided.



\* 8 ↓



7 ↓



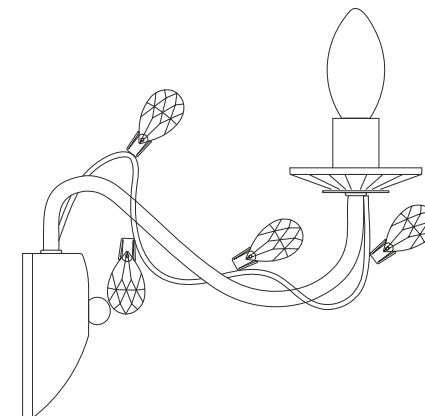
6 ↓



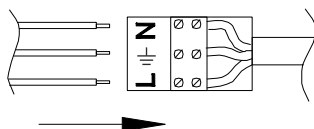
C80003



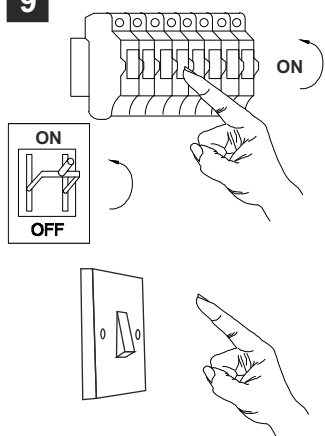
60mm x 28mm



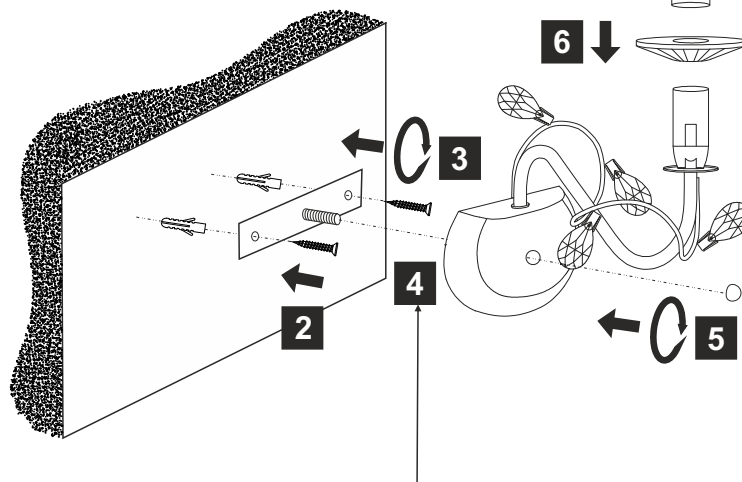
4



9



Switch on to test. Switch off and allow lamps to cool down.



## Accessories

Lampholder Sleeve	1 Pcs	
Crystal Sconce	1 Pcs	

## Installation Pack

White Gloves	2 Pcs	
Installation Instructions	1 Pages	
Installation Guidelines	2 Pages	
Spare Crystal & Pin	2 Pcs	
Fixing Screw & Plug	2 Pcs	

Willow IL31211 / IL31221

Voltage: 230V - 50/60Hz  
Lampholder: E14/SES  
Lamps: 1 x 40W Max



WITH SUITABLE  
DIMMER/LAMP

