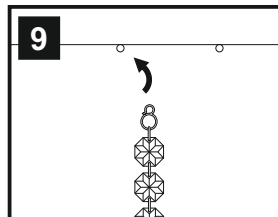
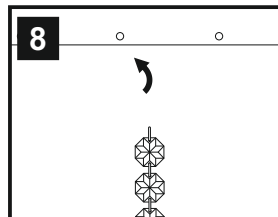
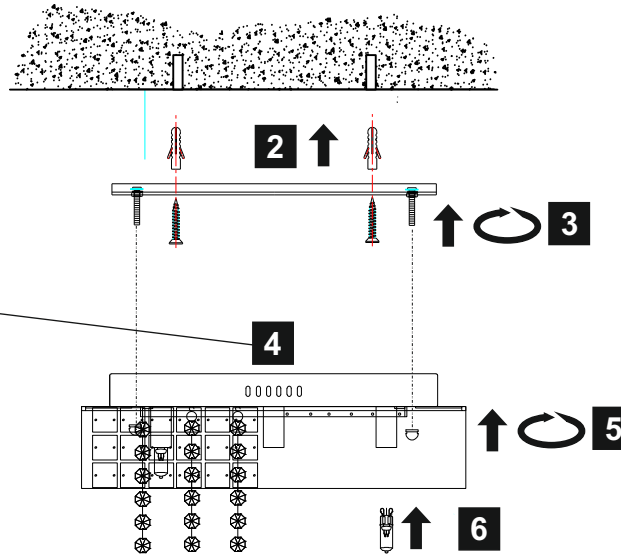
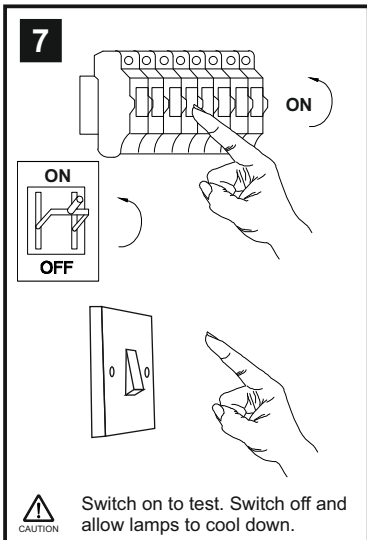
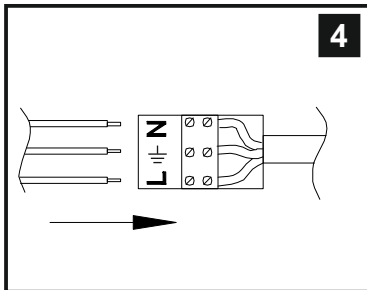
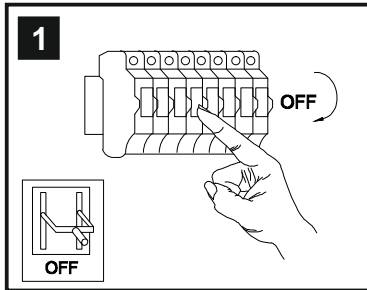


INSTALLATION INSTRUCTIONS

(ILLUSTRATIONS ARE FOR GUIDANCE PURPOSES ONLY.
ACTUAL PRODUCT MAY DIFFER FROM THE IMAGES SHOWN)

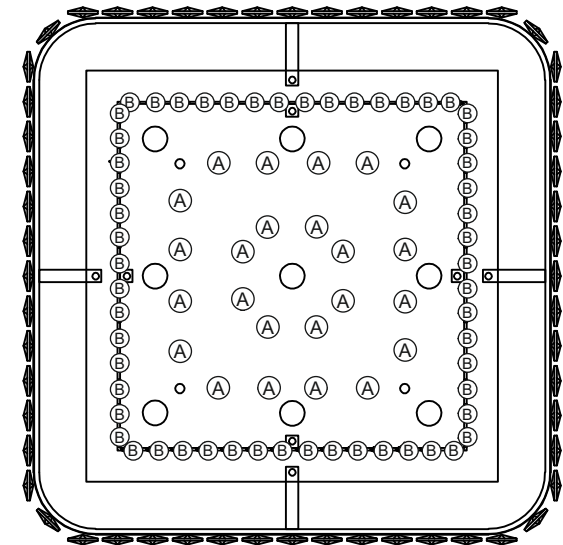
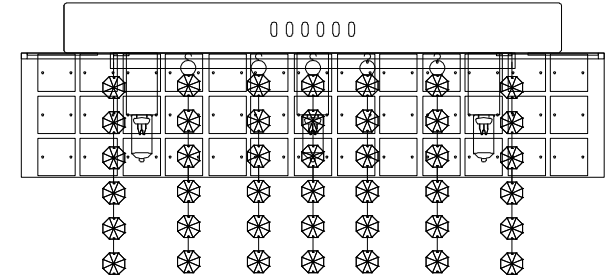


- (1) Prior to installation carefully unpack and check all the components and accessories are as per details enclosed.
- (2) These instructions should be used in conjunction with the installation guidelines included.



Please use the gloves provided.

* Lamps may not be included.
Please ensure maximum wattage is not exceeded.



Voltage: 230V - 50/60Hz
Lampholder: G9
Lamps: 9 x 33W Max



COMPATIBLE



WITH SUITABLE LAMP/DIMMER



WITH SUITABLE LAMP/DIMMER



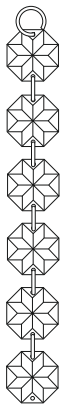
Edison IL31153

diyas®

LIST OF COMPONENTS



A



B

Crystal Accessories

Crystal Strand A	24 Pcs	
Crystal Strand B	56 Pcs	

Installation Pack

White Gloves	2 Pcs	
Installation Instructions	2 Pages	
Installation Guidelines	2 Pages	
Fixing Screw and Plug	4 Sets	

Contents Checked By

Edison IL31153

diyas[®]