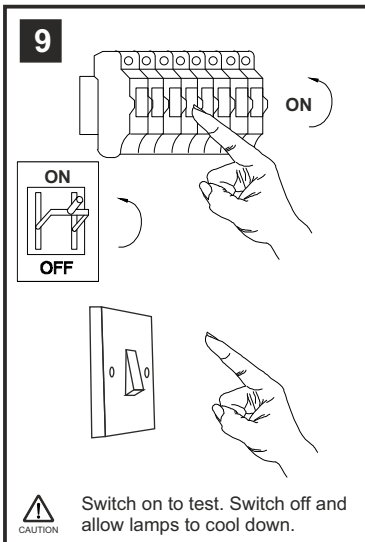
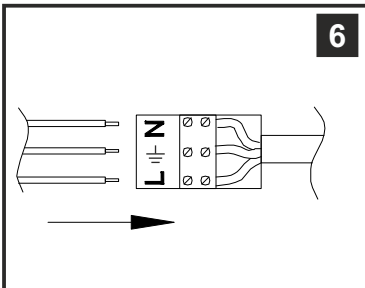
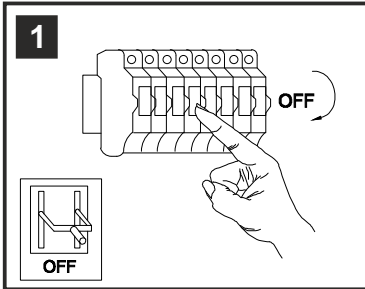


INSTALLATION INSTRUCTIONS

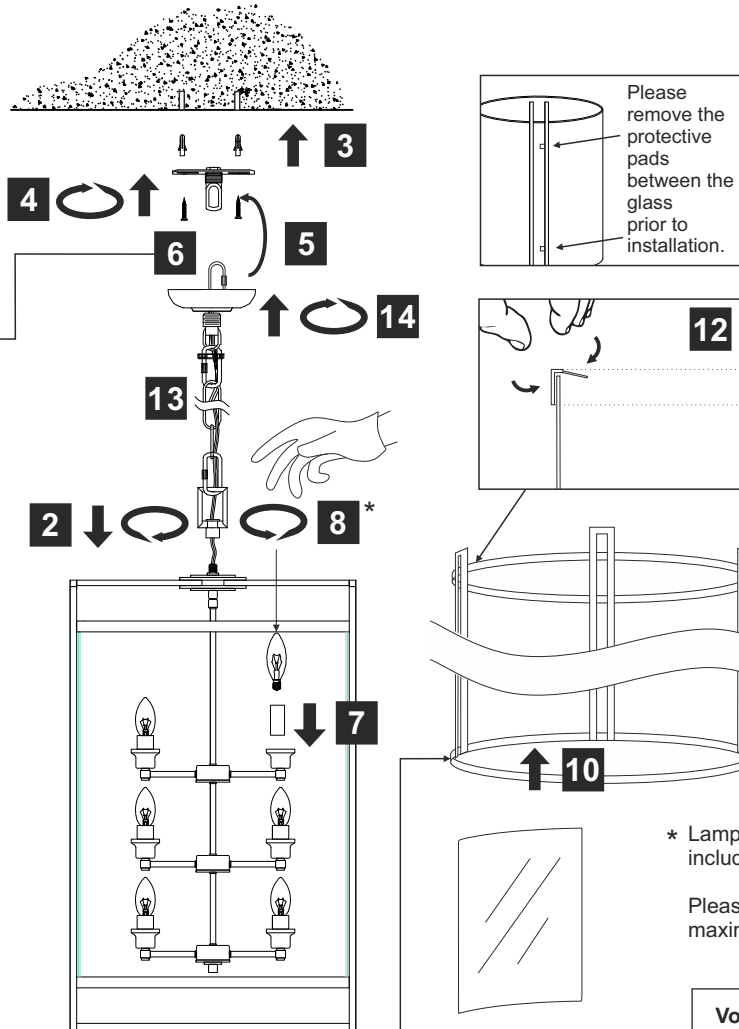
(ILLUSTRATIONS ARE FOR GUIDANCE PURPOSES ONLY.
ACTUAL PRODUCT MAY DIFFER FROM THE IMAGES SHOWN)



- (1) Prior to installation carefully unpack and check all the components and accessories are as per details enclosed.
- (2) These instructions should be used in conjunction with the installation guidelines included.

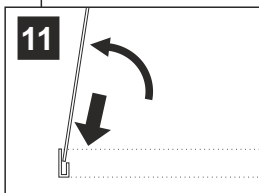
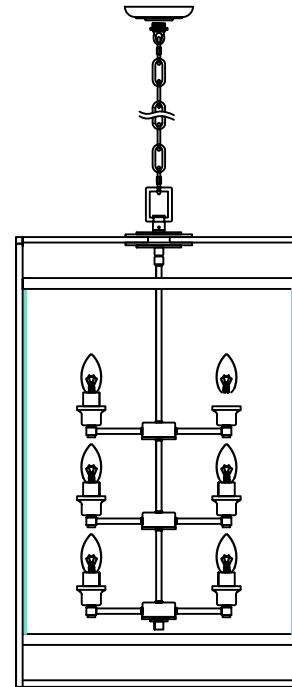


CAUTION Switch on to test. Switch off and allow lamps to cool down.



* Lamps may not be included.

Please do not exceed maximum wattage.



CAUTION Please use the gloves provided.

Voltage: 230V - 50/60Hz
Lampholder: E14/SES
Lamps: 12 x 60W Max



COMPATIBLE



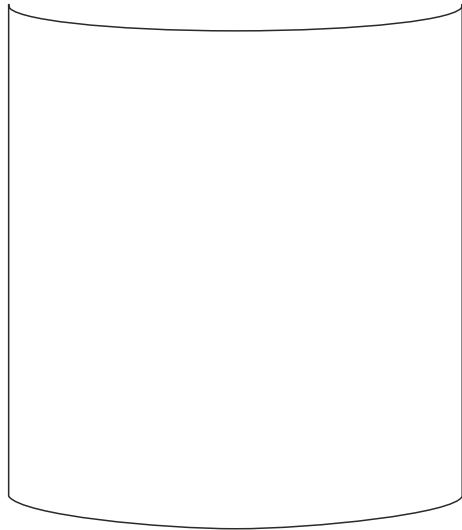
WITH SUITABLE LAMP/DIMMER



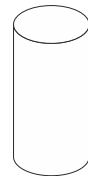
Eaton IL31085 / IL31095

diyas®

LIST OF COMPONENTS



ILG31095



Lampholder Sleeve

Accessories		
Glass Shade	4 Pcs	
Lampholder Sleeve 60mm x 32mm	12 Pcs	

Installation Pack		
White Gloves	2 Pcs	
Installation Instructions	2 Pages	
Installation Guidelines	2 Pages	
Fixing Screw and Plug	2 Sets	

Contents Checked By	
----------------------------	--

Eaton IL31085 / IL31095

