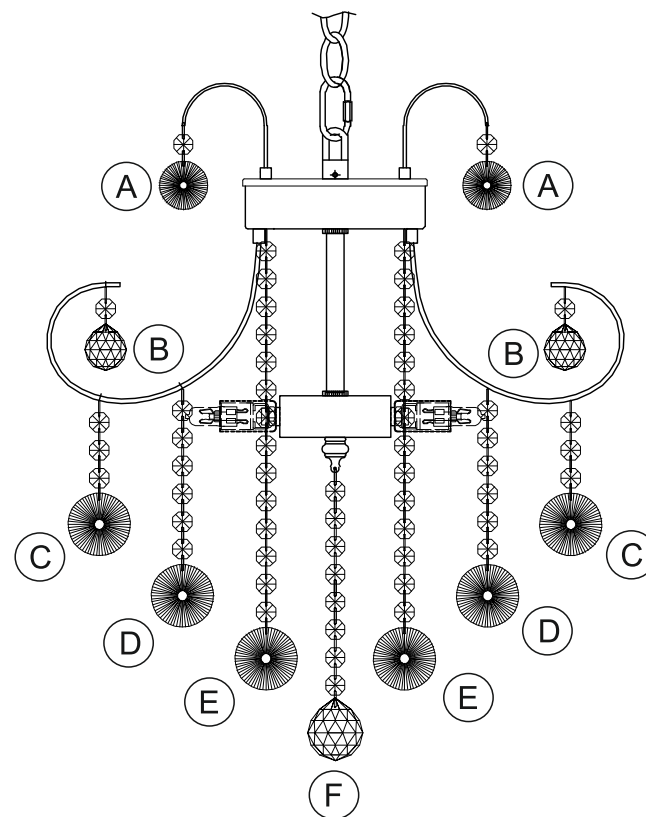
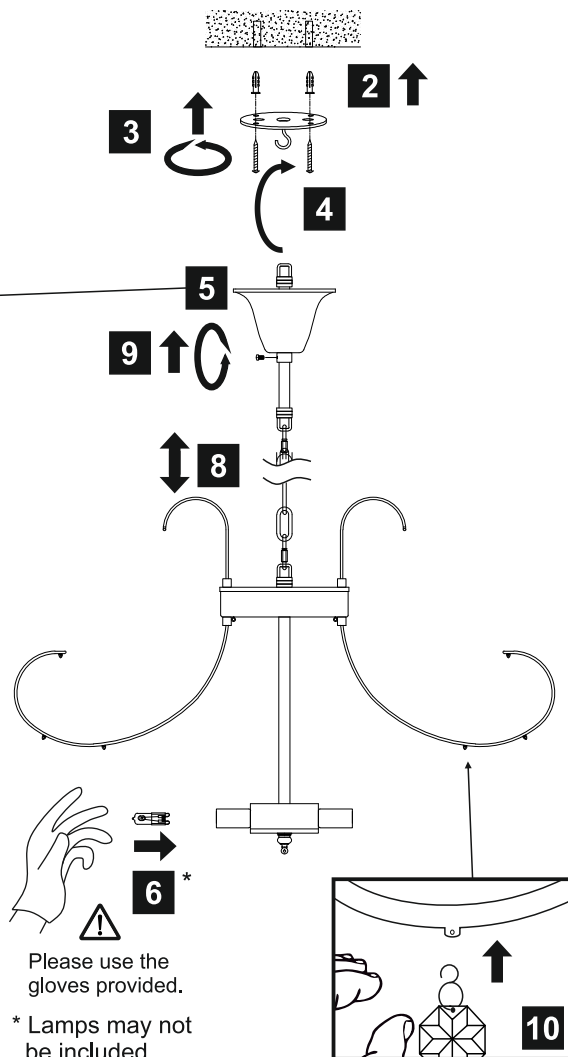
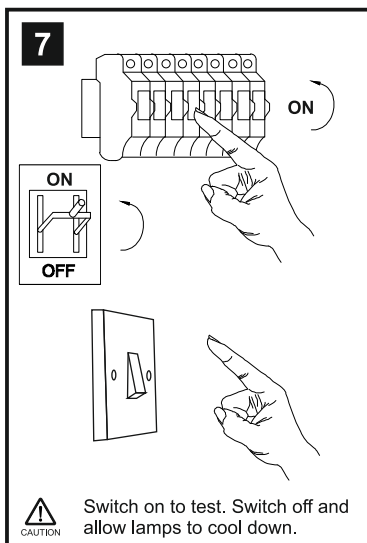
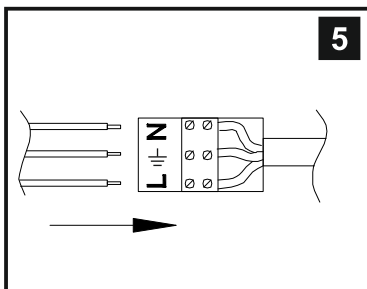
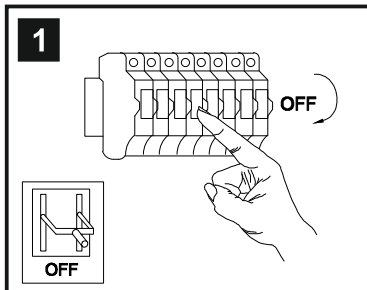


# INSTALLATION INSTRUCTIONS

(ILLUSTRATIONS ARE FOR GUIDANCE PURPOSES ONLY.  
ACTUAL PRODUCT MAY DIFFER FROM THE IMAGES SHOWN)



- (1) Prior to installation carefully unpack and check all the components and accessories are as per details enclosed.
- (2) These instructions should be used in conjunction with the installation guidelines included.



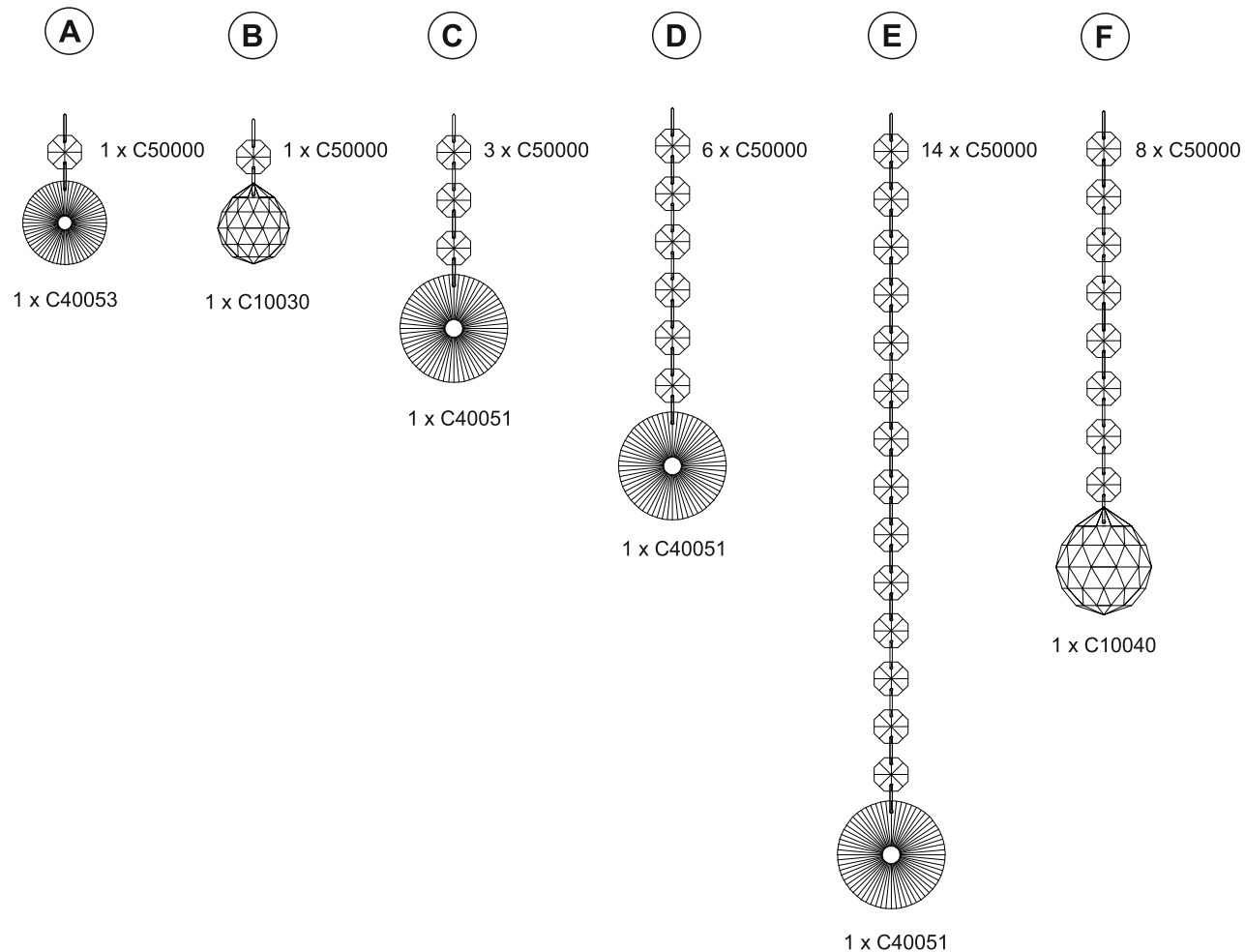
**Voltage:** 230V - 50/60Hz  
**Lampholder:** G9  
**Lamps:** 5 x 33W Max



**Rosina IL31054 / IL32054**

**diyas®**

## LIST OF COMPONENTS



### Crystal Accessories

Crystal Strand A	8 Pcs	
Crystal Strand B	12 Pcs	
Crystal Strand C	12 Pcs	
Crystal Strand D	12 Pcs	
Crystal Strand E	5 Pcs	
Crystal Strand F	1 Pcs	

### Installation Pack

White Gloves	2 Pcs	
Installation Instructions	2 Pages	
Installation Guidelines	2 Pages	
Additional Crystal Links	3 Pcs Each	
Fixing Screw & Plug	2 Sets	

**Contents Checked By**

**Rosina IL31054 / IL32054**

**diyas®**