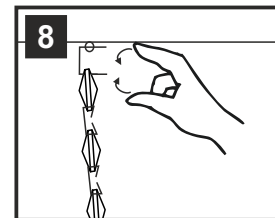
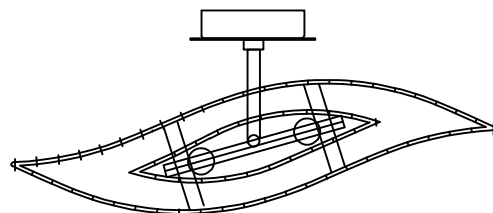
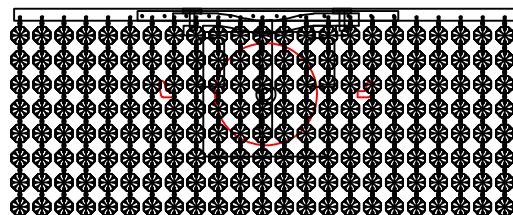
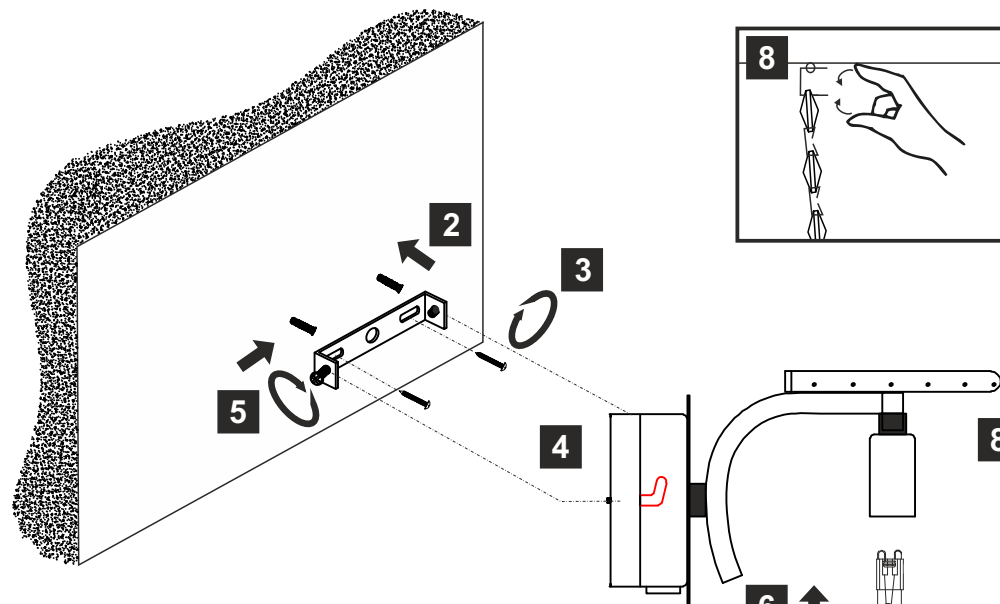
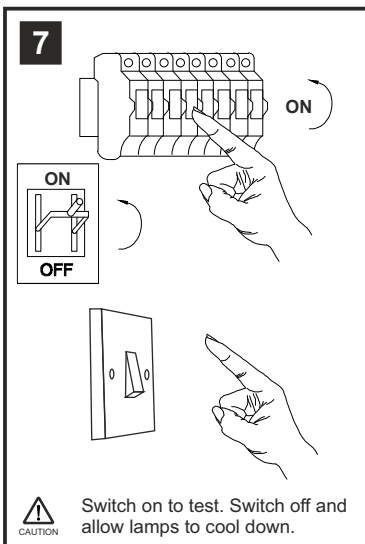
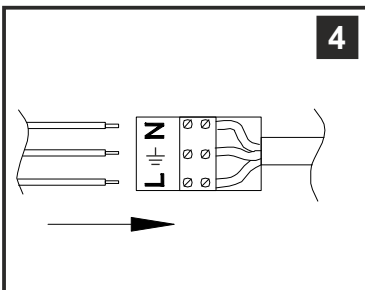
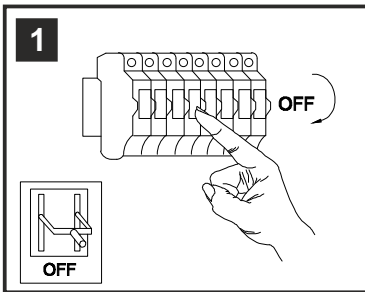


# INSTALLATION INSTRUCTIONS



- (1) Prior to installation carefully unpack and check all the components and accessories are as per details enclosed.
- (2) These instructions should be used in conjunction with the installation guidelines included.



\* Lamps may not be included.  
Please ensure maximum wattage is not exceeded.



Please use the gloves provided.

## Crystal Accessories

Crystal Strand A	68 Pcs	
------------------	--------	--

## Installation Pack

White Gloves	2 Pcs	
Installation Instructions	1 Page	
Installation Guidelines	2 Pages	
Fixing Screws & Plugs	2 Sets	
Additional Crystal Links	3 Pcs Each	



8 X C5000



**Voltage:** 230V - 50/60Hz  
**Lampholder:** G9  
**Lamps:** 2 x 33W Max



COMPATIBLE



WITH SUITABLE DIMMER/LAMP



**Fabio IL30571**

**diyás®**