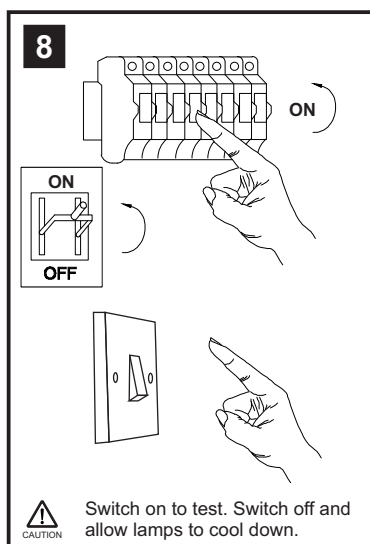
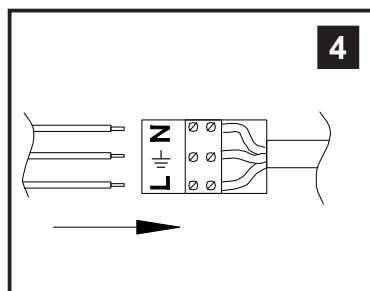
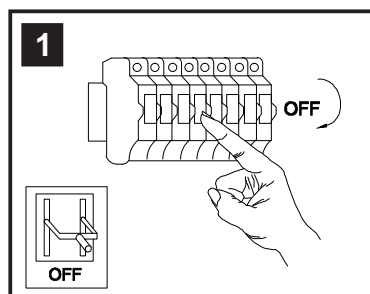


# INSTALLATION INSTRUCTIONS

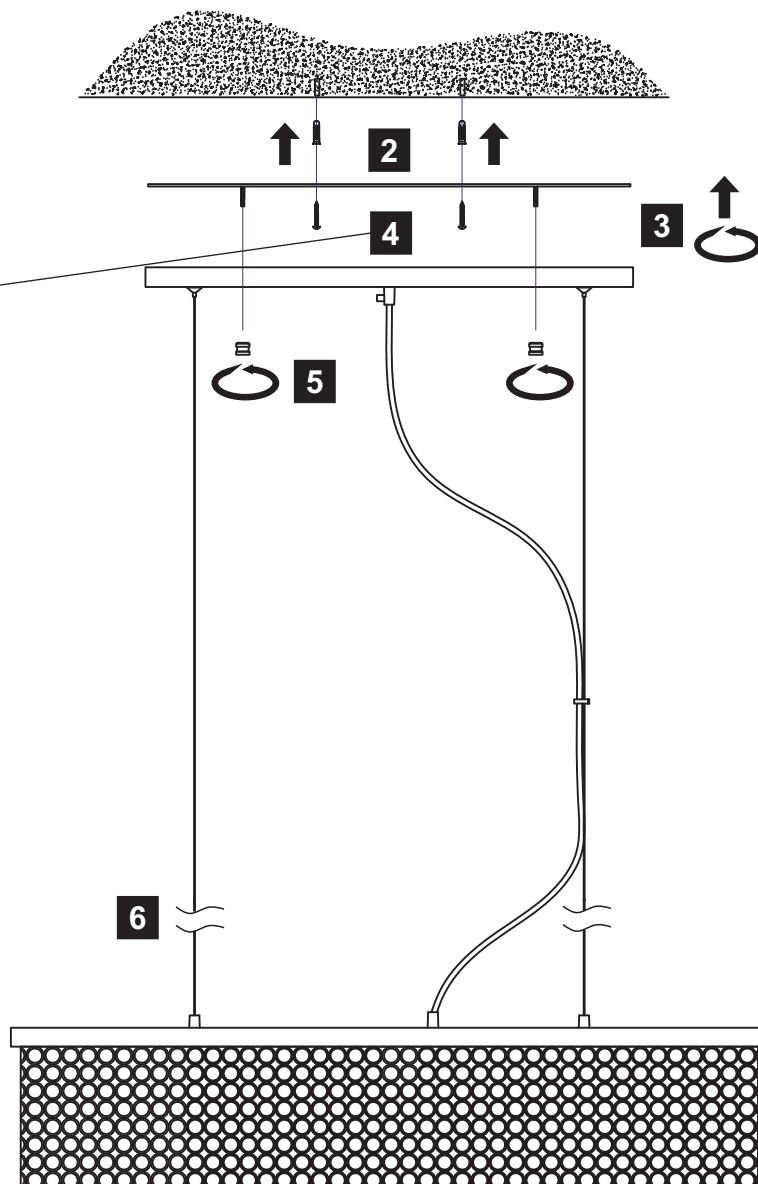
(ILLUSTRATIONS ARE FOR GUIDANCE PURPOSES ONLY. ACTUAL PRODUCT MAY DIFFER FROM THE IMAGES SHOWN)



## Installation Pack

|                           |         |  |
|---------------------------|---------|--|
| White Gloves              | 2 Pcs   |  |
| Installation Instructions | 2 Pages |  |
| Installation Guidelines   | 2 Pages |  |
| Fixing Screws & Plugs     | 2 Sets  |  |
|                           |         |  |
|                           |         |  |
|                           |         |  |

Contents Checked By



\* Lamps may not be included.  
Please ensure maximum wattage is not exceeded.

Please use the gloves provided.



(1) Prior to installation carefully unpack and check all the components and accessories are as per details enclosed.

(2) These instructions should be used in conjunction with the installation guidelines included.

Voltage: 230V - 50/60Hz  
Lampholder: G9  
Lamps: 6 x 33W Max



LED  
COMPATIBLE



WITH SUITABLE  
LAMP/DIMMER



Piazza IL30433

**diyas**