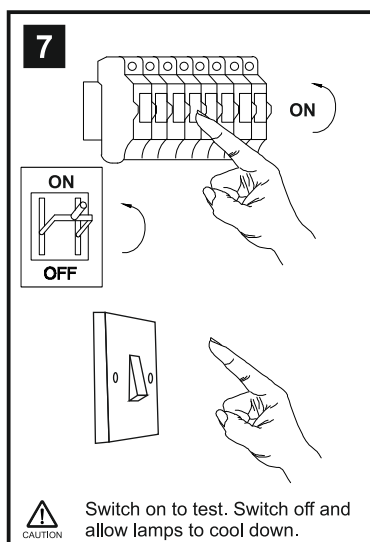
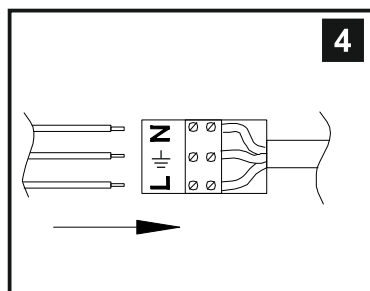
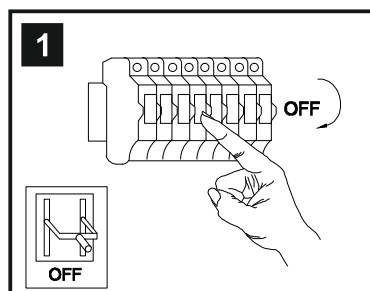


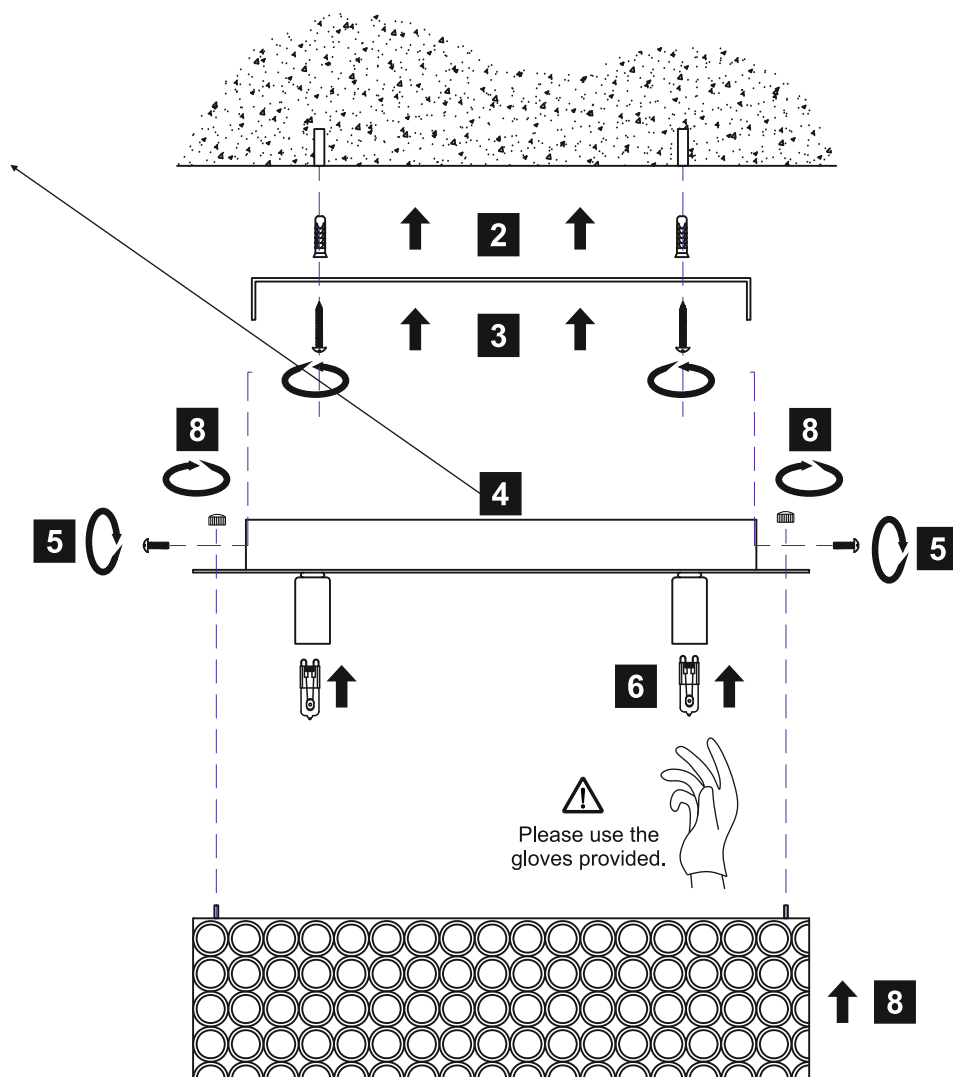
INSTALLATION INSTRUCTIONS

(ILLUSTRATIONS ARE FOR GUIDANCE PURPOSES ONLY. ACTUAL PRODUCT MAY DIFFER FROM THE IMAGES SHOWN)



Installation Pack		
White Gloves	2 Pcs	
Installation Instructions	1 Page	
Installation Guidelines	2 Pages	
G9 Lamps	8 Pcs	
Fixing Screw & Plugs	2 Sets	

Contents Checked By	
---------------------	--



- !** (1) Prior to installation carefully unpack and check all the components and accessories are as per details enclosed.
- (2) These instructions should be used in conjunction with the installation guidelines included.
- (3) Do not touch the Halogen lamp surface with your bare hands.

Voltage: 230V - 50/60Hz
Lampholder: G9
Lamps: 8 x 33W Max



CE



WITH SUITABLE DIMMER



Piazza IL30432

diyas®