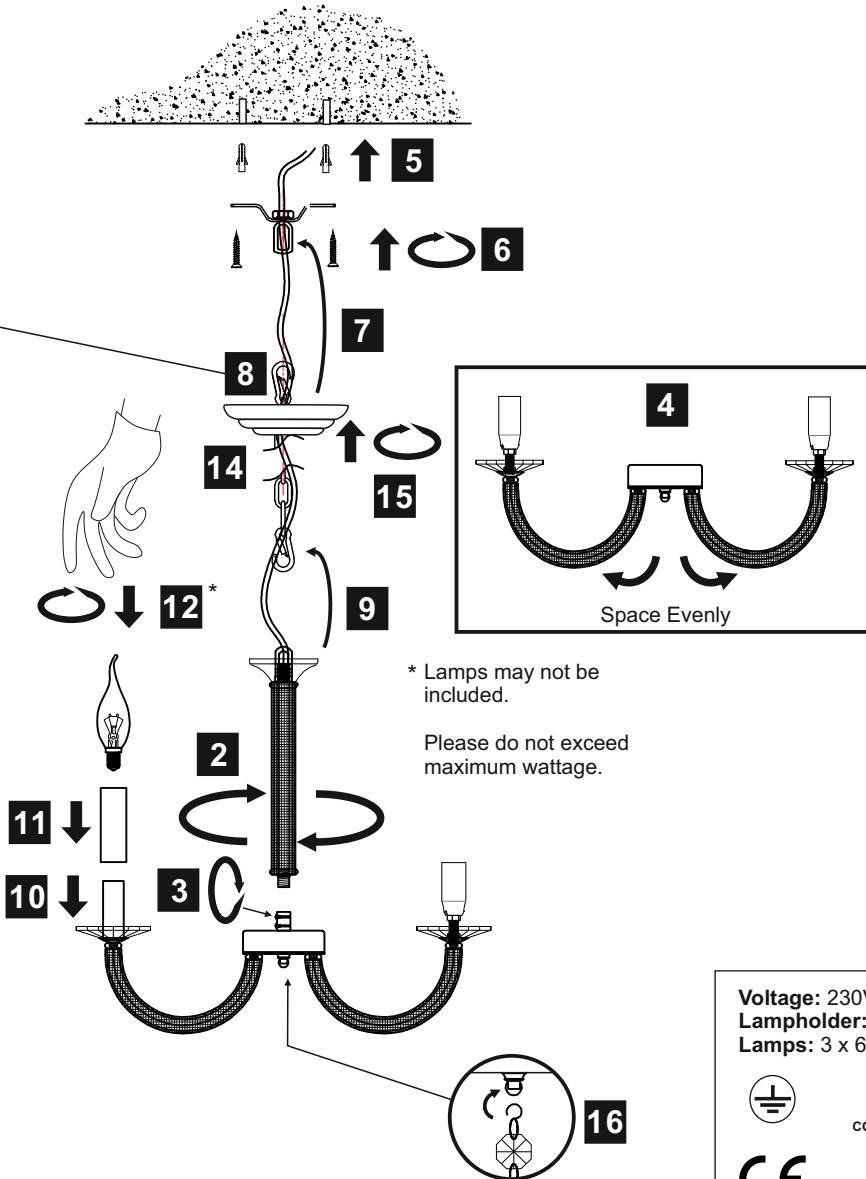
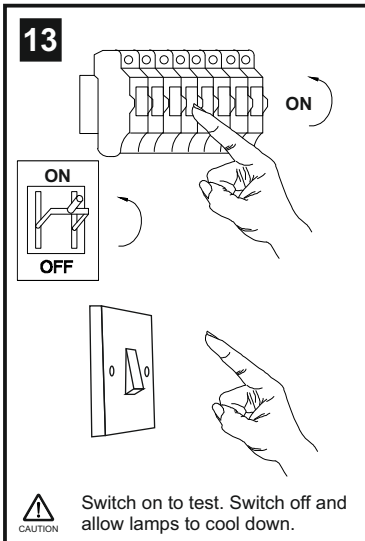
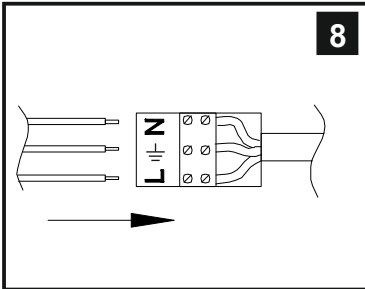
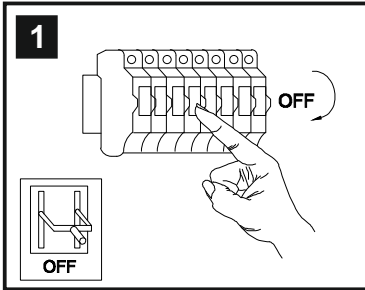


INSTALLATION INSTRUCTIONS

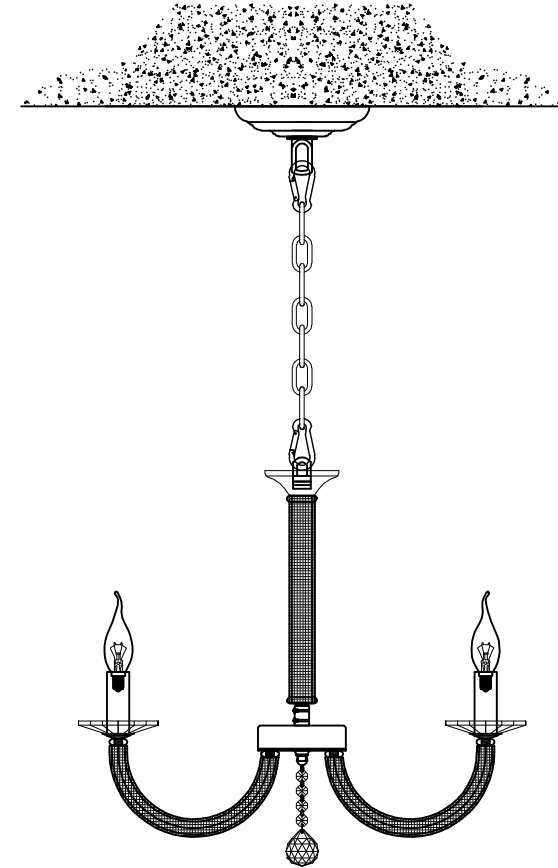
(ILLUSTRATIONS ARE FOR GUIDANCE PURPOSES ONLY.
ACTUAL PRODUCT MAY DIFFER FROM THE IMAGES SHOWN)

- !** (1) Prior to installation carefully unpack and check all the components and accessories are as per details enclosed.
(2) These instructions should be used in conjunction with the installation guidelines included.



* Lamps may not be included.

Please do not exceed maximum wattage.



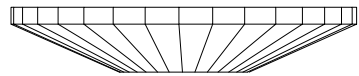
Voltage: 230V - 50/60Hz
Lampholder: E14/SES
Lamps: 3 x 60W Max



Elena IL30513/IL30373/IL30473

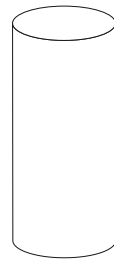
diyas®

LIST OF COMPONENTS

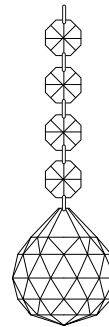


(C80003)

(B)



Lampholder Sleeve



4 x C50000

C10040

(A)

Crystal Accessories

Crystal Strand A	1 Pc	
Crystal Sconce B	3 Pcs	
Lampholder Sleeve 83mm x 29mm	3 Pcs	

Installation Pack

White Gloves	2 Pcs	
Installation Instructions	2 Pages	
Installation Guidelines	2 Pages	
Fixing Screw and Plug	2 Sets	

Contents Checked By

Elena IL30513/IL30373/IL30473

