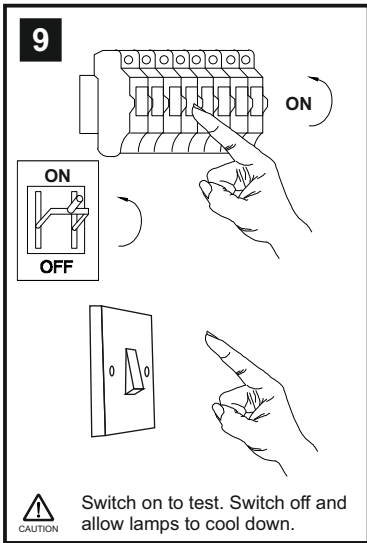
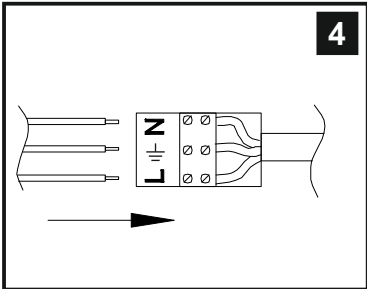
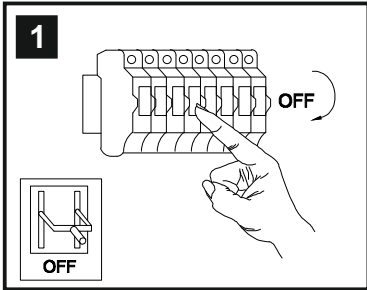


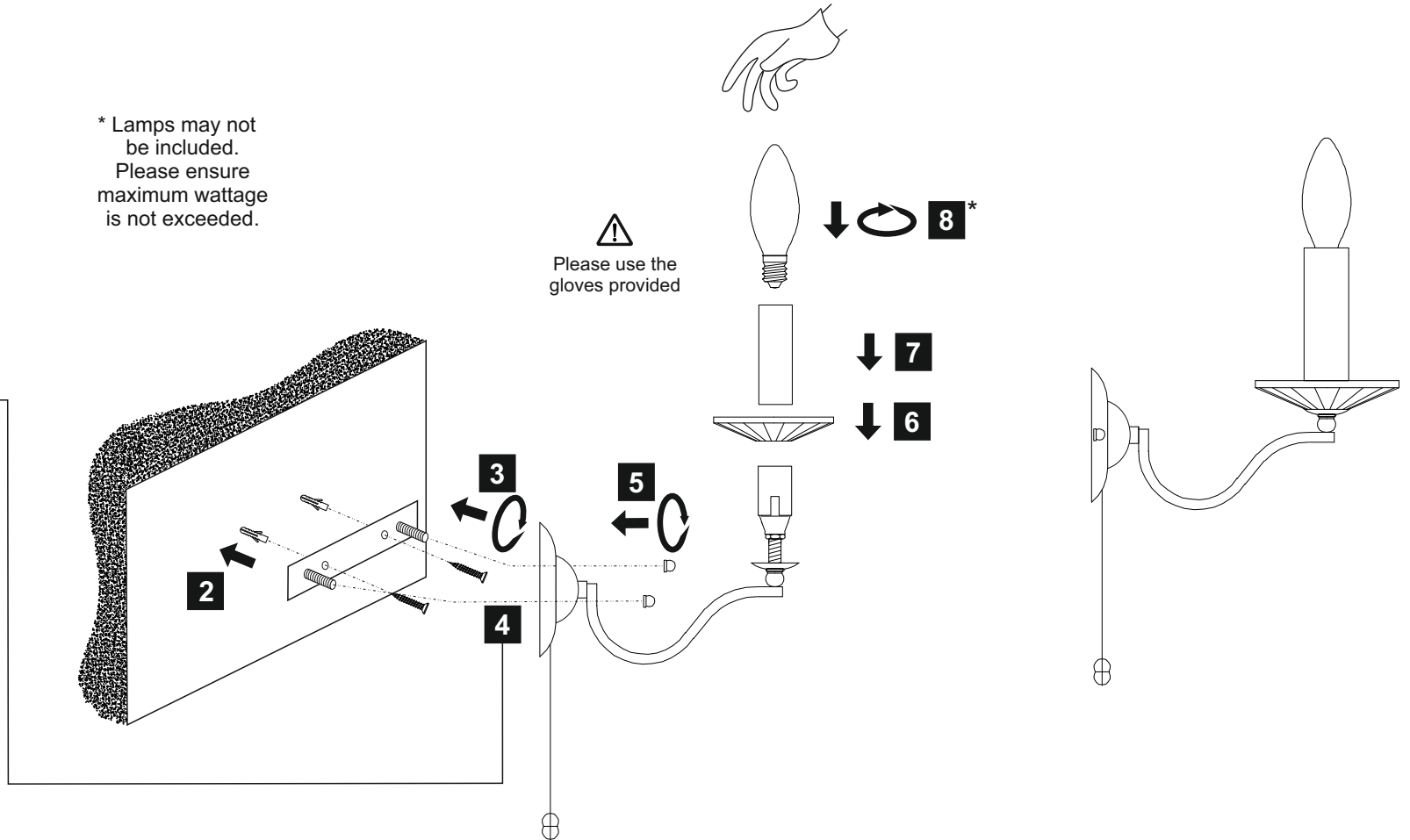
# INSTALLATION INSTRUCTIONS

(ILLUSTRATIONS ARE FOR GUIDANCE PURPOSES ONLY.  
ACTUAL PRODUCT MAY DIFFER FROM THE IMAGES SHOWN)

- ⚠ (1) Prior to installation carefully unpack and check all the components and accessories are as per details enclosed.
- (2) These instructions should be used in conjunction with the installation guidelines included.



\* Lamps may not be included.  
Please ensure maximum wattage is not exceeded.

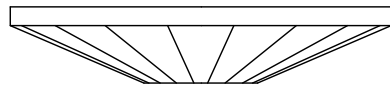


Voltage: 230V - 50/60Hz  
Lampholder: E14  
Lamps: 1 x 60W Max



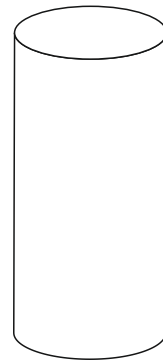
Niobe IL30341 / IL30441

**diy**as®



(C80003)

(A)



Lampholder Sleeve

Crystal Accessories		
Crystal Sconce A	1 Pc	
Lampholder Sleeve	1 Pc	

Installation Pack		
White Gloves	2 Pcs	
Installation Instructions	2 Pages	
Installation Guidelines	2 Pages	
Fixing Screw & Plug	2 Sets	

<b>Contents Checked By</b>	
----------------------------	--

**Niobe IL30341 / IL30441**

