

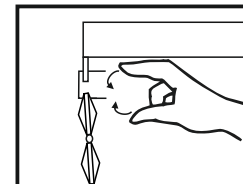
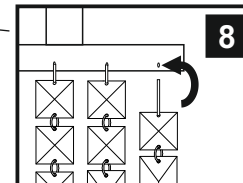
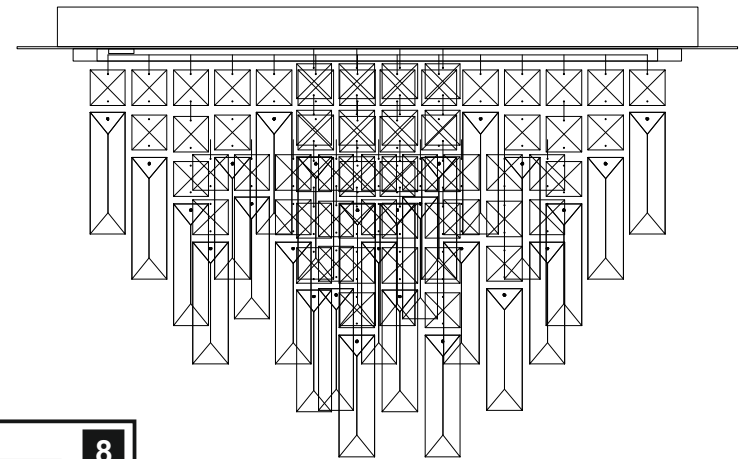
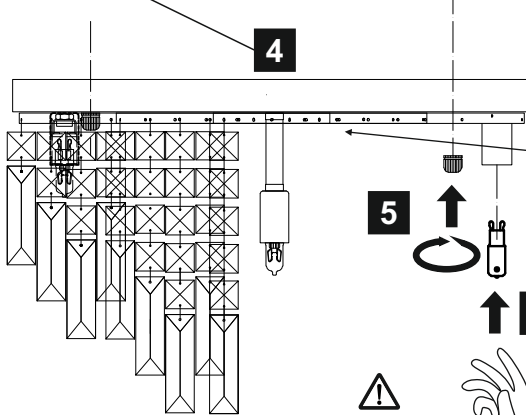
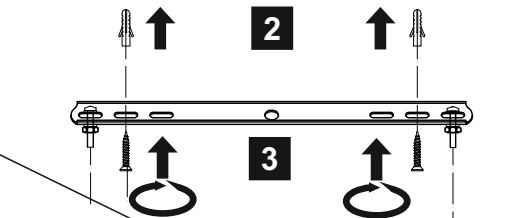
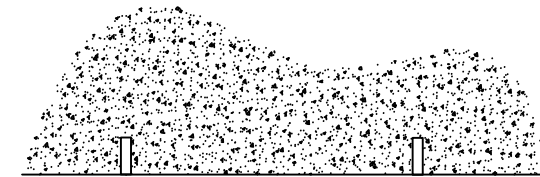
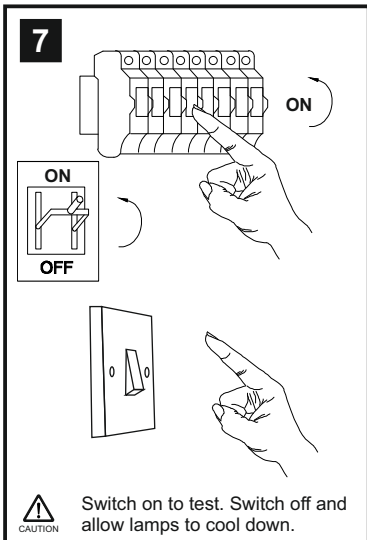
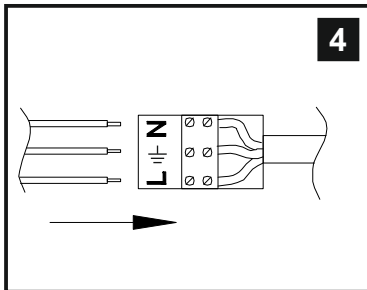
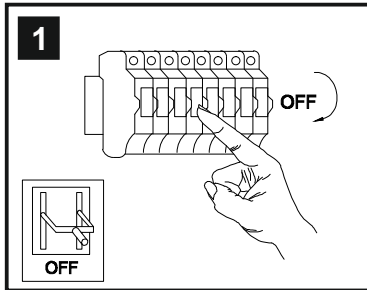
# INSTALLATION INSTRUCTIONS

(ILLUSTRATIONS ARE FOR GUIDANCE PURPOSES ONLY.  
ACTUAL PRODUCT MAY DIFFER FROM THE IMAGES SHOWN)



(1) Prior to installation carefully unpack and check all the components and accessories are as per details enclosed.

(2) These instructions should be used in conjunction with the installation guidelines included.



⚠ Please use the gloves provided.

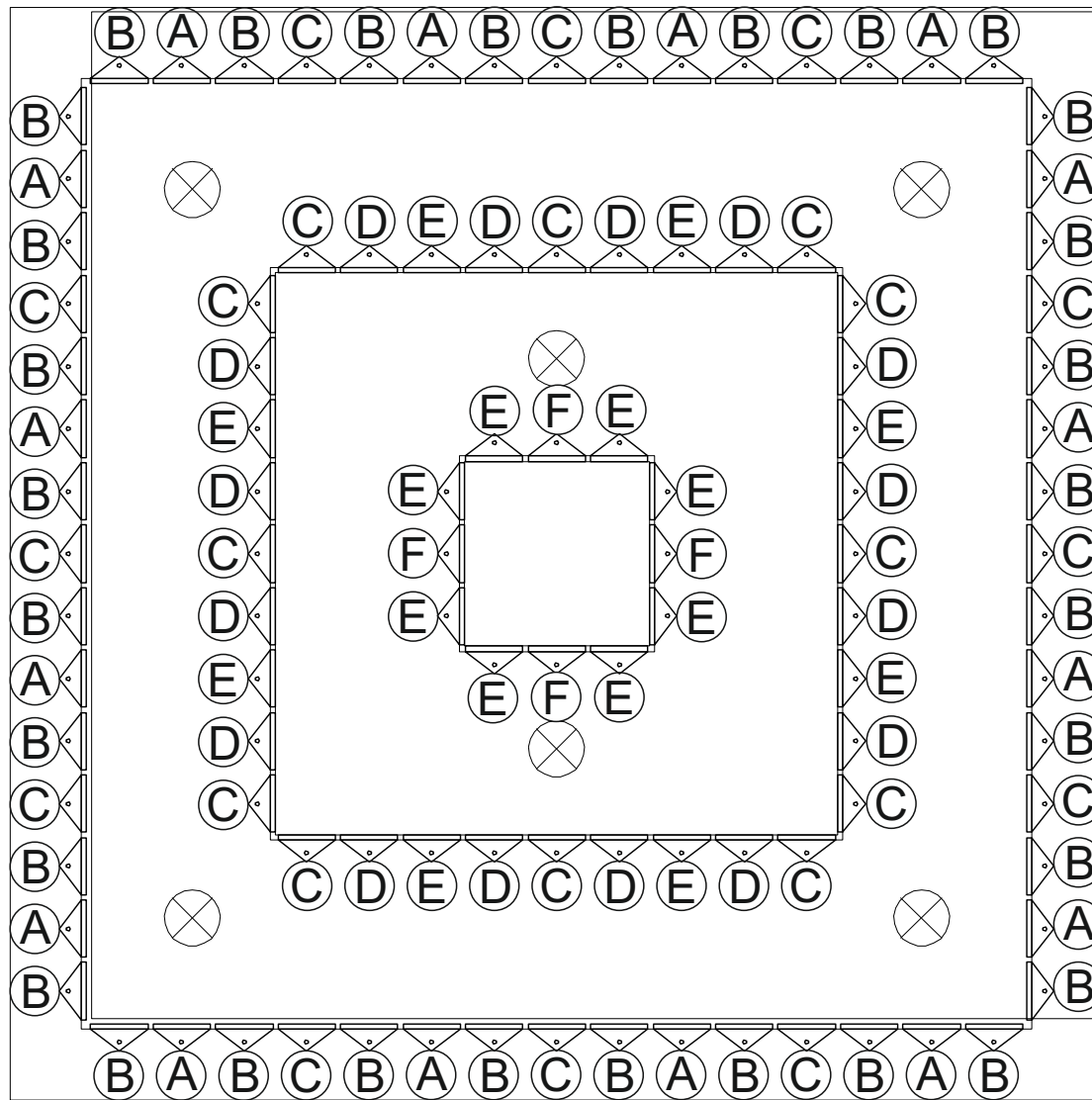
\* Lamps may not be included.  
Please ensure maximum wattage is not exceeded.

Voltage: 230V - 50/60Hz  
Lampholder: G9  
Lamps: 6 x 33W Max



Maddison IL30252 / IL31712

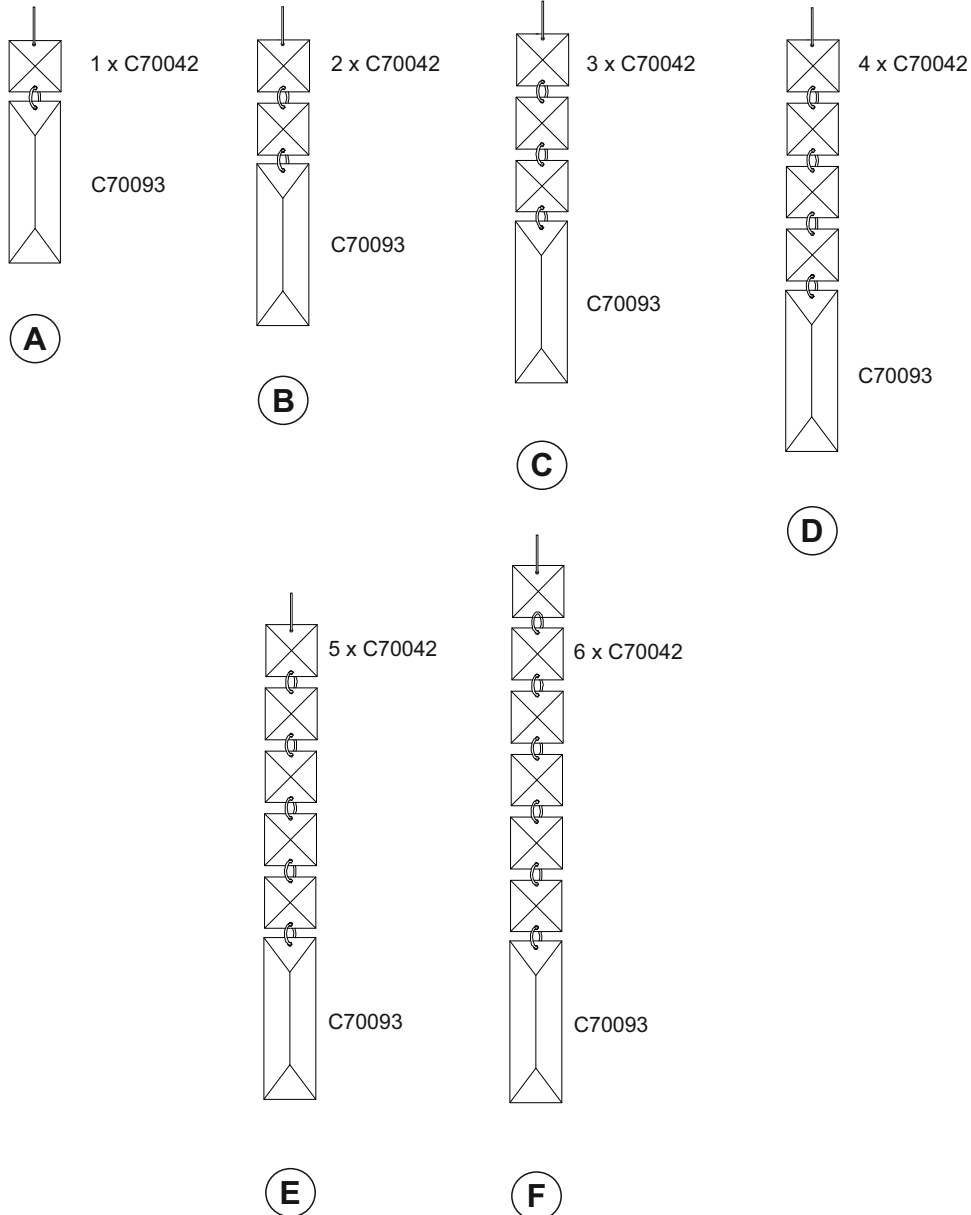
diyás®



Maddison IL30252 / IL31712



# LIST OF COMPONENTS



## Crystal Accessories

Crystal Strand A	16 Pcs	
Crystal Strand B	32 Pcs	
Crystal Strand C	24 Pcs	
Crystal Strand D	16 Pcs	
Crystal Strand E	16 Pcs	
Crystal Strand F	4 Pcs	

## Installation Pack

White Gloves	2 Pcs	
Installation Instructions	2 Pages	
Installation Guidelines	2 Pages	
Fixing Screw and Plugs	4 Sets	
Additional Crystal Links	6 Pcs	

**Contents Checked By**

**Maddison IL30252 / IL31712**

**diy**as<sup>®</sup>