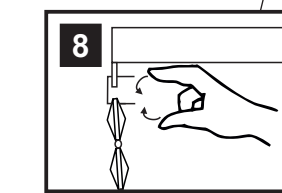
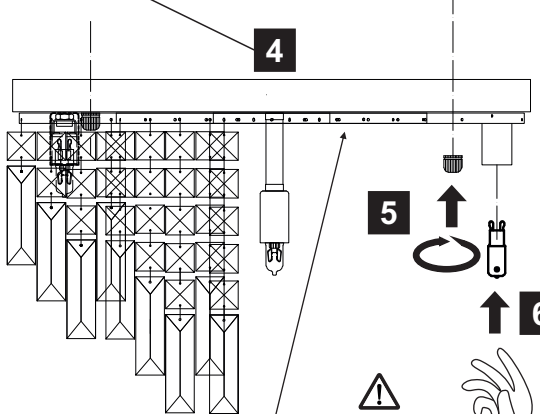
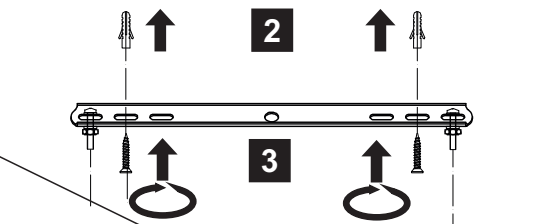
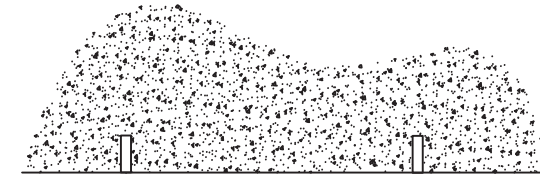
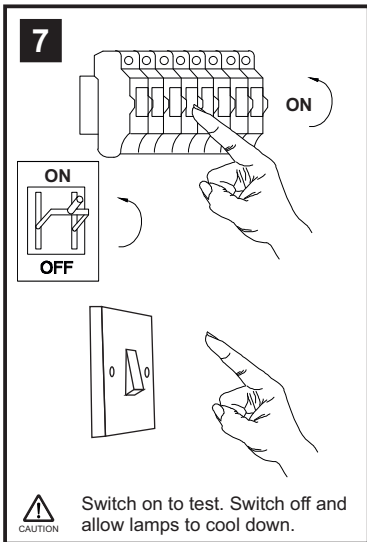
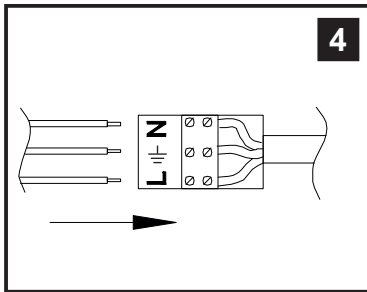
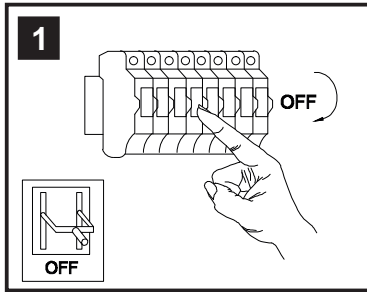


# INSTALLATION INSTRUCTIONS

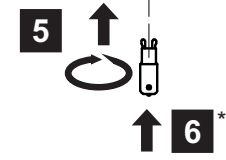
(ILLUSTRATIONS ARE FOR GUIDANCE PURPOSES ONLY.  
ACTUAL PRODUCT MAY DIFFER FROM THE IMAGES SHOWN)



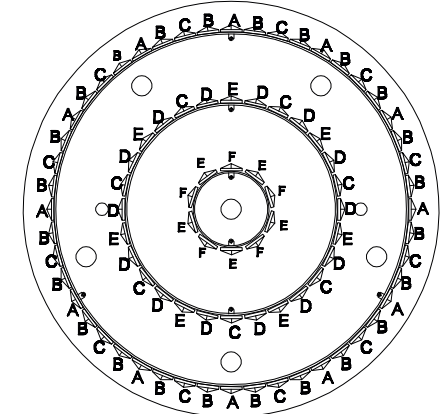
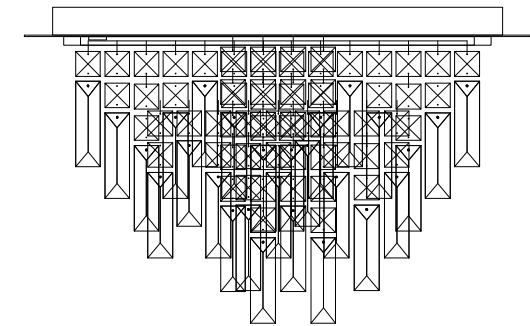
- (1) Prior to installation carefully unpack and check all the components and accessories are as per details enclosed.
- (2) These instructions should be used in conjunction with the installation guidelines included.



⚠ Please use the gloves provided.



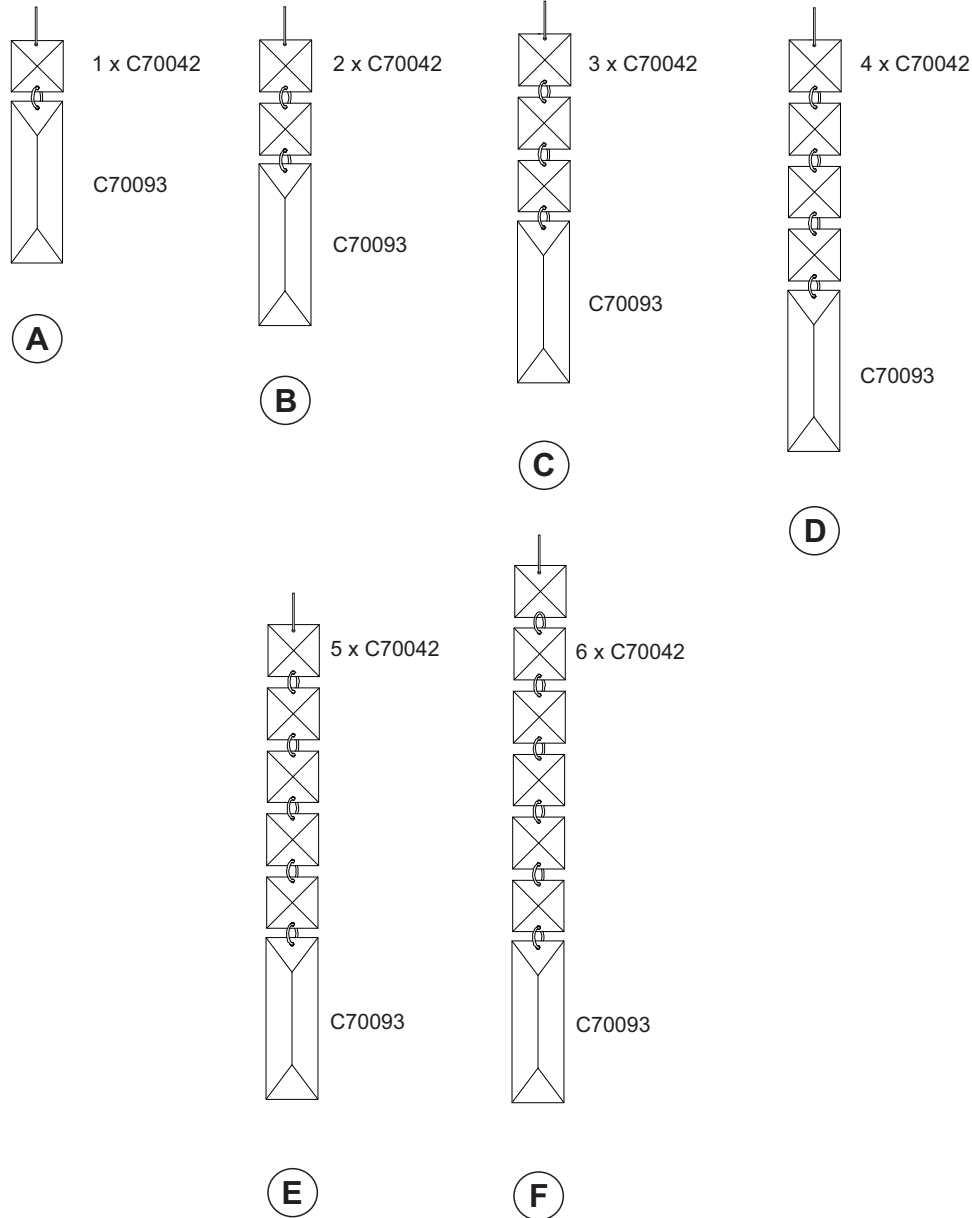
\* Lamps may not be included. Please ensure maximum wattage is not exceeded.



Voltage: 230V - 50/60Hz  
Lampholder: G9  
Lamps: 6 x 33W Max

Maddison IL30251 / IL31711

# LIST OF COMPONENTS



## Crystal Accessories

Crystal Strand A	12 Pcs	
Crystal Strand B	24 Pcs	
Crystal Strand C	19 Pcs	
Crystal Strand D	14 Pcs	
Crystal Strand E	12 Pcs	
Crystal Strand F	5 Pcs	

## Installation Pack

White Gloves	2 Pcs	
Installation Instructions	2 Pages	
Installation Guidelines	2 Pages	
Fixing Screw and Plugs	4 Sets	

**Contents Checked By**

**Maddison IL30251 / IL31711**

**diy**as®