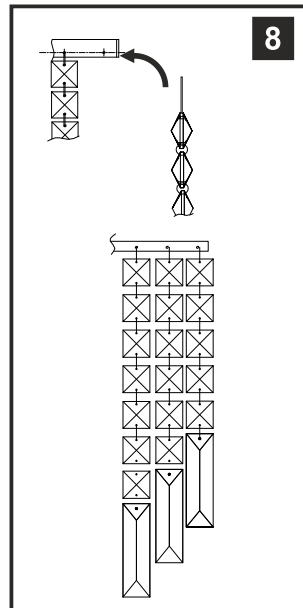
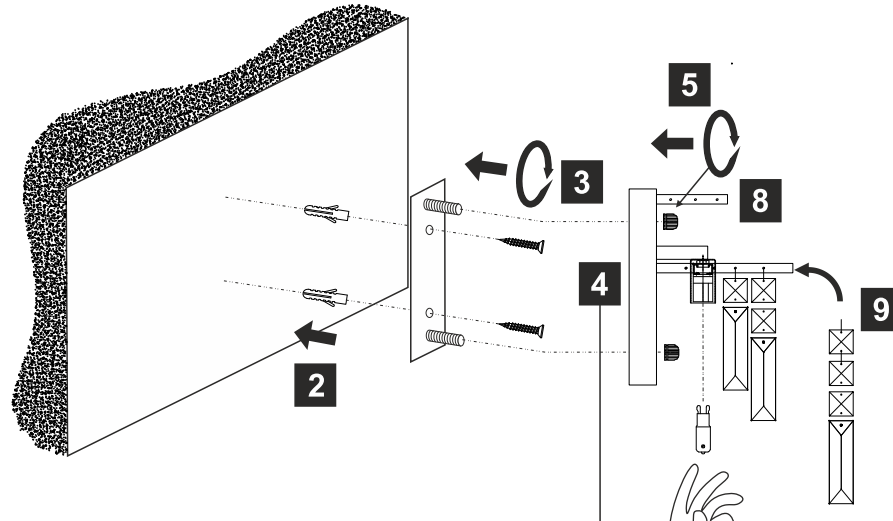
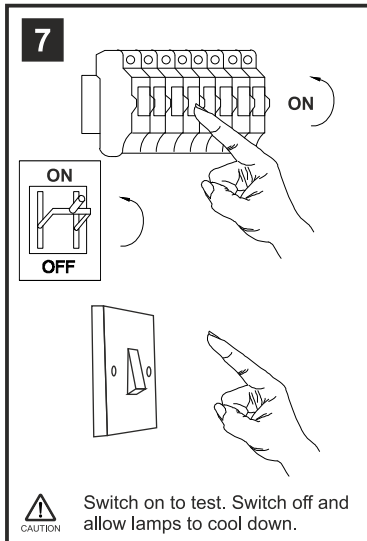
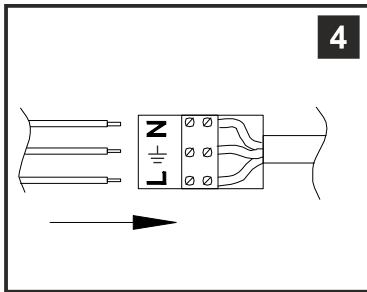
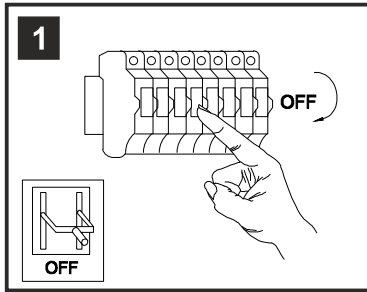


INSTALLATION INSTRUCTIONS

(ILLUSTRATIONS ARE FOR GUIDANCE PURPOSES ONLY.
ACTUAL PRODUCT MAY DIFFER FROM THE IMAGES SHOWN)

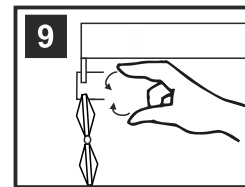
⚠ INSTALLATION NOTES

- (1) Prior to installation carefully unpack and check all the components and accessories are as per details enclosed.
- (2) These instructions should be used in conjunction with the installation guidelines included.



⚠ Please use the gloves provided.

* Lamps may not be included. Please ensure maximum wattage is not exceeded.



Voltage: 230V - 50/60Hz
Lampholder: G9
Lamps: 2 x 33W Max

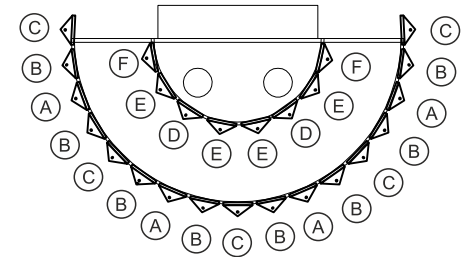
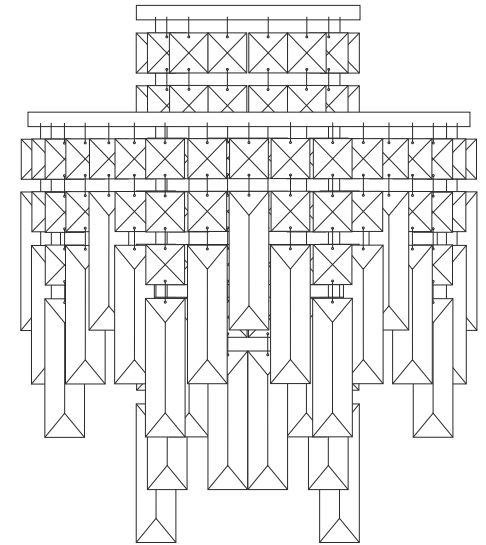


LED
COMPATIBLE



CE

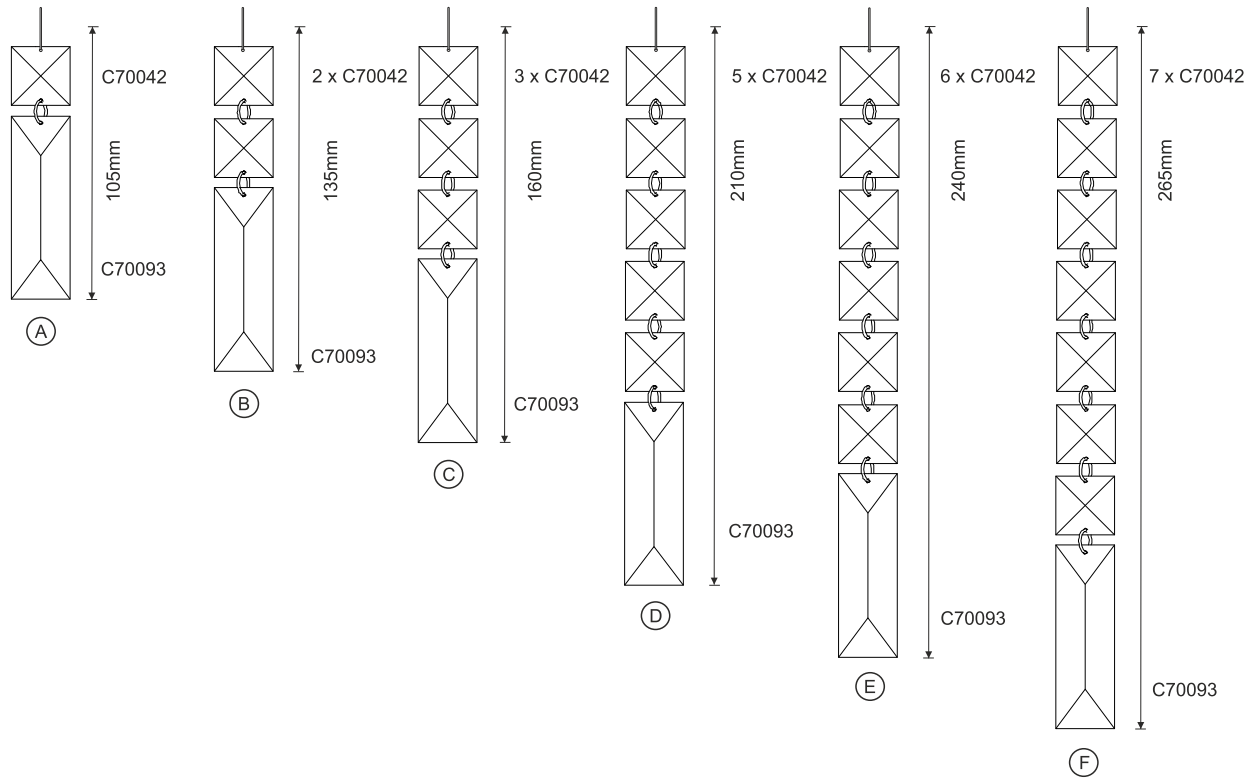
WITH SUITABLE
DIMMER/LAMP



Maddison IL30250 / IL31710

diyās®

LIST OF COMPONENTS



Crystal Accessories

Crystal Strand A	4 Pcs	
Crystal Strand B	8 Pcs	
Crystal Strand C	5 Pcs	
Crystal Strand D	2 Pcs	
Crystal Strand E	4 Pcs	
Crystal Strand F	2 Pcs	

Installation Pack

White Gloves	2 Pcs	
Installation Instructions	2 Pages	
Installation Guidelines	2 Pages	
Fixing Screw & Plug	2 Sets	

Contents Checked By

Maddison IL30250 / IL31710

diyas®