

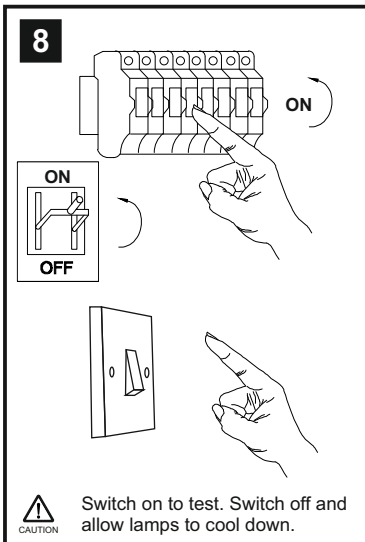
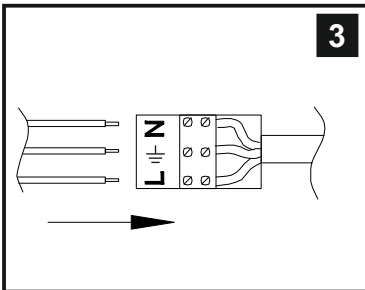
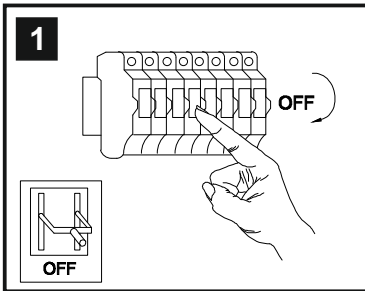
INSTALLATION INSTRUCTIONS

(ILLUSTRATIONS ARE FOR GUIDANCE PURPOSES ONLY.
ACTUAL PRODUCT MAY DIFFER FROM THE IMAGES SHOWN)

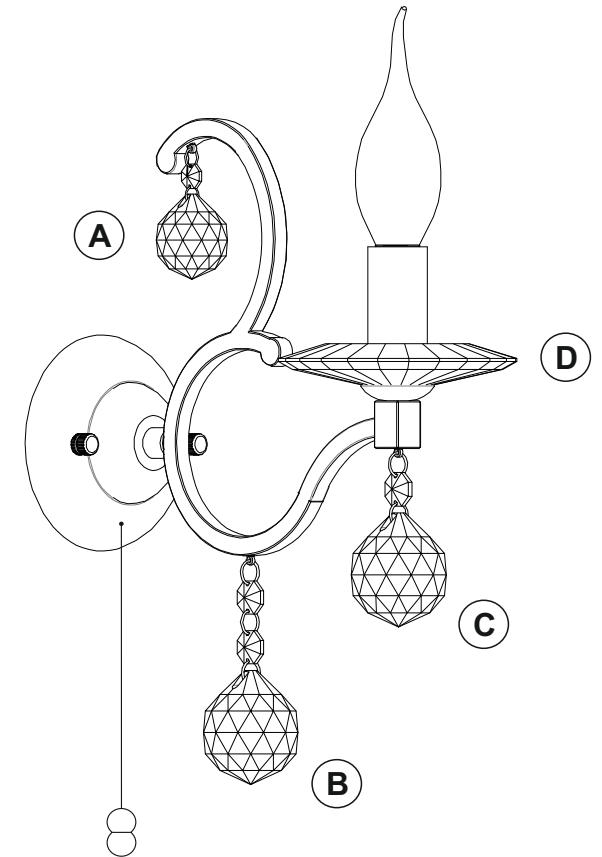
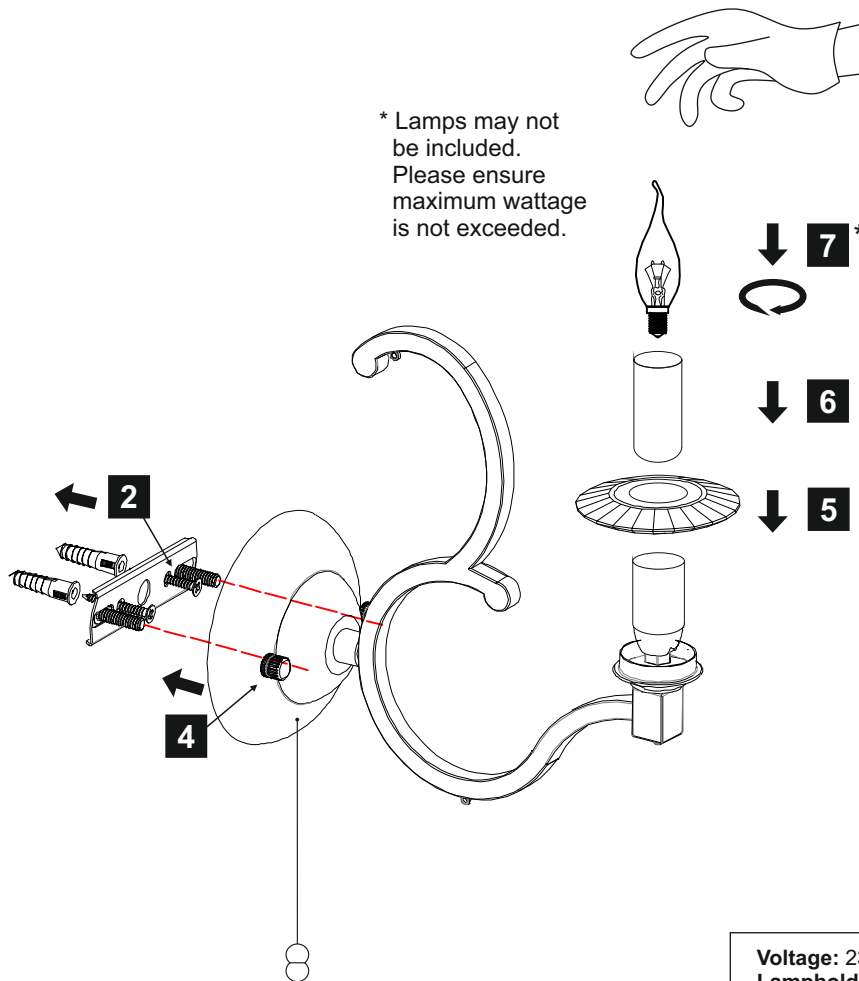
⚠️ INSTALLATION NOTES

(1) Prior to installation carefully unpack and check all the components and accessories are as per details enclosed.

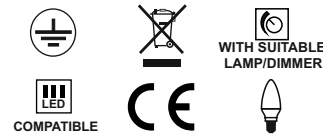
(2) These instructions should be used in conjunction with the installation guidelines included.



* Lamps may not be included.
Please ensure maximum wattage is not exceeded.



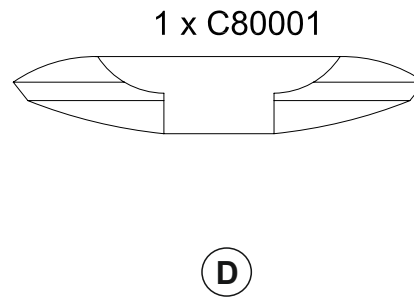
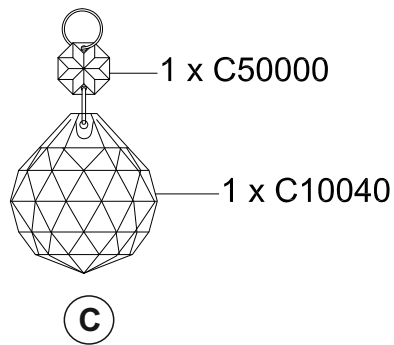
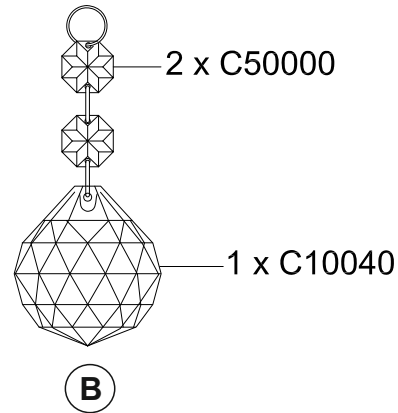
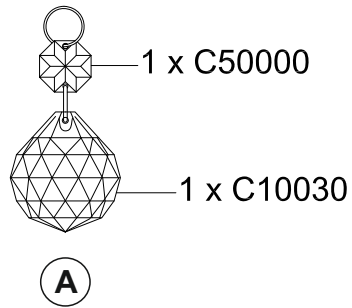
Voltage: 230V - 50/60Hz
Lampholder: SES/E14
Lamps: 1 x 60W Max



Zinta IL30121 / IL30221

diyās

LIST OF COMPONENTS



Lampholder Sleeve

Crystal Accessories		
Crystal Strand A	1 Pc	
Crystal Strand B	1 Pc	
Crystal Strand C	1 Pc	
Crystal Sconce D	1 Pc	
29 x 60mm Lampholder Sleeve	1 Pc	

Installation Pack		
White Gloves	2 Pcs	
Installation Instructions	2 Pages	
Installation Guidelines	2 Pages	
Fixing Screws and Plugs	2 Sets	
Additional Crystal Links	3 Pcs Each	

Contents Checked By	
----------------------------	--

Zinta IL30121 / IL30221

