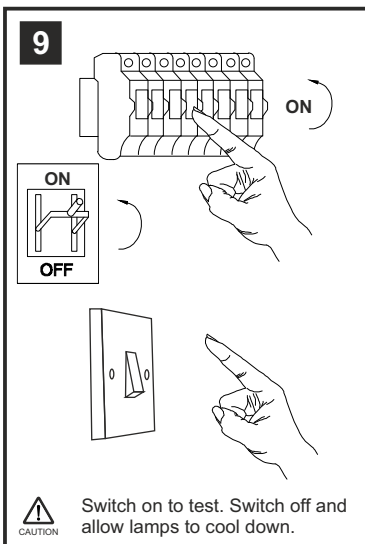
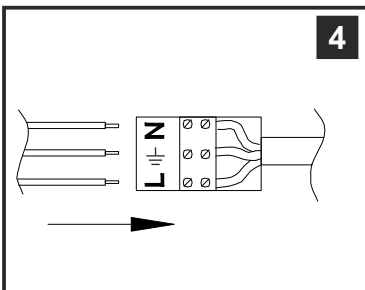
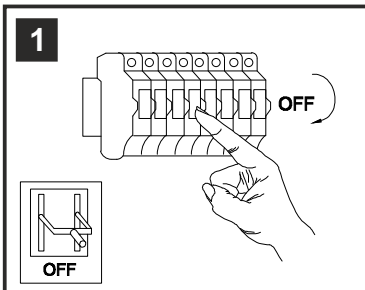


INSTALLATION INSTRUCTIONS

(ILLUSTRATIONS ARE FOR GUIDANCE PURPOSES ONLY.
ACTUAL PRODUCT MAY DIFFER FROM THE IMAGES SHOWN)

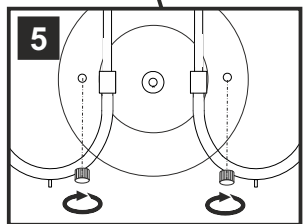
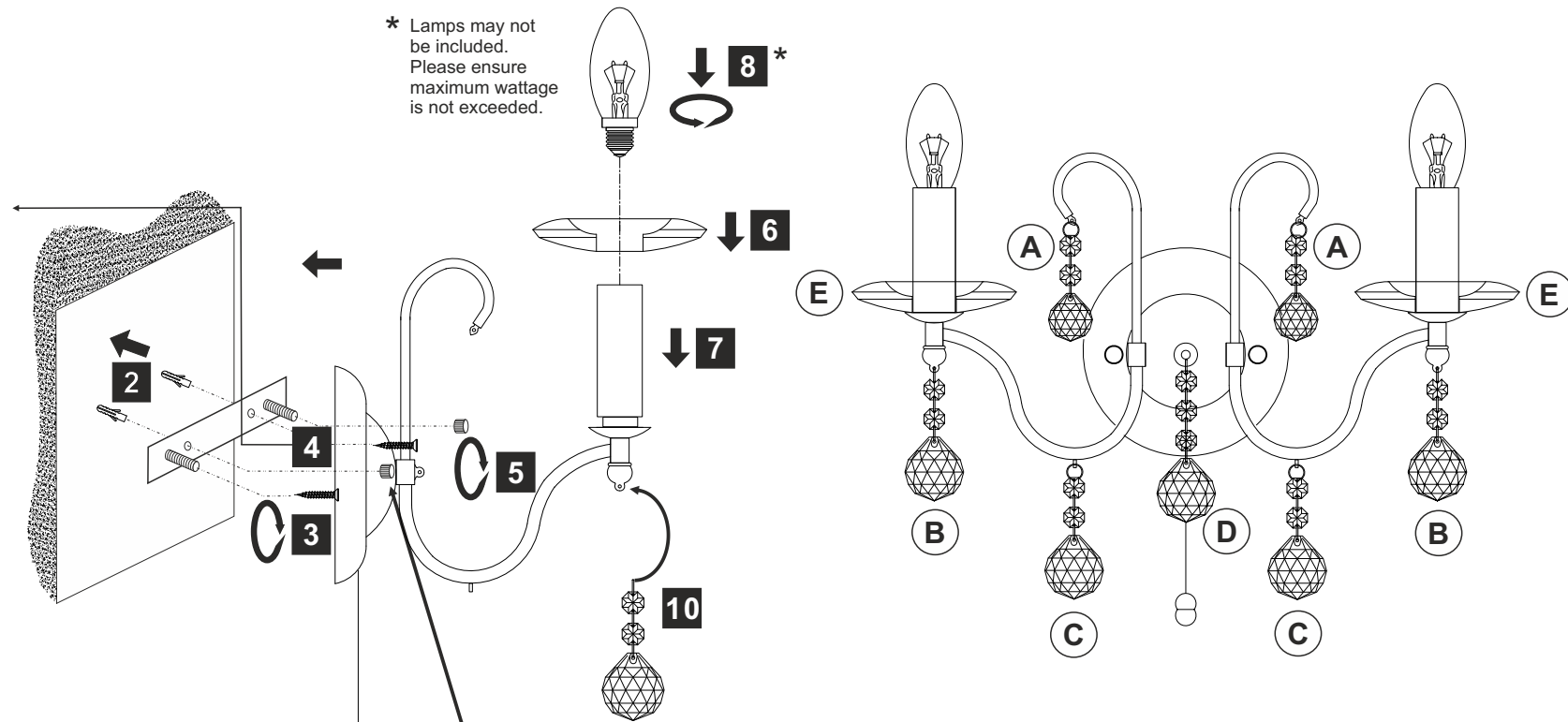


- (1) Prior to installation carefully unpack and check all the components and accessories are as per details enclosed.
- (2) These instructions should be used in conjunction with the installation guidelines included.



Please use the gloves provided.

* Lamps may not be included. Please ensure maximum wattage is not exceeded.



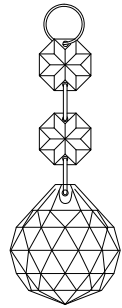
Voltage: 230V - 50/60Hz
Lampholder: SES/E14
Lamps: 2 x 60W Max



Bianco IL30112 / IL30212



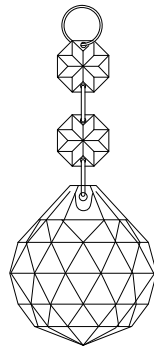
LIST OF COMPONENTS



2 x C50000

1 x C10030

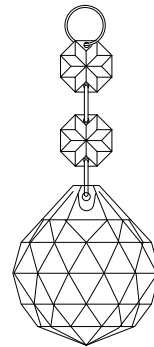
A



2 x C50000

1 x C10040

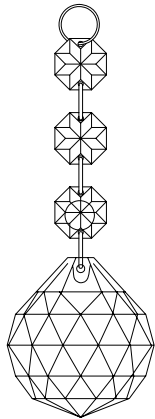
B



2 x C50000

1 x C10040

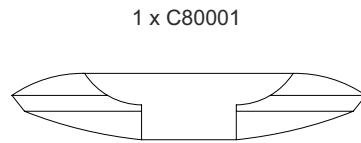
C



3 x C50000

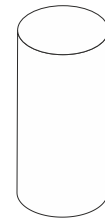
1 x C10040

D



1 x C80001

E



Lampholder
Sleeve

Crystal Accessories

Crystal Strand A	2 Pcs	
Crystal Strand B	2 Pcs	
Crystal Strand C	2 Pcs	
Crystal Strand D	1 Pc	
Crystal Sconce E	2 Pcs	
Lampholder Sleeve	2 Pcs	

Installation Pack

White Gloves	2 Pcs	
Installation Instructions	2 Pages	
Installation Guidelines	2 Pages	
Additional Crystal Links	2 Pcs Each	
Fixing Screw & Plug	2 Sets	

Contents Checked By

Bianco IL30112 / IL30212

diyas®