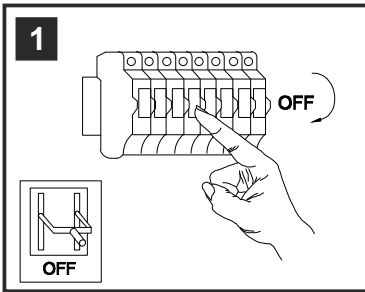


INSTALLATION INSTRUCTIONS

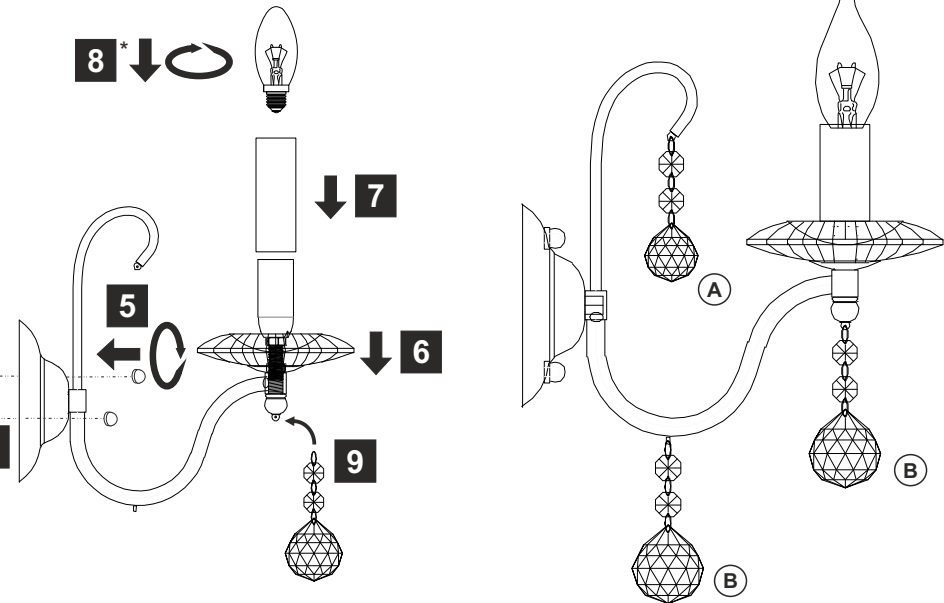
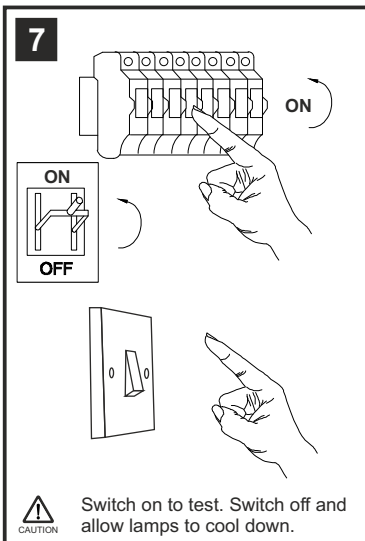
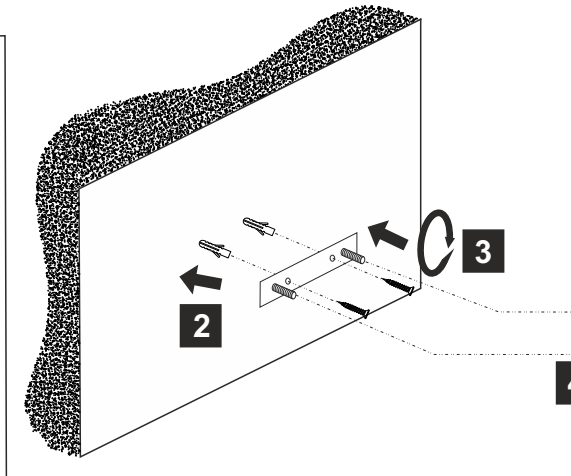
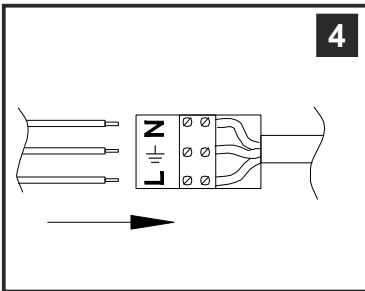
(ILLUSTRATIONS ARE FOR GUIDANCE PURPOSES ONLY.
ACTUAL PRODUCT MAY DIFFER FROM THE IMAGES SHOWN)

- ⚠ (1) Prior to installation carefully unpack and check all the components and accessories are as per details enclosed.
- (2) These instructions should be used in conjunction with the installation guidelines included.

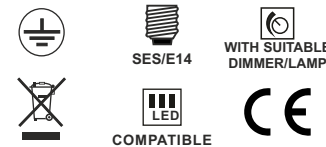


* Lamps may not be included.
Please ensure maximum wattage is not exceeded.

⚠ Please use the gloves provided.



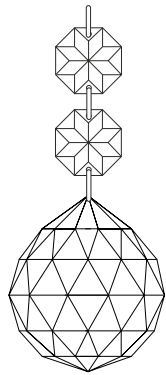
Voltage: 230V - 50/60Hz
Lampholder: E14/SES
Lamps: 1 x MAX 60W



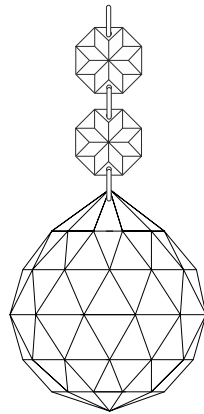
Bianco IL30111 / IL30211

diyas®

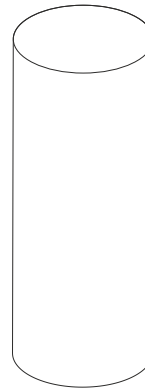
LIST OF COMPONENTS



A



B



Lampholder
Sleeve

Crystal Accessories

Crystal Strand A	1 Pcs	
Crystal Strand B	2 Pcs	
Lampholder Sleeve	1 Pc	

Installation Pack

White Gloves	2 Pcs	
Installation Instructions	2 Pages	
Installation Guidelines	2 Pages	
Fixing Screw & Plug	2 Sets	

Contents Checked By

Bianco IL30111 / IL30211

diyās®