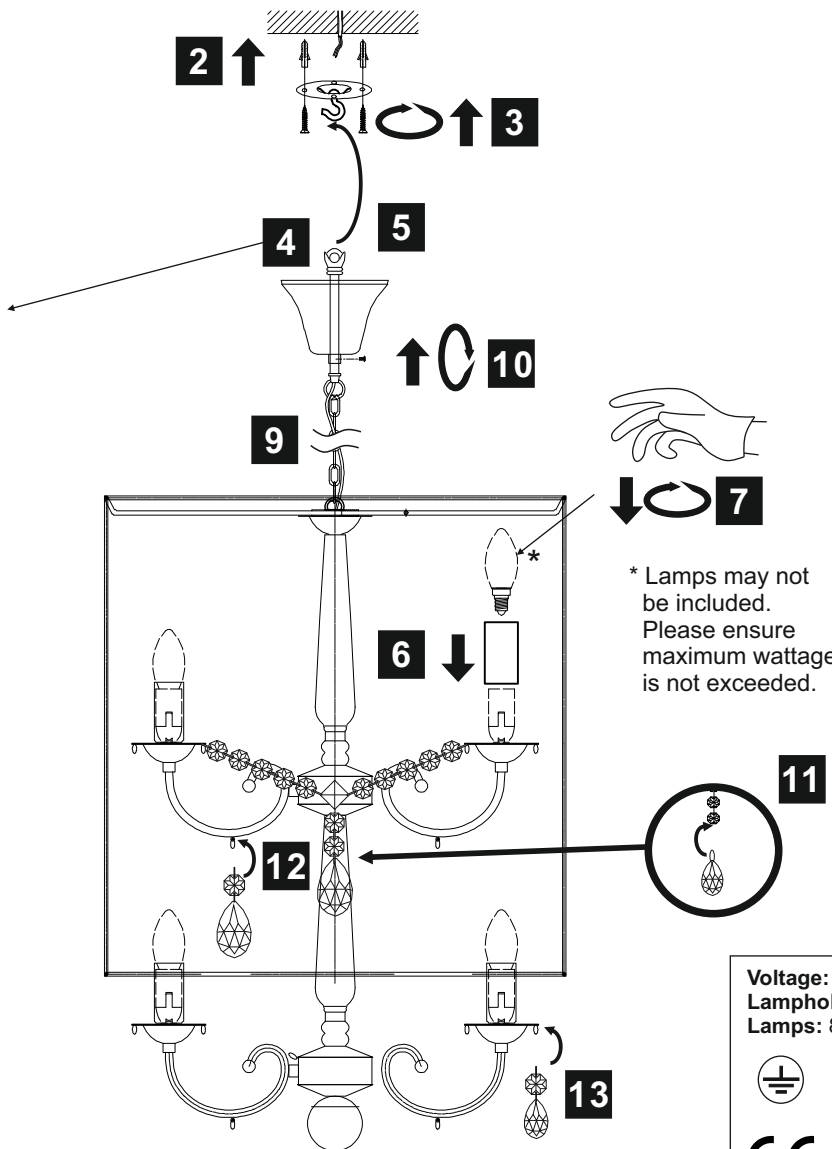
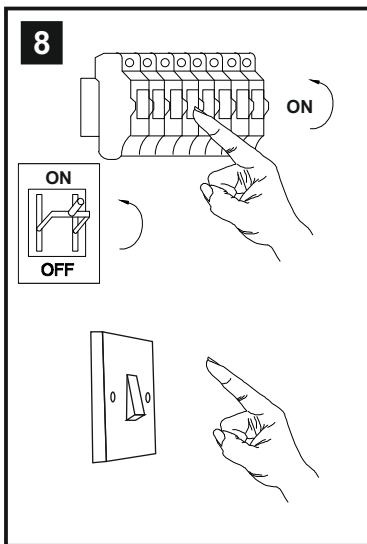
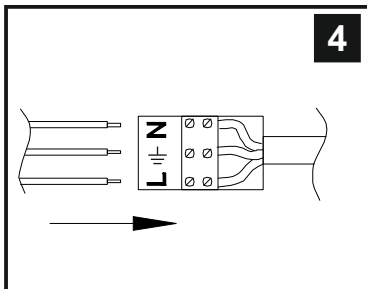
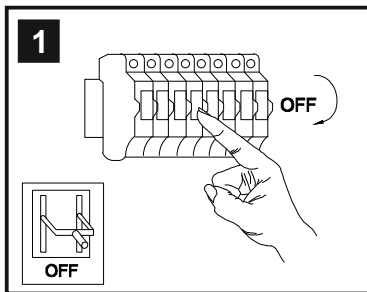


# INSTALLATION INSTRUCTIONS

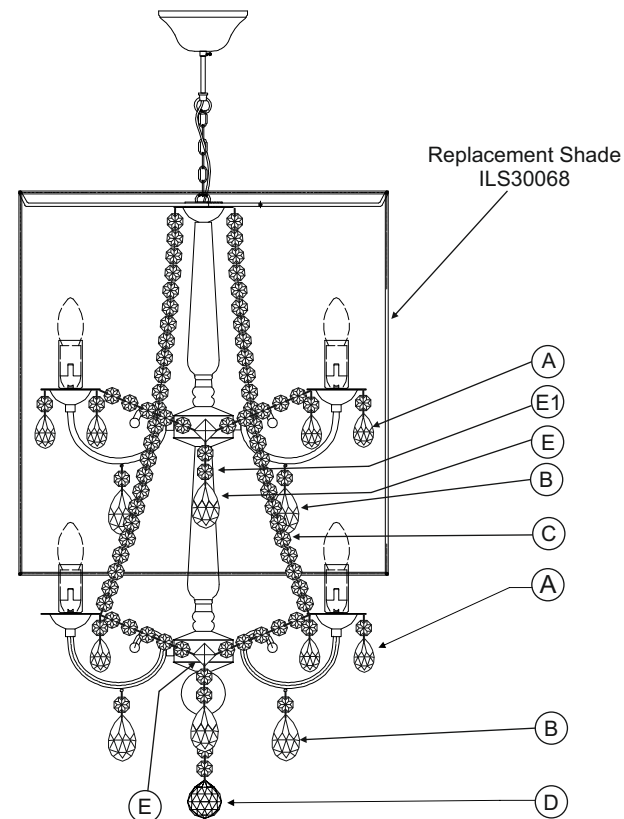
(ILLUSTRATIONS ARE FOR GUIDANCE PURPOSES ONLY.  
ACTUAL PRODUCT MAY DIFFER FROM THE IMAGES SHOWN)



- (1) Prior to installation carefully unpack and check all the components and accessories are as per details enclosed.
- (2) These instructions should be used in conjunction with the installation guidelines included.



\* Lamps may not be included.  
Please ensure maximum wattage is not exceeded.



Voltage: 230V - 50/60Hz  
Lampholder: SES/E14  
Lamps: 8 x 40W Max



COMPATIBLE



WITH SUITABLE  
LAMP/DIMMER



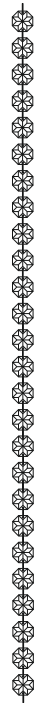
Ella IL30068

diyás®

# LIST OF COMPONENTS

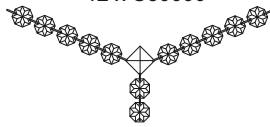
## Pre-Attached Crystal

26 x C50000



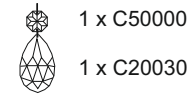
(C)

12 x C50000



(E1)

## Unattached Crystal



1 x C50000

1 x C20030

(A)



2 x C50000

1 x C10040

(D)



Lampholder  
Sleeve



1 x C50000

1 x C20050

(B)



1 x C20050

(E)

## Crystal Accessories

Crystal Strand A	32 Pcs	
Crystal Strand B	8 Pcs	
Crystal Strand C	4 Pcs	
Crystal Strand D	1 Pc	
Crystal Strand E	8 Pcs	
Crystal Strand E1	8 Pcs	
Lampholder Sleeve	8 Pcs	

## Installation Pack

White Gloves	2 Pcs	
Installation Instructions	2 Pages	
Installation Guidelines	2 Pages	
Additional Crystal Links	3 Pcs Each	
Fixing Screw and Plugs	2 Sets	

**Contents Checked By**

**Ella IL30068**

**diy**as®