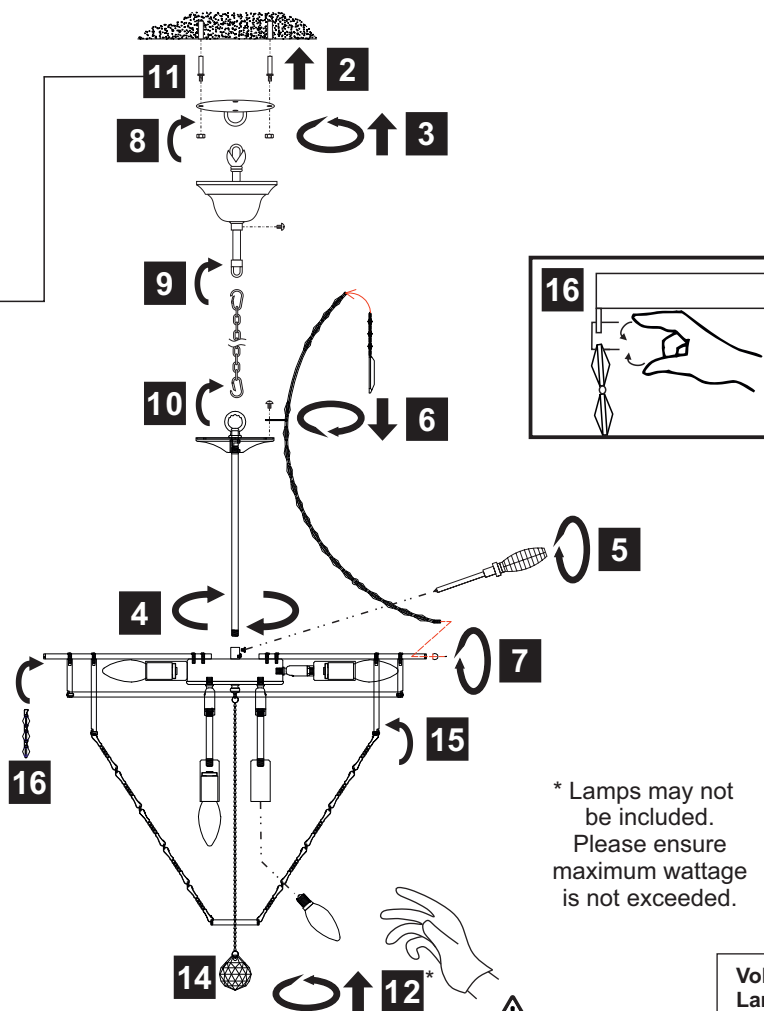
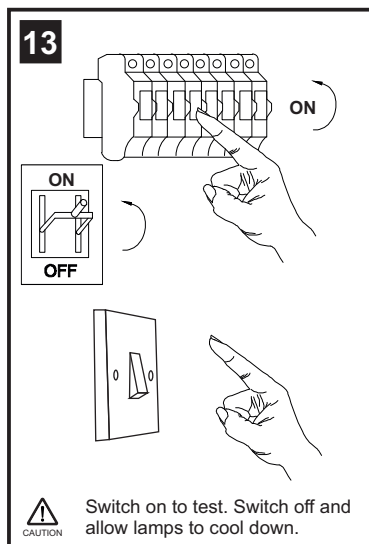
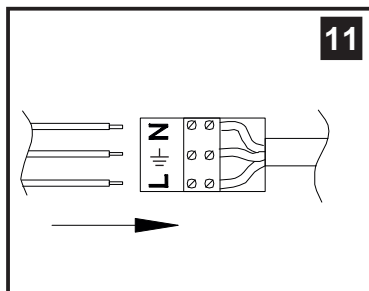
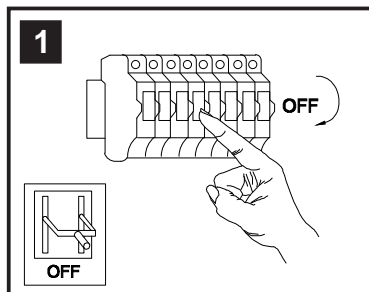


INSTALLATION INSTRUCTIONS

(ILLUSTRATIONS ARE FOR GUIDANCE PURPOSES ONLY.
ACTUAL PRODUCT MAY DIFFER FROM THE IMAGES SHOWN)

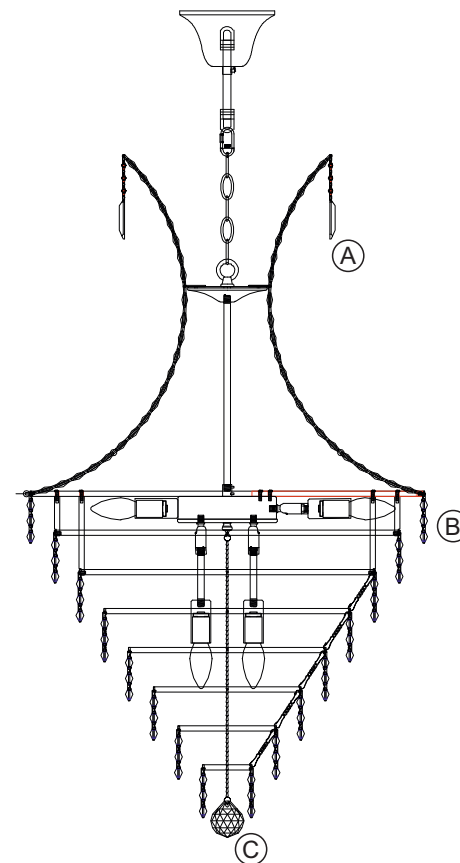


- (1) Prior to installation carefully unpack and check all the components and accessories are as per details enclosed.
- (2) These instructions should be used in conjunction with the installation guidelines included.



* Lamps may not be included.
Please ensure maximum wattage is not exceeded.

Please use the gloves provided.



Voltage: 230V - 50/60Hz
Lampholder: SES/E14
Lamps: 10 x 60W Max



COMPATIBLE



WITH SUITABLE
LAMP/DIMMER

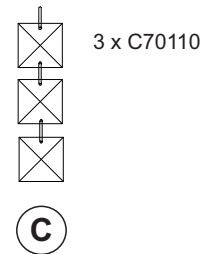
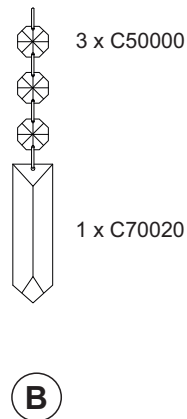
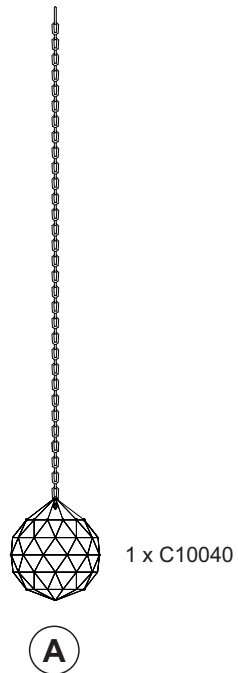


SES/E14

Kanya IL30049

diyas®

LIST OF COMPONENTS



Crystal Accessories

Crystal Strand A	1 Pc	
Crystal Strand B	8 Pcs	
Crystal Strand C	432 Pcs	

Installation Pack

White Gloves	2 Pcs	
Installation Instructions	2 Pages	
Installation Guidelines	2 Pages	
Heavy Duty Bolts	4 Sets	
Additional Crystal Links	6 Pcs	

Contents Checked By

Kanya IL30049

diyas®