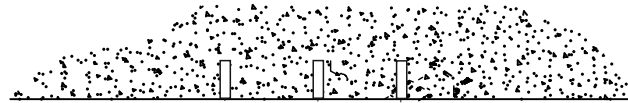
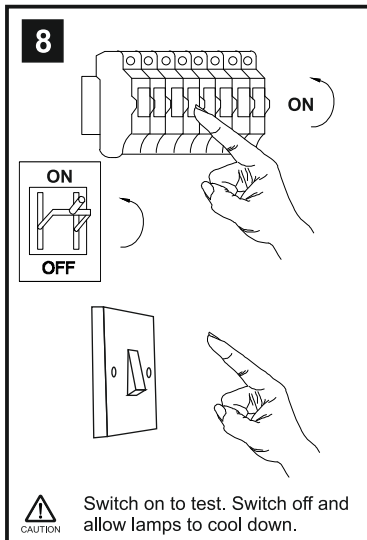
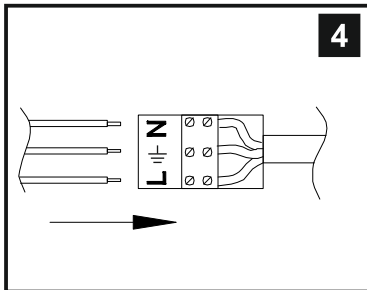
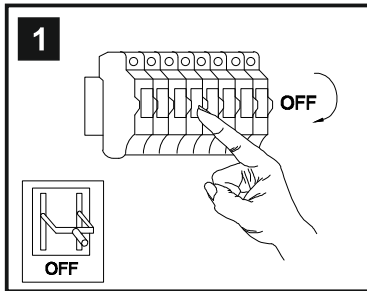


# INSTALLATION INSTRUCTIONS

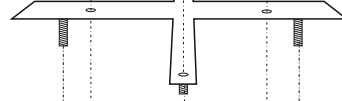
(ILLUSTRATIONS ARE FOR GUIDANCE PURPOSES ONLY.  
ACTUAL PRODUCT MAY DIFFER FROM THE IMAGES SHOWN)



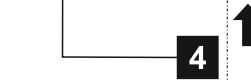
- (1) Prior to installation carefully unpack and check all the components and accessories are as per details enclosed.
- (2) These instructions should be used in conjunction with the installation guidelines included.



2 ↑

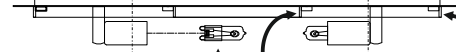


3 ↑



4 ↑

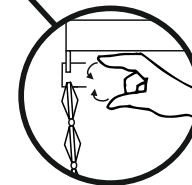
5 ↑



6 ↑



7 \*

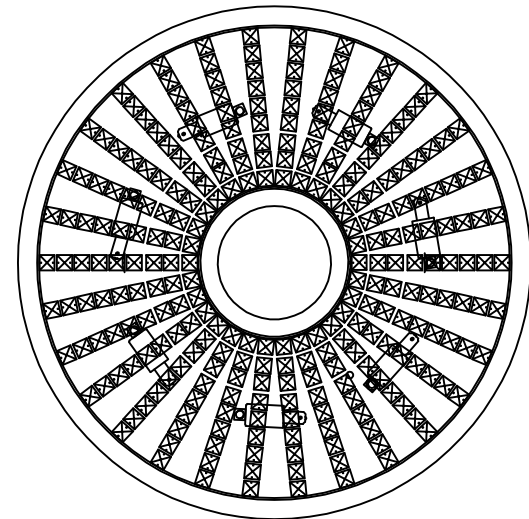
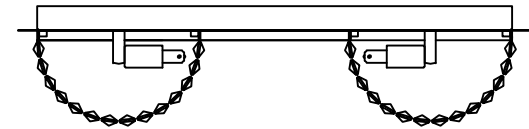


9 ↑



Please use the gloves provided.

\* Lamps may not be included.  
Please ensure maximum wattage is not exceeded.



Voltage: 230V - 50/60Hz  
Lampholder: G9  
Lamps: 7 x 33W Max



COMPATIBLE



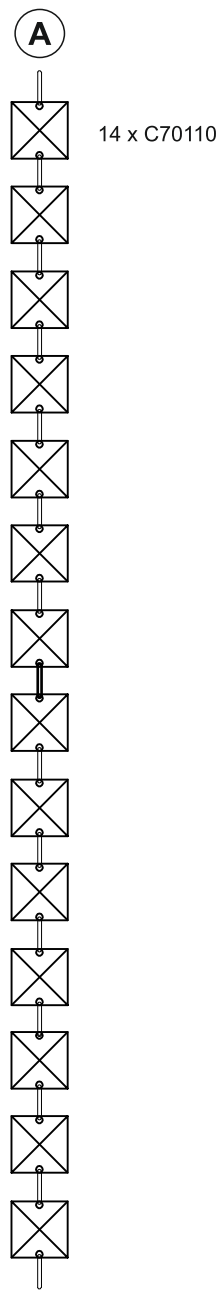
WITH SUITABLE DIMMER/LAMP



Cosmos IL30044

diyas®

LIST OF COMPONENTS



Crystal Accessories		
Crystal Strand A	30 Pcs	

Installation Pack		
White Gloves	2 Pcs	
Installation Instructions	2 Pages	
Installation Guidelines	2 Pages	
Additional Crystal Links	3 Pcs Each	
Fixing Screw & Plug	4 Sets	

Contents Checked By	
---------------------	--

Cosmos IL30044

