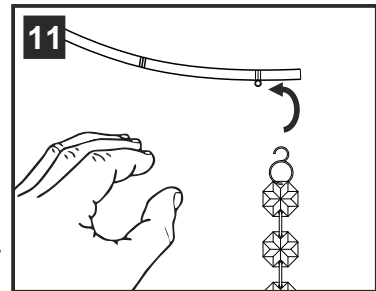
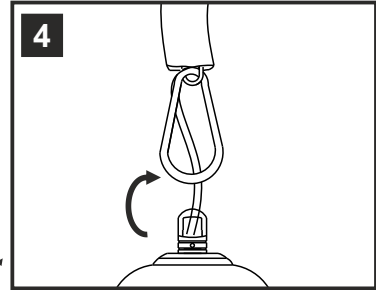
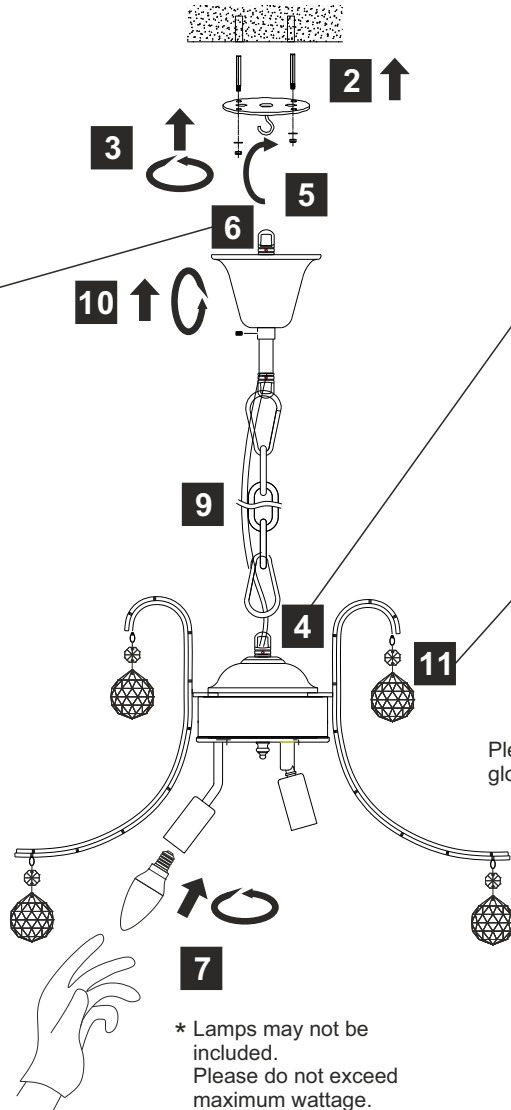
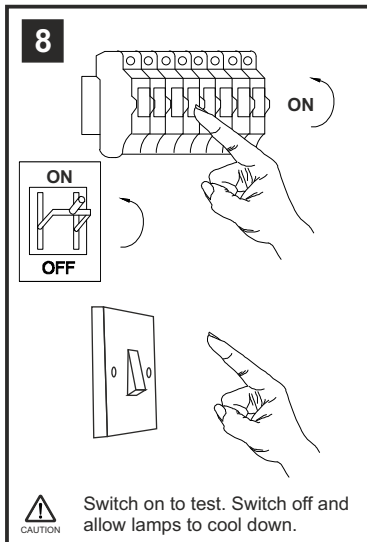
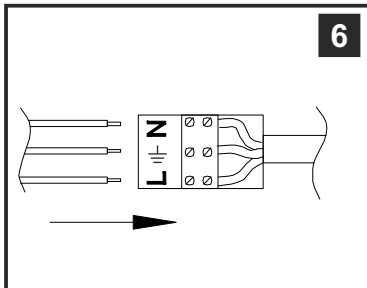
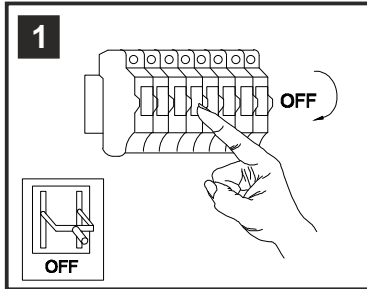


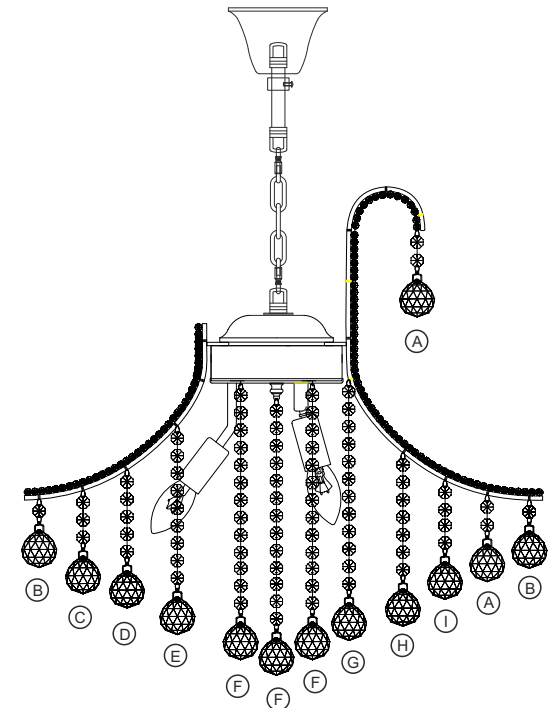
# INSTALLATION INSTRUCTIONS

(ILLUSTRATIONS ARE FOR GUIDANCE PURPOSES ONLY.  
ACTUAL PRODUCT MAY DIFFER FROM THE IMAGES SHOWN)

- ⚠ (1) Prior to installation carefully unpack and check all the components and accessories are as per details enclosed.
- (2) These instructions should be used in conjunction with the installation guidelines included.



⚠ Please use the gloves provided.



**12** For crystal installation instructions please refer to page two.

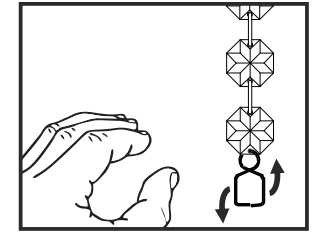
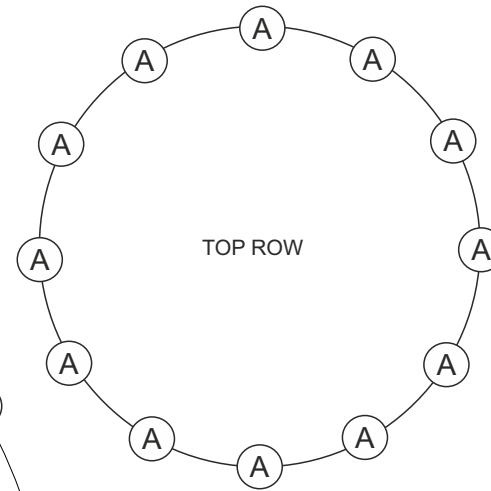
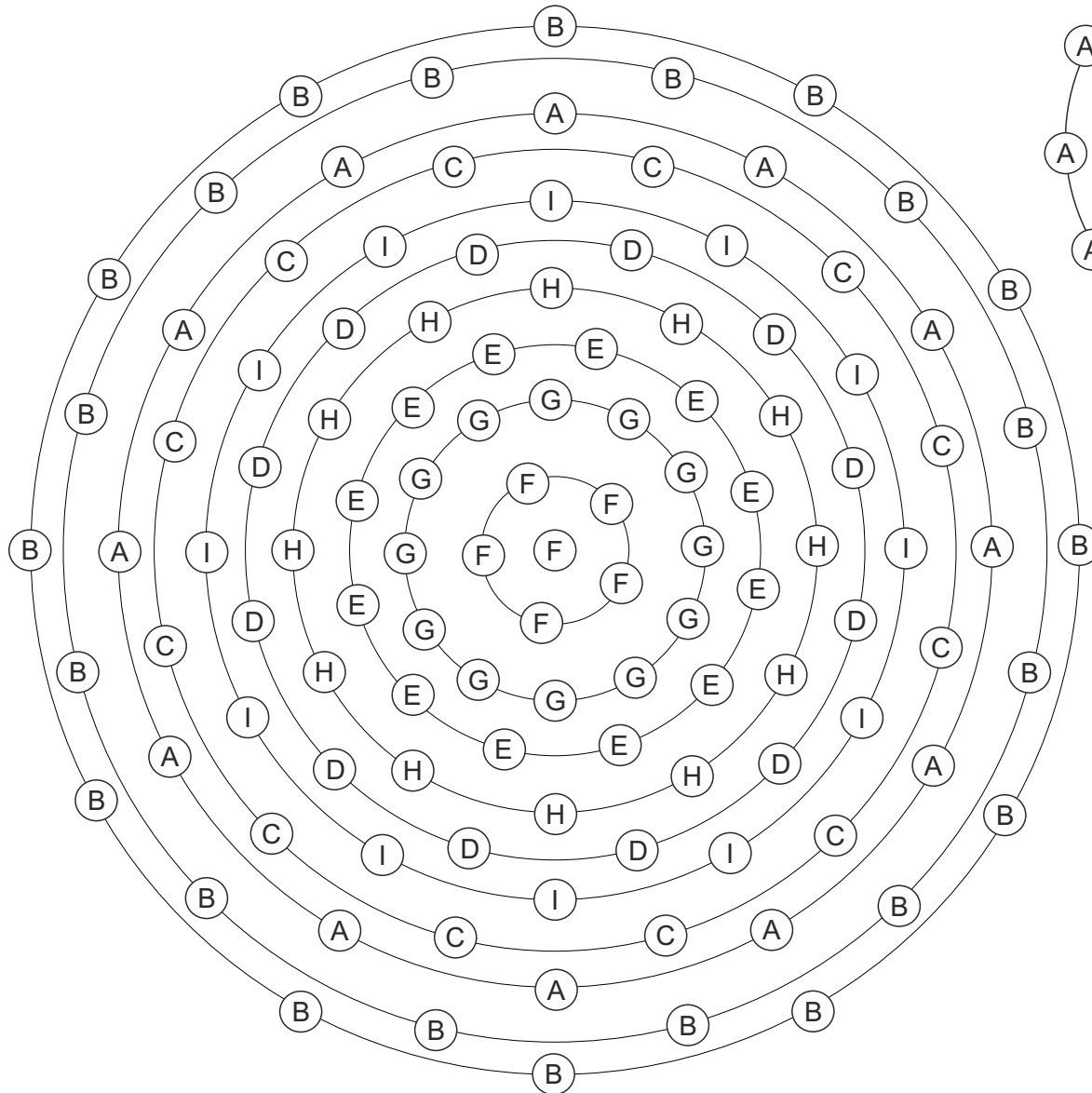
Voltage: 230V - 50/60Hz  
Lampholder: E14/SES  
Lamps: 6 x 60W Max



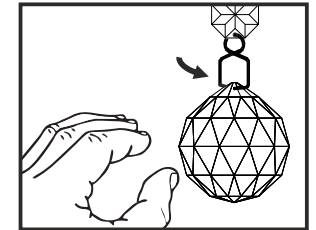
Bask IL30017 / IL30217/BA

**diy**as®

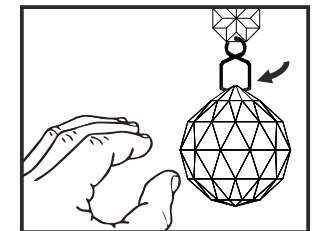
# CRYSTAL INSTALLATION INSTRUCTIONS



Gently prise the lower part of the hanging clip apart.



Insert one side of the clip into the hole at the top of the crystal.

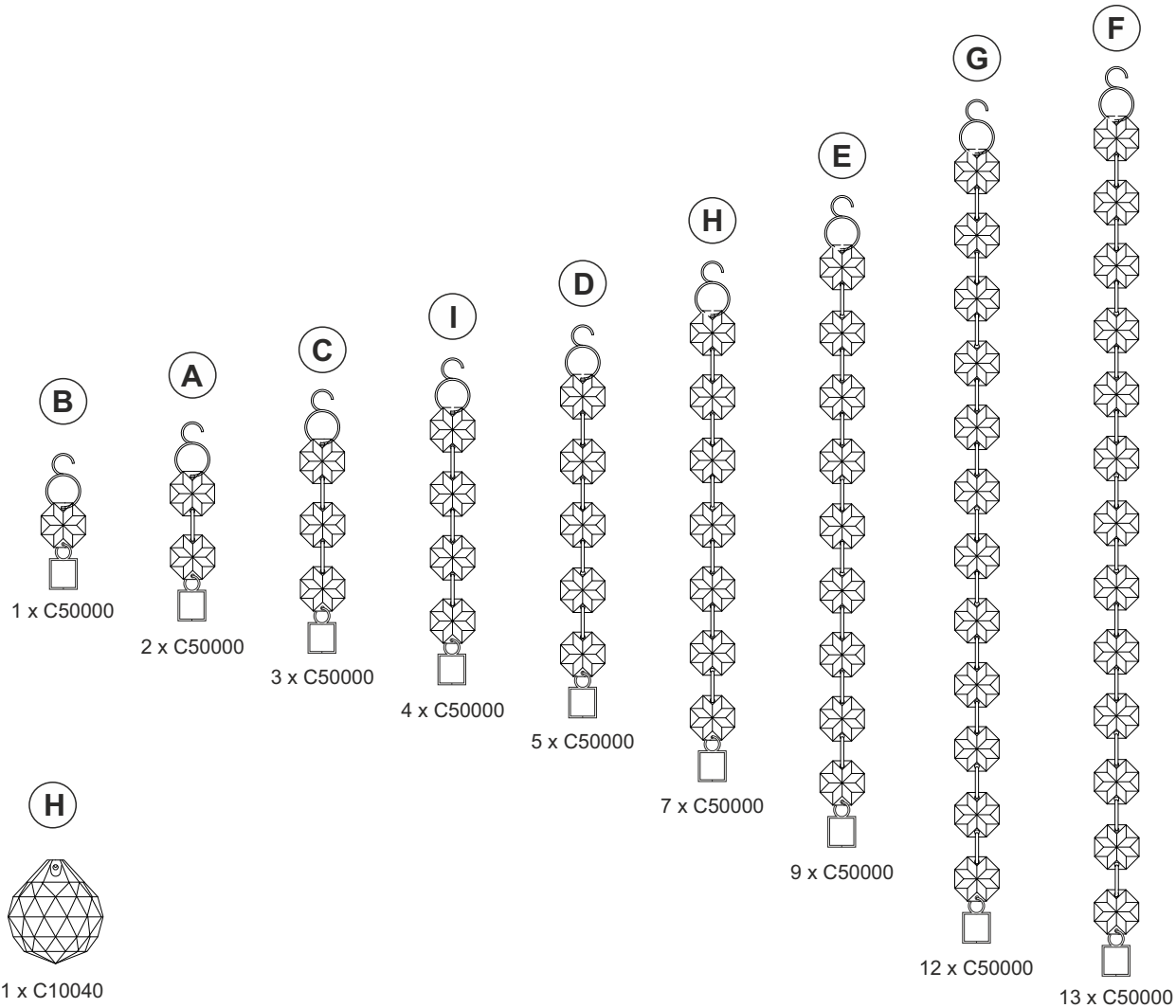


Insert the second side of the clip into the adjacent hole until the clip clicks into place.

Bask IL30017 / IL30217/BA

**diy**as®

# LIST OF COMPONENTS



## Crystal Accessories

Crystal Strand A	24 Pcs	
Crystal Strand B	24 Pcs	
Crystal Strand C	12 Pcs	
Crystal Strand D	12 Pcs	
Crystal Strand E	12 Pcs	
Crystal Strand F	6 Pcs	
Crystal Strand G	12 Pcs	
Crystal Strand H	12 Pcs	
Crystal Strand I	12 Pcs	
Crystal Ball H (40mm)	126 Pcs	

## Installation Pack

White Gloves	2 Pcs	
Installation Instructions	3 Pages	
Installation Guidelines	2 Pages	
Additional Crystal Links	5 Pcs Each	
Heavy Duty Bolts	2 Sets	

**Contents Checked By**

**Bask IL30017 / IL30217/BA**

**diyās®**