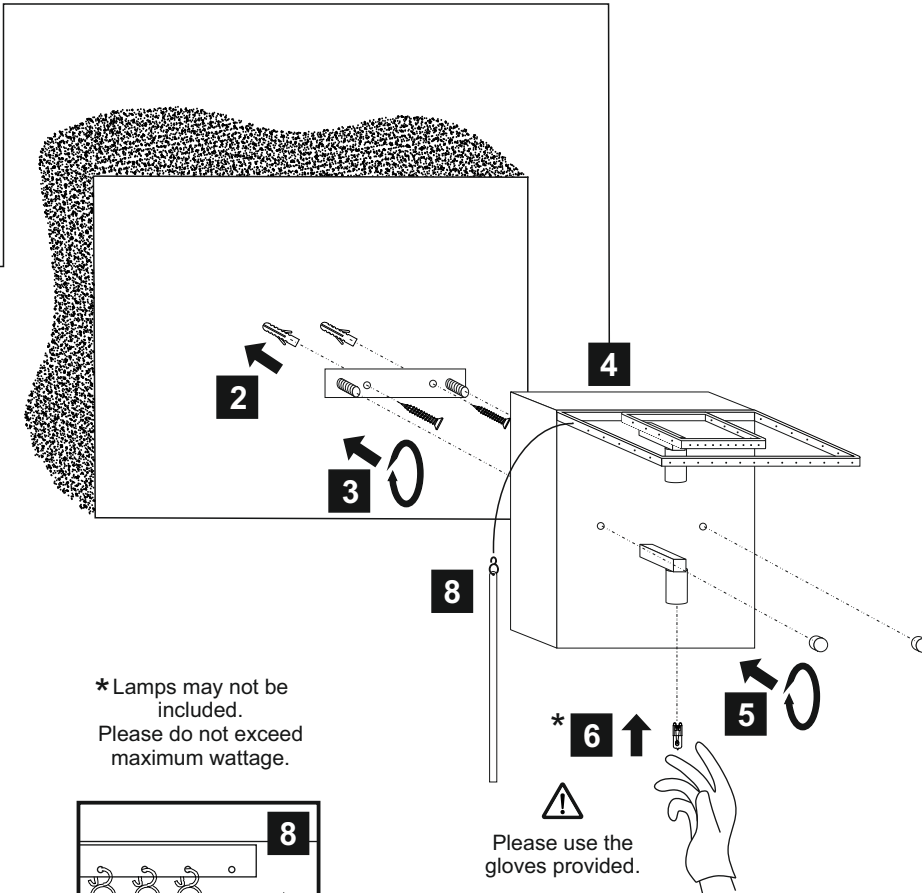
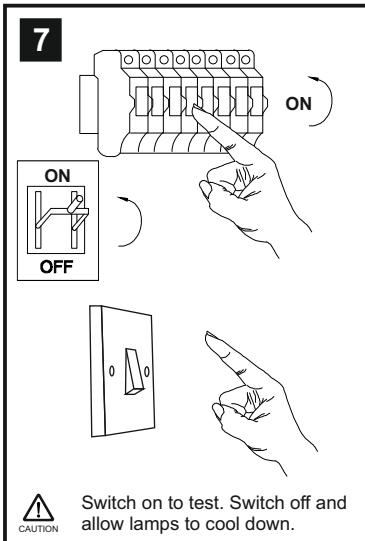
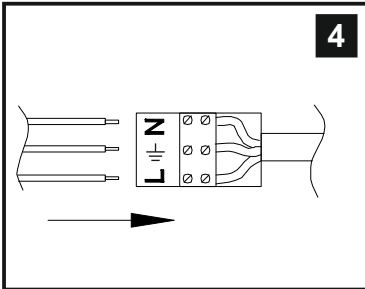
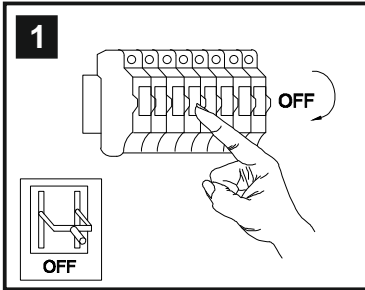


INSTALLATION INSTRUCTIONS

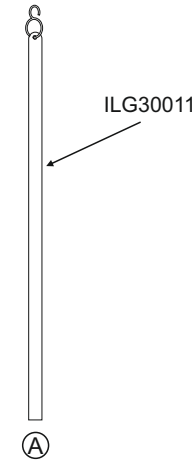
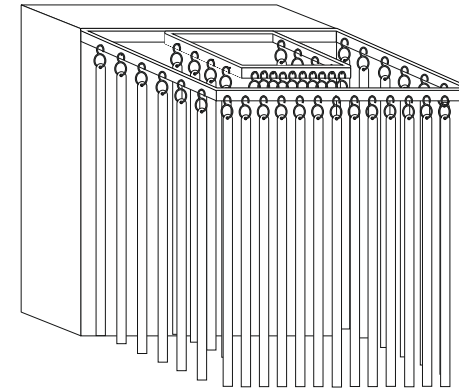
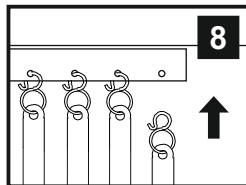
(ILLUSTRATIONS ARE FOR GUIDANCE PURPOSES ONLY.
ACTUAL PRODUCT MAY DIFFER FROM THE IMAGES SHOWN)



- (1) Prior to installation carefully unpack and check all the components and accessories are as per details enclosed.
- (2) These instructions should be used in conjunction with the installation guidelines included.



* Lamps may not be included.
Please do not exceed maximum wattage.



Accessories	
Glass Rod A	44 Pcs
Installation Pack	
White Gloves	2 Pcs
Installation Instructions	1 Page
Installation Guidelines	2 Pages
Fixing Screw & Plug	2 Sets

Contents Checked By

Voltage: 230V - 50/60Hz
Lampholder: G9
Lamps: 2 x 33W Max

COMPATIBLE
 WITH SUITABLE DIMMER/LAMP

Zanthe IL30011/G9