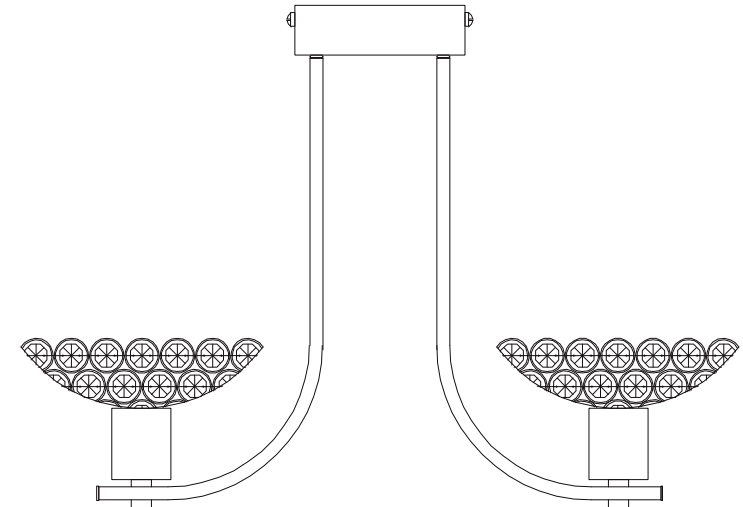
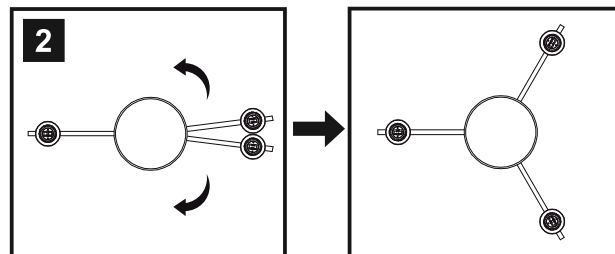
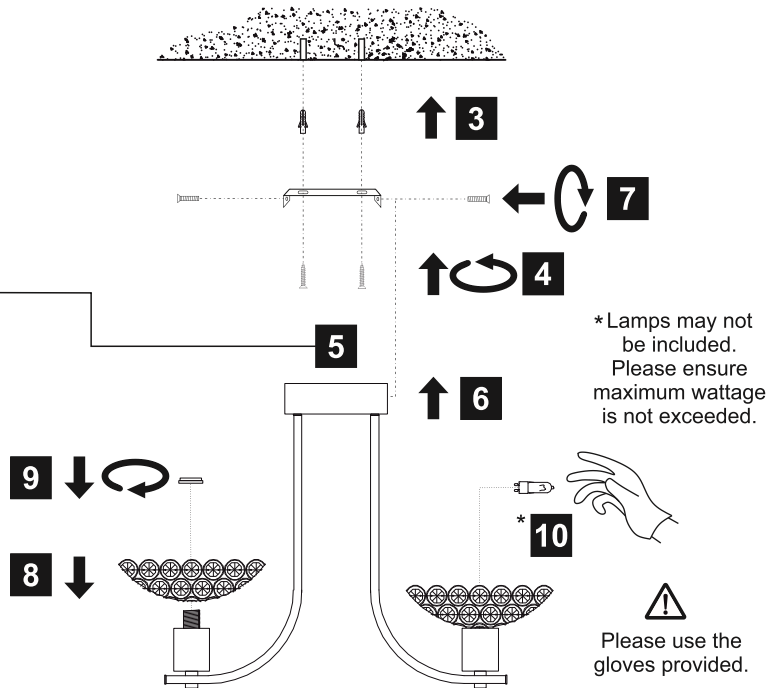
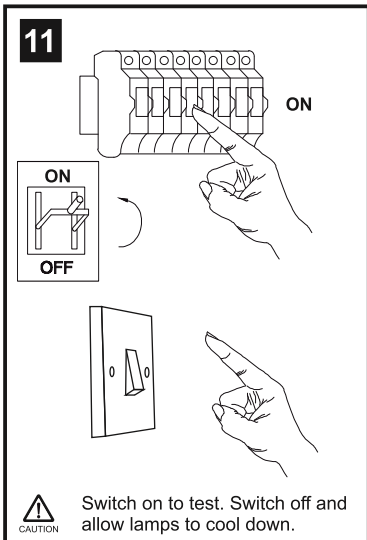
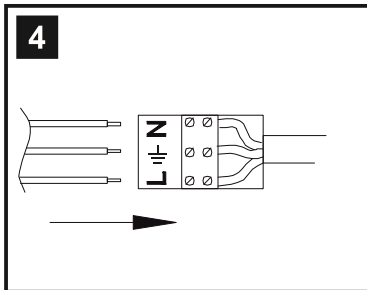
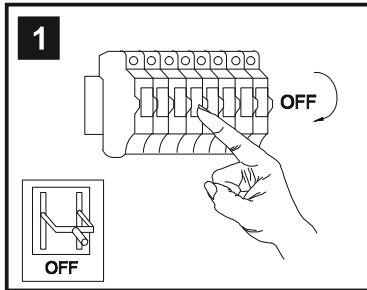


# INSTALLATION INSTRUCTIONS

(ILLUSTRATIONS ARE FOR GUIDANCE PURPOSES ONLY. ACTUAL PRODUCT MAY DIFFER FROM THE IMAGES SHOWN)



- (1) Prior to installation carefully unpack and check all the components and accessories are as per details enclosed.
- (2) These instructions should be used in conjunction with the installation guidelines included.



**Voltage:** 230V - 50/60Hz  
**Lampholder:** G9  
**Lamps:** 3 x 33W Max



COMPATIBLE



WITH SUITABLE  
LAMP/DIMMER



Ellen IL20601

**diy**as®