

# 96183 CARDILLIO 1

## General Information

Material number	96183
Type	spot
Product segment	Indoor
Theme	sonstige / nicht zuordenbar

## Dimensions

Article Width (in inch)	85
Article Length (in inch)	1585
Net Weight	2.157 Kilogram

## Material & Colour

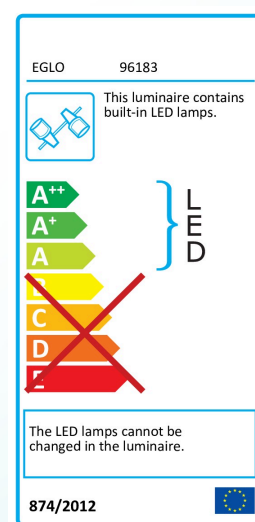
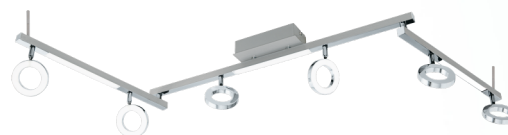
Enclosure Material	aluminium, steel
Enclosure Colour	aluminium, chrome
Glass/Shade Material	plastic
Glass/Shade Color	satined

## Functionality

Switch Type	without switch
Function	LED not replaceable
Battery	No

## Technical Information

Protection Degree	IP20
Protection Class	2
Mains Voltage	220-240V,50/60Hz



Technical changes reserved

Dimmable No

### Illuminant 1

Nominal Luminous Flux (in lm)	400
Equivalence With Incandescent Lamp (W)	35
Color Temperature	3000K warm white
Nominal Lifetime (in h)	25000
Switching Cycles	15000
Colour Rendering Index (Ra, CRI)	>80
Energy Efficiency Class	A+
Rated Lamp Power (0,1W precision)	3.2000
Color Tolerance (LED, SDCM)	<6



### Illuminant 2

Socket Type (2)	LED
Illuminant Type (2)	LED
Illuminant incl. (2)	INCLUSIVE
max. Wattage (2)	3X3,3W
Energy Efficiency Class	LED
Dimmable	No
Function	LED not replaceable

Technical changes reserved



**EGLO Leuchten GmbH**  
Heiligkreuz 22 | 6136 Pöll | Austria

Tel. +43 (0) 5242 / 6996 - 0  
Fax: +43 (0) 5242 / 6996 - 938  
[www.eglo.com](http://www.eglo.com)

my light | my style