

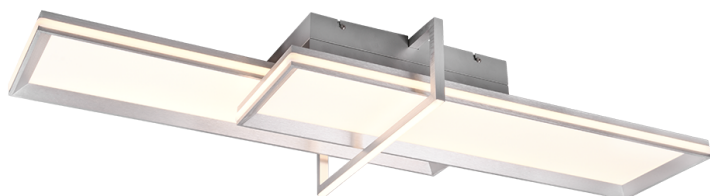


Ceiling lamp

CHARLESTON – 672110505

incl. 1x SMD LED, 22W · 1x 2600lm, 3000K

incl. 1x SMD LED, 12W · 1x 1600lm, 3000K



- Separately switchable
- Ceiling mounting
- IP20
- Not dimmable

Material construction

Metal - Brushed aluminium

Product dimensions

Width: 101cm
Height: 12cm
Depth: 38cm
Weight: 5,02kg

Technical data

Light source: SMD – LED (integrated)
Watt: 22W
Lumen: 1x 2600lm
Kelvin: 3000K
Color rendering (CRI): > 80 CRI
Lifetime: 25000H
Switching cycles: 15000x ON/OFF

Support & Download Links

[Manual](#)
[Drawing](#)
[Safety notes](#)
[Warranty Statement](#)

operating voltage: 230V ~ 50Hz
Protection grade: 2
IP classification: IP20

Dealer information

EAN Code: 4017807503982
Customs number: 94051190900

Packaging dimensions & weight

Quantities: 1
Width: 103cm
Height: 40cm
Depth: 16cm
Weight: 6,700kg