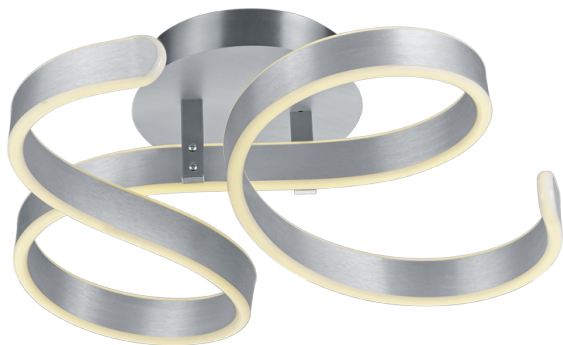




Ceiling lamp

FRANCIS – 671310105

incl. 1x SMD LED, 40W · 1x 6000lm, 3000K



- **Dimmable via switch**
- **Ceiling mounting**
- **Not suitable for external dimmer**
- **IP20**

Material construction

Metal - Brushed aluminium

Product dimensions

Width: 54cm
Height: 19cm
Depth: 52cm
Weight: 1,985kg

Technical data

Light source: SMD – LED (integrated)
Watt: 40W
Lumen: 1x 6000lm
Kelvin: 3000K
Color rendering (CRI): > 80 CRI
Lifetime: 30000H
Switching cycles: 15000x ON/OFF

Support & Download Links

[Manual](#)
[Drawing](#)
[Safety notes](#)
[Warranty Statement](#)

operating voltage: 230V ~ 50Hz
Protection grade: 1
IP classification: IP20

Dealer information

EAN Code: 4017807445329
Customs number: 94051190900

Packaging dimensions & weight

Quantities: 1
Width: 51cm
Height: 58,5cm
Depth: 23cm
Weight: 3,280kg