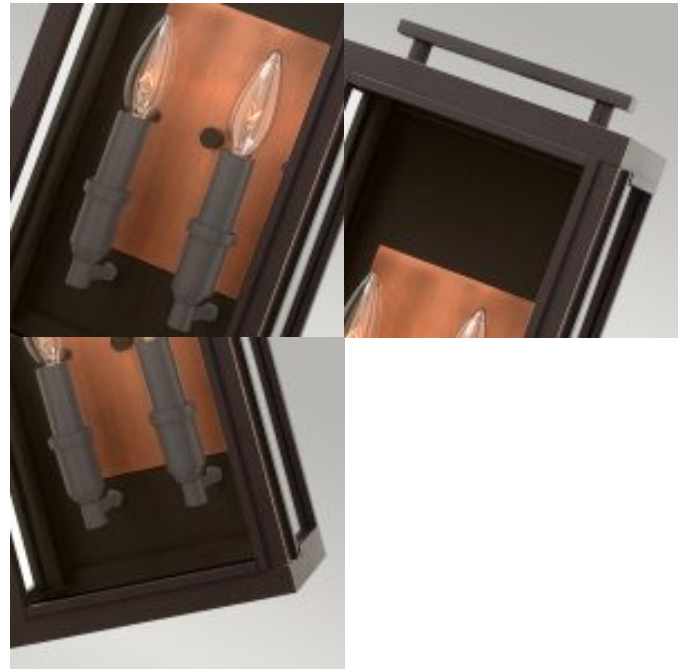


Sutcliffe 2 Light Wall Lantern – Oil Rubbed Bronze

£0.00

SKU: Sutcliffe 2 Light Wall Lantern - Oil Rubbed Bronze (QN-SUTCLIFFE-M-OZ)

Link: <https://www.elseadlighting.com/products/sutcliffe-2-light-wall-lantern-oil-rubbed-bronze/>



Product Information

Categories: Hinkley, New Arrivals, Quintiesse, Wall Lights, Exterior Lighting

Fitting Height: 431mm

Diameter: 228mm

Projection/Depth: 140mm

Finish: Oil Rubbed Bronze / Copper

Class: Class I

IP Rating: IP44

Number of lamps: 2

Maximum Wattage: 60W

Socket: E14

Lamp Included: No

Voltage: 220-240v 50hz

Energy Rating: A - E

Build Materials: Aluminium, Clear Glass

Brand: Hinkley

Family: Sutcliffe

Interior/Exterior: Exterior

Product Type: Wall Lantern

Country of Origin: PRC
Spare Glass/Shade: GS1164
Back plate Height: 292mm
Back plate Projection: 23mm
Back plate Width: 152mm
Dimensions: 30 × 23.5 × 53.5 cm
Weight: 4.6 kg

Product Description

The Sutcliffe collection conveys chic elements of early Americana styling. The candelabra lamping, clear glass and Antique Copper reflector infuse this sleek pocket lantern design constructed of solid aluminum with a perfect blend of old and new.

Elstead Lighting Ltd, Elstead House, Mill Lane, Alton Hampshire, GU34 2QJ