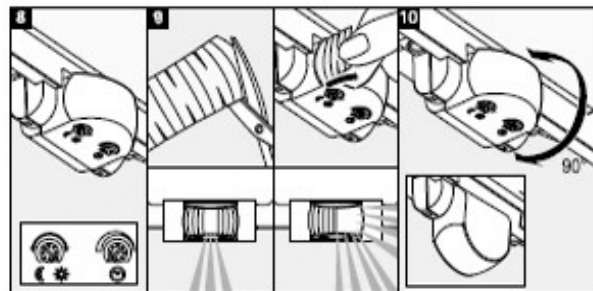
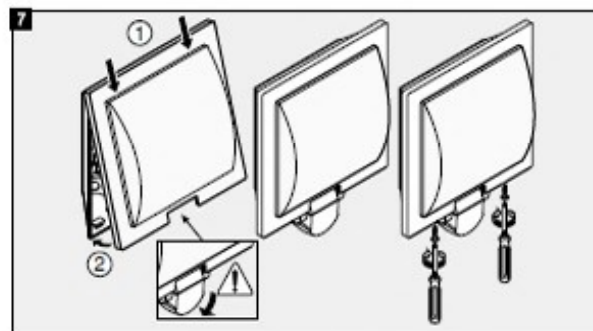
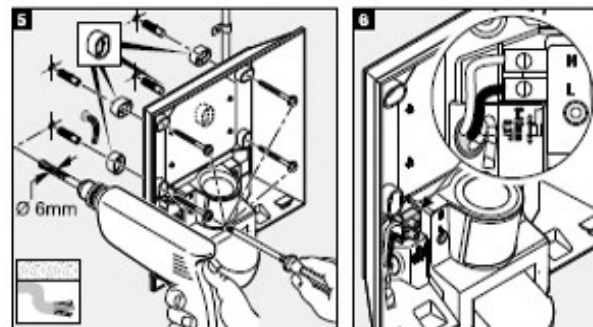
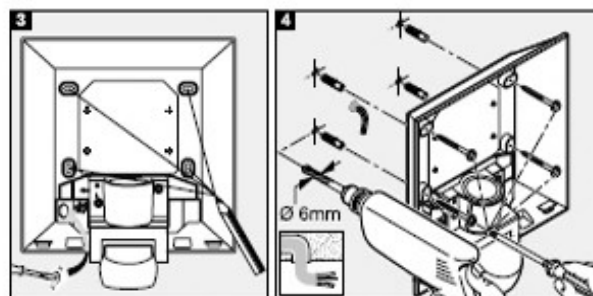
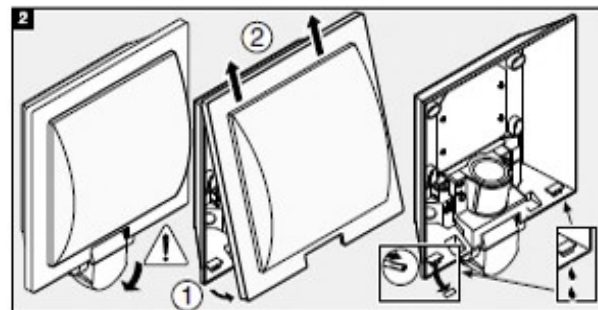
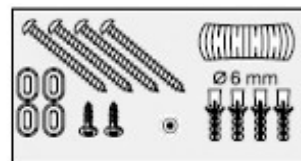


● steinel



DE	GB	FR	NL	IT	ES	PT	SE	DK	FI	NO	GR	TR
HU	CZ	SK	PL	RO	SI	HR	EE	LT	LV	RU		

↔	L 20 S: 250 x 230 x 85 mm	💡	max. 60 W / E27	L 20 S
	L 22 S: 286 x 162 x 88 mm			L 22 S
↑	L 22 M: 280 x 162 x 81 mm	☁	IP 44	
	L 22 NM: 280 x 162 x 81 mm			
🏠	2 m	☀	2-2000 Lux	L 20 S
📶	180°	🌙	2-50 LUX	L 22 S
📶	max. 10 m	🕒	8 s - 35 min	L 20 S
⚡	220-240 V, 50/60 Hz	🕒	0-7 Stunden	L 22 S
		🌡	-20 °C / +40 °C	L 22 NM



ENGLISH

GB

**Principle**

Movement triggers light. For your convenience and safety. The integrated pyroelectric infrared detector senses the invisible heat radiated from moving objects (people, animals, etc.). The heat detected in this way is converted electronically into a signal that activates the light connected. Heat radiation is not detected through obstacles, such as walls or glass, and will therefore not activate the light.

**Safety warnings**

- During installation, the electrical wiring being connected must be dead. Therefore, switch off the power first and use a voltage tester to check that the power supply is disconnected.
- Installing this light involves work on the mains voltage supply. This work must therefore be carried out by a specialist in accordance with the applicable national wiring regulations and electrical operating conditions. (DE-VDE 0100, AT-ÖVE-ÖNORM E8001-1, CH-SEV 1000)
- Only use genuine replacement parts
- Do not dismantle the light yourself. It must only be repaired by a specialist workshop.

**Installation 1 - 7** (Shown using the example of product L 20 S)

L = live conductor (usually black or brown), N = neutral conductor (usually blue), PE = any protective earth conductor (green/yellow) / Attention: Insulate any PE protective earth conductor in the power supply cable with adhesive tape.

1 Connection, concealed wiring 2 Connection with surface wiring using spacers

**Attention:** A mains switch for switching the light ON and OFF can of course be installed in the mains lead. Important: Reversing the connections may result in damage to the unit. Please note that the light must be protected by a 10 A circuit breaker.

**Function 1**

**Twilight setting (L 20 S / L 22 S)** (factory setting: daylight operation at 2000 lux):

The sensor's response threshold can be infinitely varied from 2 - 2000 lux.

Control dial set to ☀ = daylight operation at approx. 2000 lux.

Control dial set to ☾ = night-time operation at approx. 2 lux.

To adjust the detection zone in daylight, the control dial must be set to ☀ (daylight operation).

L 22 NM: 2-50 lux

**Time setting (L 20 S / L 22 S)** (factory setting: 8 sec.):

Light ON time can be adjusted continuously from 8 sec. to 35 min.

Control dial set to shortest time (8 sec.) / Control dial set to longest time (35 min.)

When setting the detection zone, it is recommended to select the shortest time.

L 22 NM Night economy mode: 0-7 hours

**Adjusting the detection zone (L 20 S / L 22 S)**

1 using adhesive shrouds, for example, to mask out paths or neighbouring premises

2 reach can be adjusted as required to between 2 and 10 m by tilting the lens 90°.

**Troubleshooting (Fault / Cause ⇨ Remedy)**

**No power / Fuse faulty, not switched ON ⇨ new fuse, turn power switch ON, check lead with voltage tester.**

**Will not switch ON / Surroundings still too bright ⇨ wait until response threshold is reached or adjust setting /**

**Bulb faulty ⇨ change bulb / Power switch OFF ⇨ switch ON**

**For sensor-switched versions only:** Detection zone not properly targeted ⇨ **readjust. Will not switch OFF /**

**Permanent movement in the detection zone ⇨ adjust detection zone. Switches ON when unwanted /**

**Detecting cars on the road, for example ⇨ change detection zone, tilt sensor down. Reach changing /**

**Differing ambient temperatures ⇨ at low temperatures, shorten reach by tilting sensor down; at high temperatures, tilt sensor up.**

**Disposal**

Electrical and electronic equipment, accessories and packaging must be recycled in an environmentally compatible manner.



Do not dispose of electrical and electronic equipment as domestic waste.

EU countries only: Under the current European Directive on Waste Electrical and Electronic Equipment and its implementation in national law, electrical and electronic equipment no longer suitable for use must be collected separately and recycled in an environmentally compatible manner.

**Functional warranty**

This STEINEL product has been manufactured with utmost care, tested for proper operation and safety in line with applicable regulations and then subjected to random sample inspection. STEINEL guarantees that it is in perfect condition and proper working order. The warranty period is 36 months and starts on the date of sale to the consumer. We will remedy defects caused by material flaws or manufacturing faults. The warranty will be met by repair or replacement of defective parts at our own discretion. The warranty shall not cover damage to wear parts, damage or defects caused by improper treatment or maintenance. Further consequential damage to other objects is excluded. Claims under the warranty shall only be accepted if the product is sent fully assembled and well packed complete with a brief description of the fault, a receipt or invoice (date of purchase and dealer's stamp) to the appropriate Service Centre. **Service:** Our Customer Service Department will repair faults not covered by warranty or after the warranty period. Please send the product well packed to your nearest Service Centre.

**Tip!**



5 min.