

INSTALLATION INSTRUCTIONS

(ILLUSTRATIONS ARE FOR GUIDANCE PURPOSES ONLY. ACTUAL PRODUCT MAY DIFFER FROM THE IMAGES SHOWN)

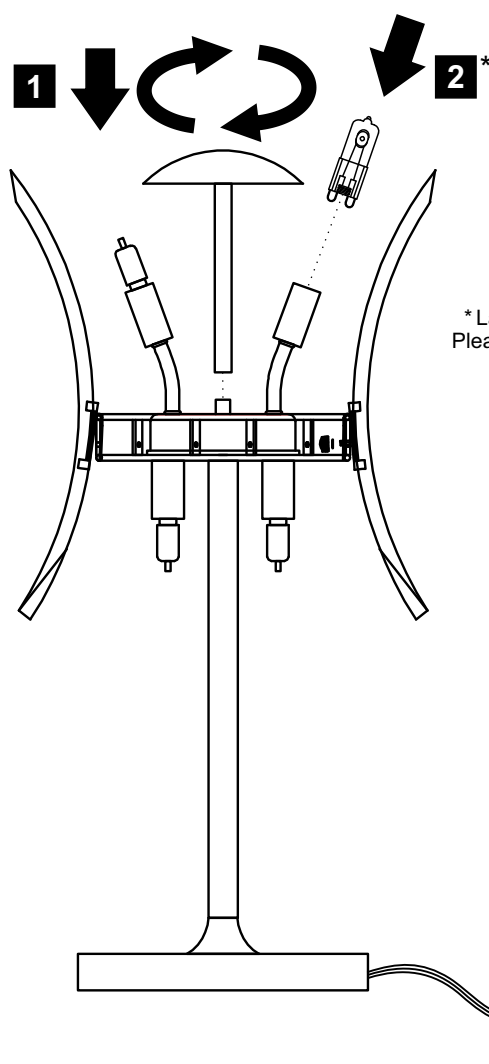
Installation Pack

White Gloves	2 Pcs	
Installation Instructions	1 Pages	
Installation Guidelines	2 Pages	

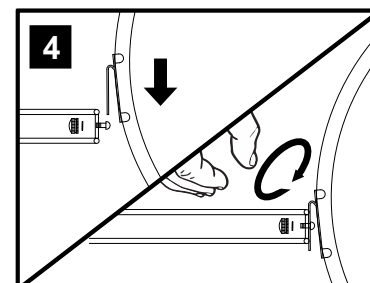
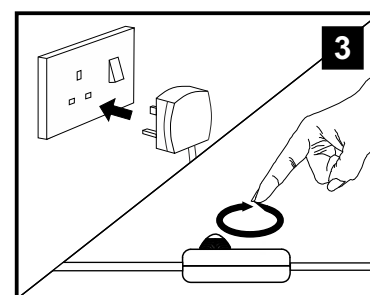
Contents Checked By



Please use the gloves provided.



* Lamps may not be included.
Please ensure maximum wattage
is not exceeded.



(1) Prior to installation carefully unpack and check all the components and accessories are as per details enclosed.

(2) These instructions should be used in conjunction with the installation guidelines included.

Voltage: 230V - 50/60Hz
Lampholder: G9
Lamps: 4 x 33W Max



Sinclair IL50446

diyas®