

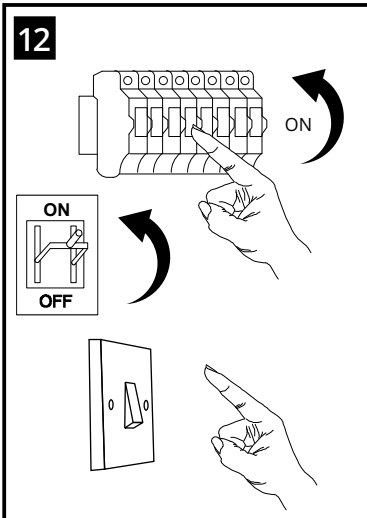
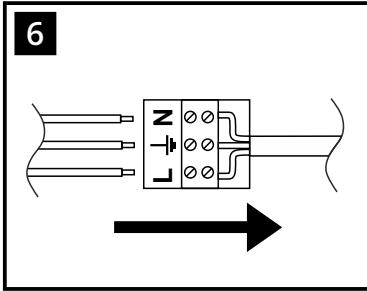
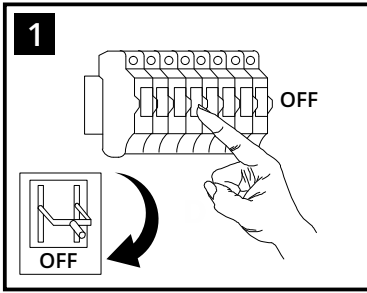
# INSTALLATION INSTRUCTIONS

(ILLUSTRATIONS ARE FOR GUIDANCE PURPOSES ONLY.  
ACTUAL PRODUCT MAY DIFFER FROM THE IMAGES SHOWN)



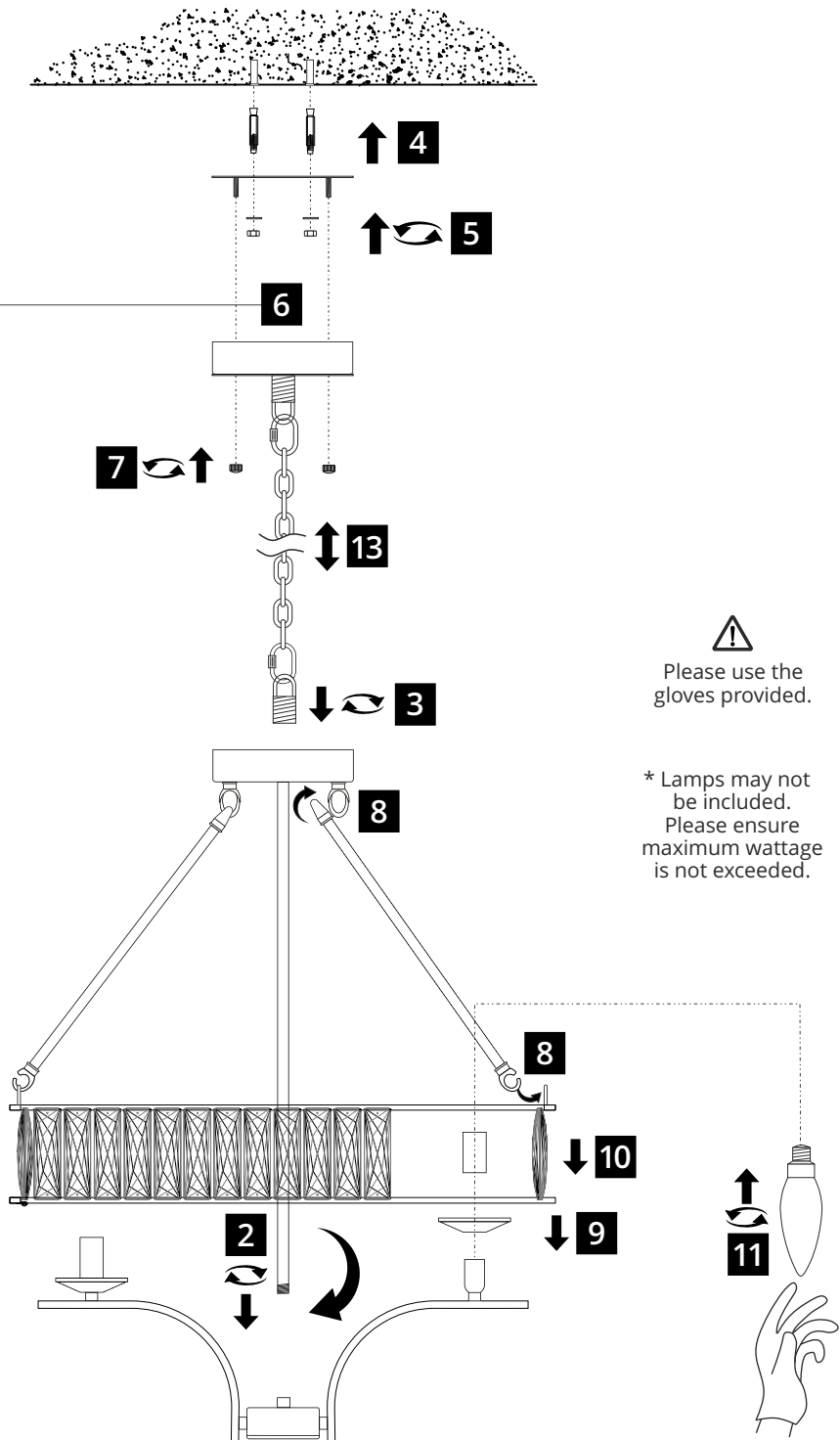
(1) Prior to installation carefully unpack and check all the components and accessories are as per details enclosed.

(2) These instructions should be used in conjunction with the installation guidelines included.



⚠ Switch on to test. Switch off and allow lamps to cool down.

For conversion to semi-flush see page 2.



⚠ Please use the gloves provided.

\* Lamps may not be included. Please ensure maximum wattage is not exceeded.

Voltage: 220-240V~50/60Hz  
Lampholder: E14/SES  
Lamps: 4 x LED 20W Max

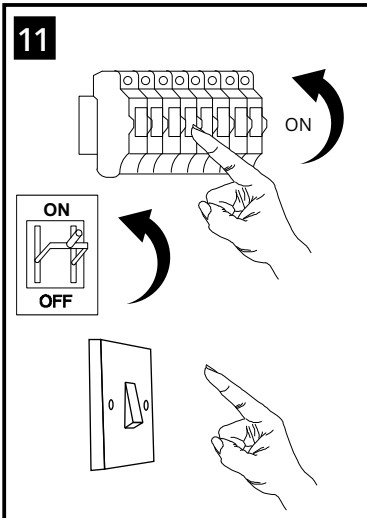
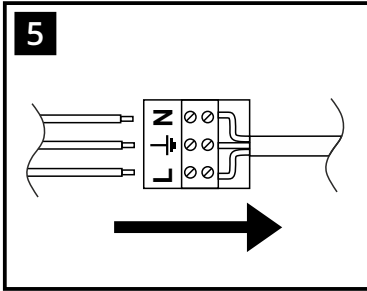
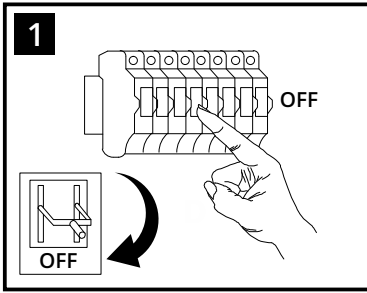
# INSTALLATION INSTRUCTIONS

(ILLUSTRATIONS ARE FOR GUIDANCE PURPOSES ONLY.  
ACTUAL PRODUCT MAY DIFFER FROM THE IMAGES SHOWN)

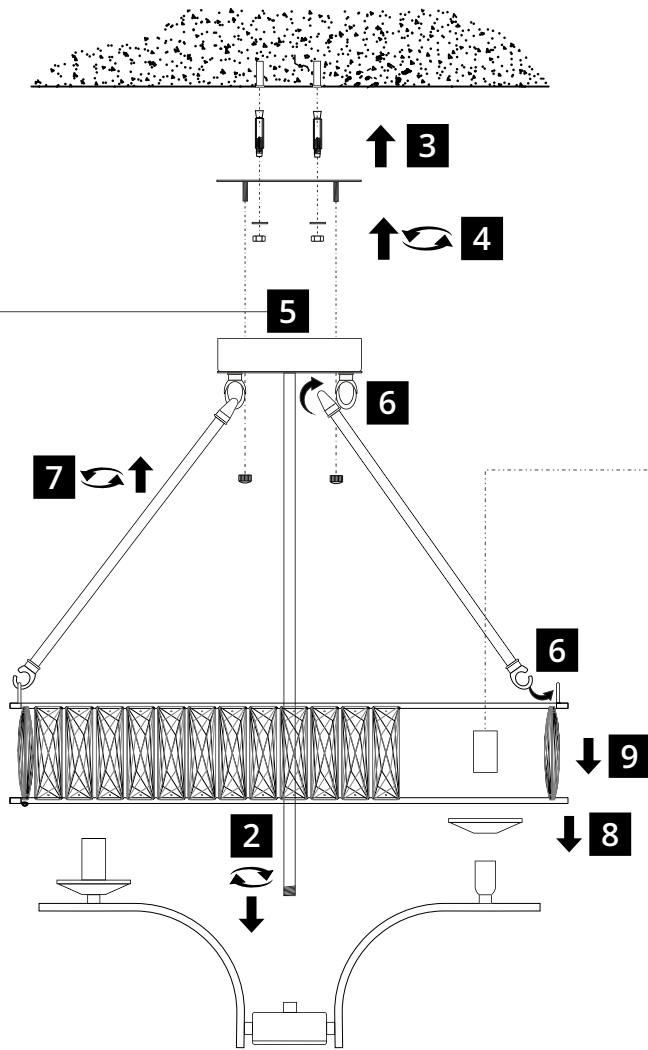


(1) Prior to installation carefully unpack and check all the components and accessories are as per details enclosed.

(2) These instructions should be used in conjunction with the installation guidelines included.



Switch on to test. Switch off and allow lamps to cool down.



Please use the gloves provided.

\* Lamps may not be included. Please ensure maximum wattage is not exceeded.

**Voltage:** 220-240V~50/60Hz  
**Lampholder:** E14/SES  
**Lamps:** 4 x LED 20W Max

**UK CA**

WITH SUITABLE LAMP/DIMMER

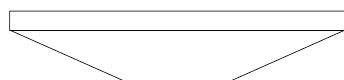
# INSTALLATION INSTRUCTIONS

(ILLUSTRATIONS ARE FOR GUIDANCE PURPOSES ONLY.  
ACTUAL PRODUCT MAY DIFFER FROM THE IMAGES SHOWN)

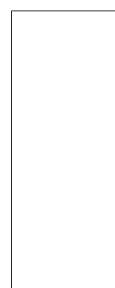


(1) Prior to installation carefully unpack and check all the components and accessories are as per details enclosed.

(2) These instructions should be used in conjunction with the installation guidelines included.



**a**



**b**

## Installation Accessories

Crystal Sconce a	4 Pcs	
Lampholder Sleeve b	4 Pcs	

## Installation Pack

Installation Instructions	3 Pages	
Installation Guidelines	2 Pages	
Fixing Screw & Plugs	2 Sets	
White Gloves	1 Pair	

Contents  
Checked by