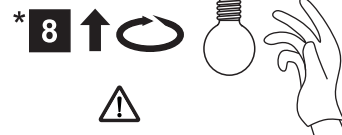
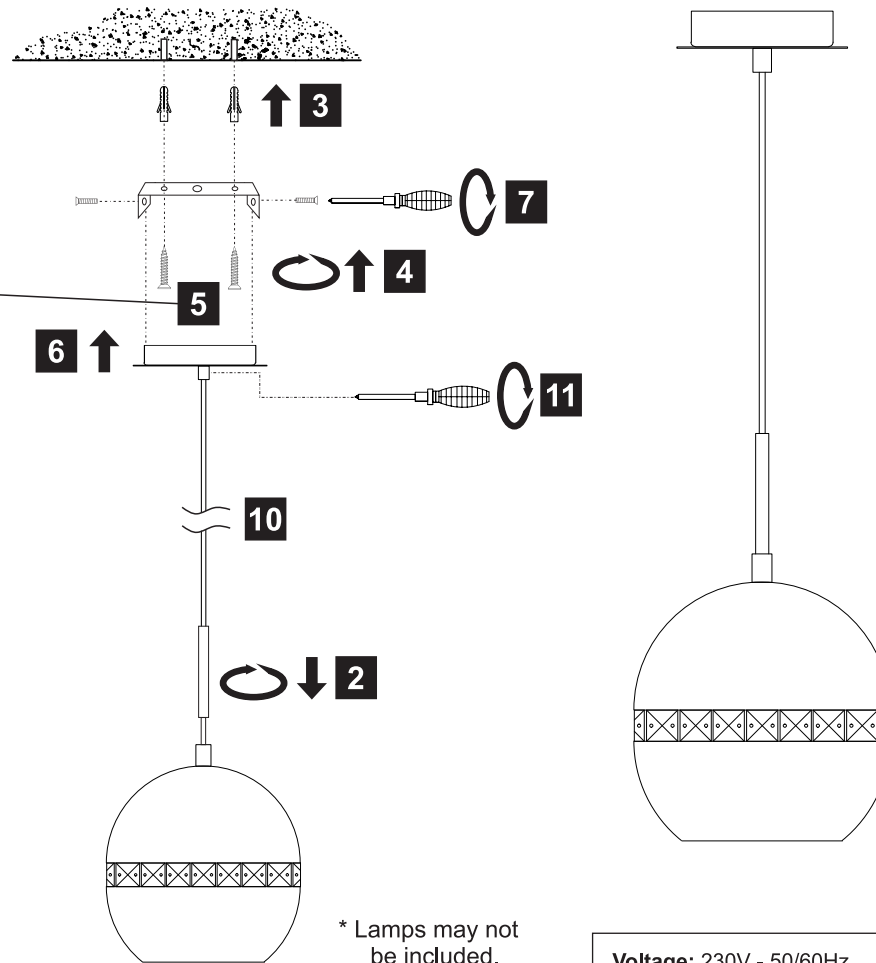
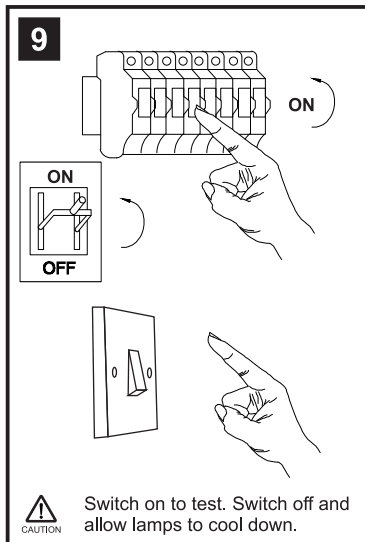
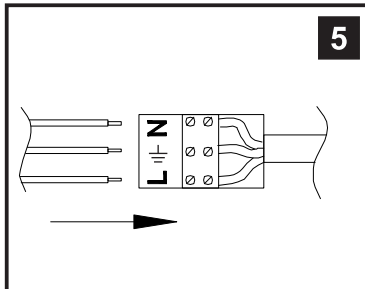
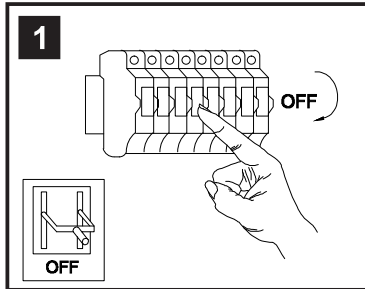


INSTALLATION INSTRUCTIONS

(ILLUSTRATIONS ARE FOR GUIDANCE PURPOSES ONLY.
ACTUAL PRODUCT MAY DIFFER FROM THE IMAGES SHOWN)



- (1) Prior to installation carefully unpack and check all the components and accessories are as per details enclosed.
- (2) These instructions should be used in conjunction with the installation guidelines included.



Please use the gloves provided.

* Lamps may not be included. Please ensure maximum wattage is not exceeded.

Voltage: 230V - 50/60Hz
Lampholder: ES/E27
Lamps: 1 x 60W Max



Installation Pack		
White Gloves	2 Pcs	
Installation Instructions	1 Page	
Installation Guidelines	2 Pages	
Fixing Screw & Plug	2 Sets	

Contents Checked By	

Andrea IL31610/IL31612

diyas®