

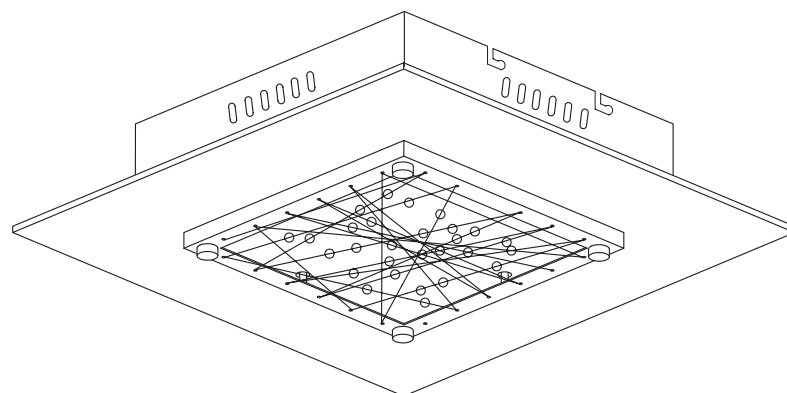
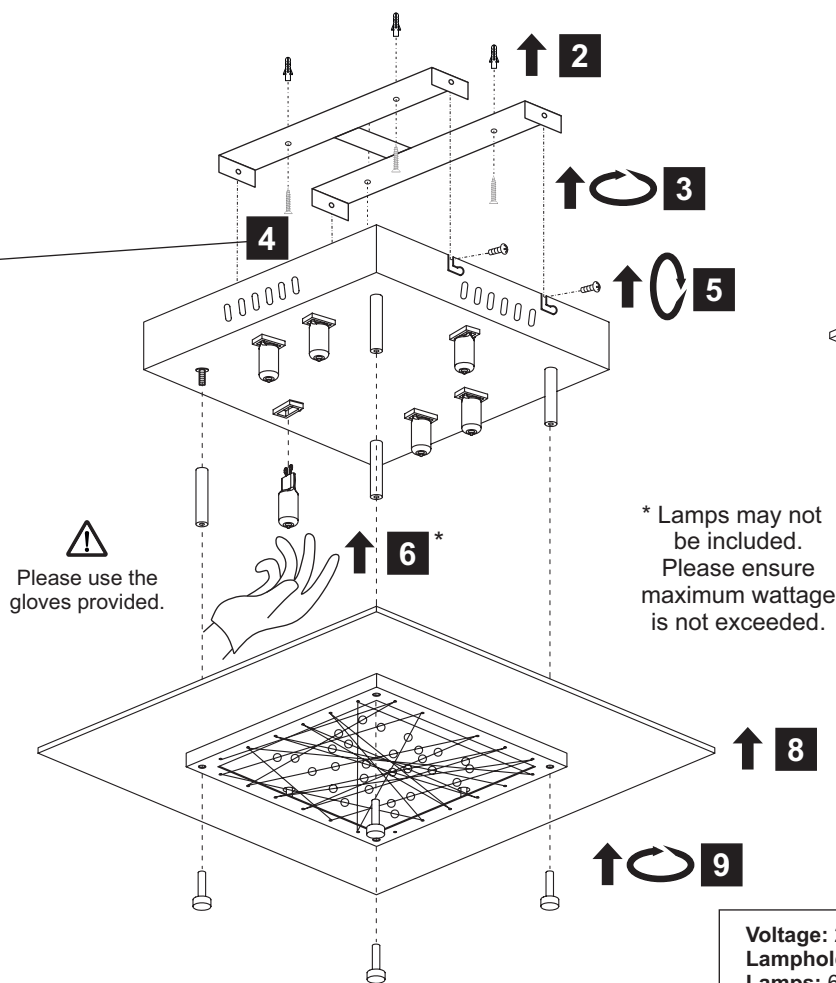
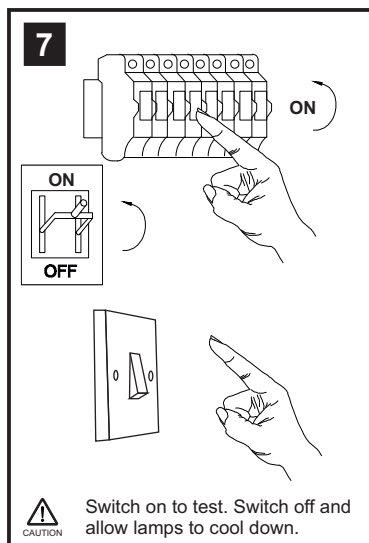
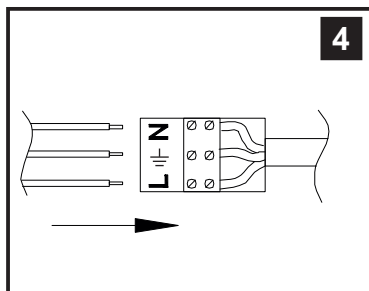
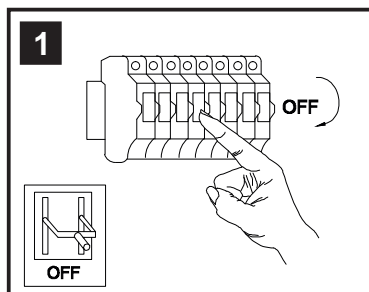
INSTALLATION INSTRUCTIONS

(ILLUSTRATIONS ARE FOR GUIDANCE PURPOSES ONLY.
ACTUAL PRODUCT MAY DIFFER FROM THE IMAGES SHOWN)



(1) Prior to installation carefully unpack and check all the components and accessories are as per details enclosed.

(2) These instructions should be used in conjunction with the installation guidelines included.



Installation Pack

White Gloves	2 Pcs	
Installation Instructions	1 Page	
Installation Guidelines	2 Pages	
Fixing Screw & Plug	2 Sets	

Lindon IL31310

diyas®

Contents
Checked By

Voltage: 230V - 50/60Hz
Lampholder: G9
Lamps: 6 x 33W Max



LED
COMPATIBLE



CE



WITH SUITABLE
DIMMER/LAMP

