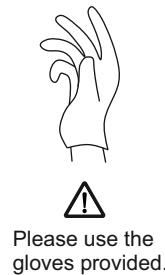
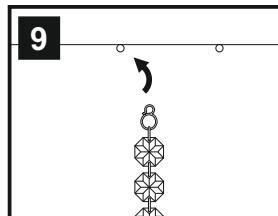
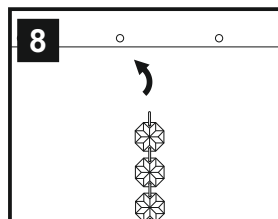
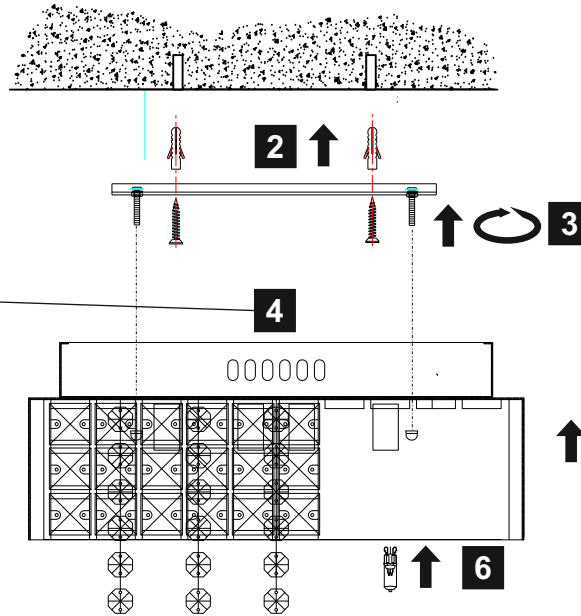
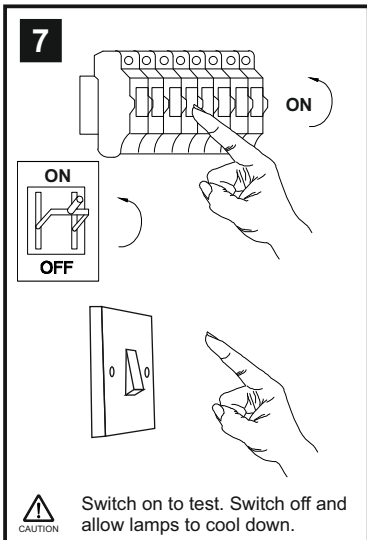
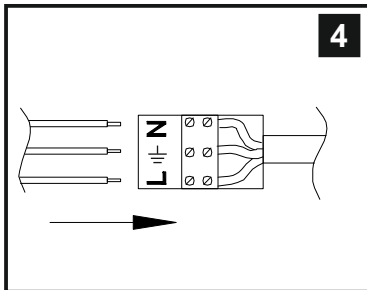
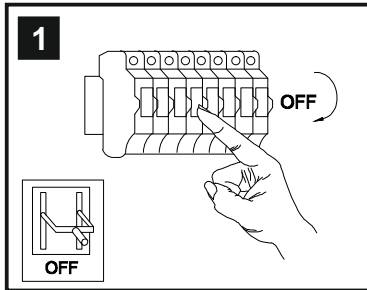


INSTALLATION INSTRUCTIONS

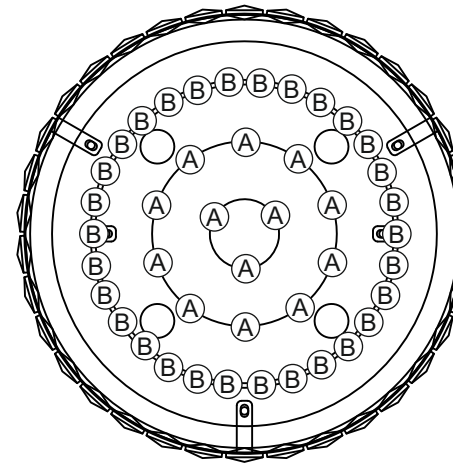
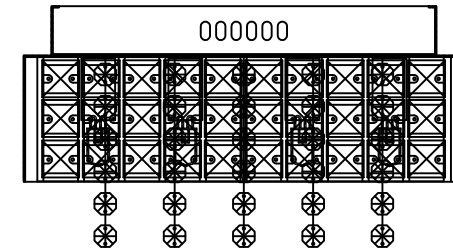
(ILLUSTRATIONS ARE FOR GUIDANCE PURPOSES ONLY.
ACTUAL PRODUCT MAY DIFFER FROM THE IMAGES SHOWN)



- (1) Prior to installation carefully unpack and check all the components and accessories are as per details enclosed.
- (2) These instructions should be used in conjunction with the installation guidelines included.



* Lamps may not be included.
Please ensure maximum wattage is not exceeded.



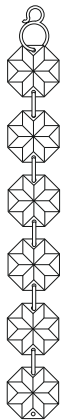
Voltage: 220-240V 50/60Hz
Lampholder: G9
Lamps: 4 x 33W Max



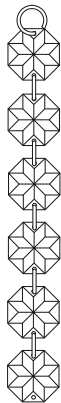
Edison IL31150

diyas

LIST OF COMPONENTS



A



B

Crystal Accessories

Crystal Strand A	13 Pcs	
Crystal Strand B	30 Pcs	

Installation Pack

White Gloves	2 Pcs	
Installation Instructions	2 Pages	
Installation Guidelines	2 Pages	
Fixing Screw and Plug	4 Sets	

Contents Checked By

Edison IL31150

