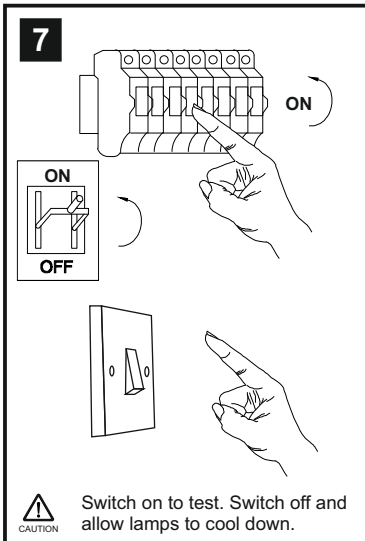
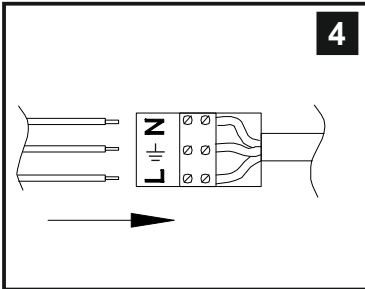
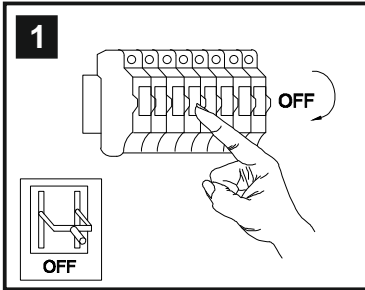


INSTALLATION INSTRUCTIONS

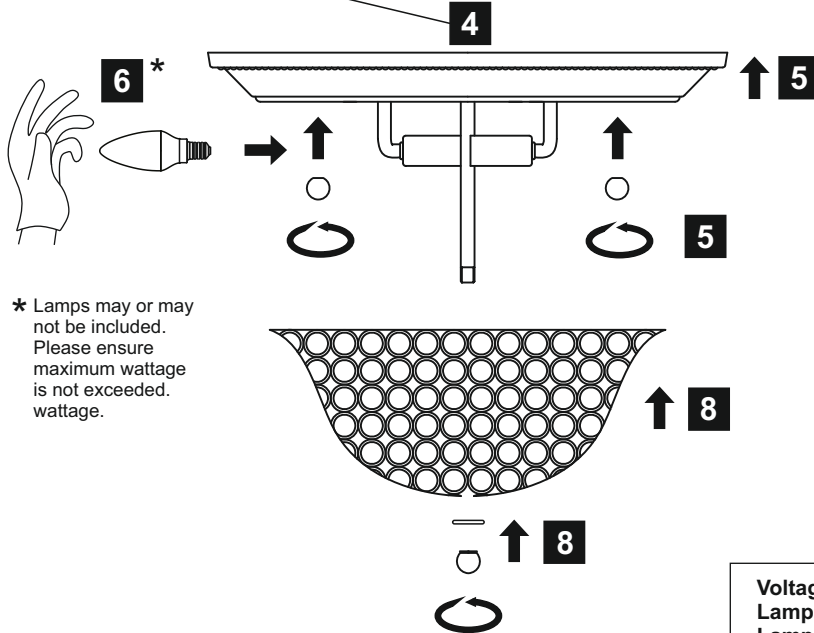
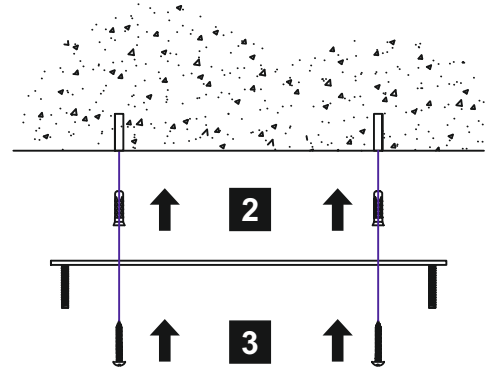
(ILLUSTRATIONS ARE FOR GUIDANCE PURPOSES ONLY.
ACTUAL PRODUCT MAY DIFFER FROM THE IMAGES SHOWN)



- (1) Prior to installation carefully unpack and check all the components and accessories are as per details enclosed.
- (2) These instructions should be used in conjunction with the installation guidelines included.

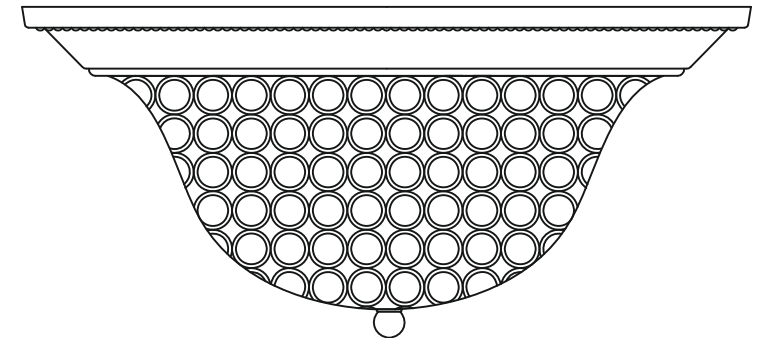


CAUTION Switch on to test. Switch off and allow lamps to cool down.



* Lamps may or may not be included. Please ensure maximum wattage is not exceeded.

Installation Pack		
White Gloves	2 Pcs	
Installation Instructions	1 Page	
Installation Guidelines	2 Pages	
Fixing Screws & Plugs	2 Sets	
Contents Checked By		



Voltage: 230V - 50/60Hz
Lampholder: SES/E14
Lamps: 2 x 40W Max

Paloma IL31131 / IL31134