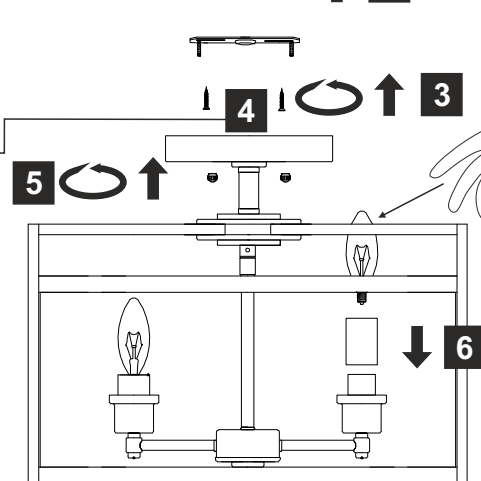
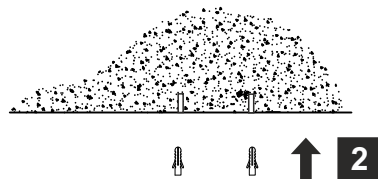
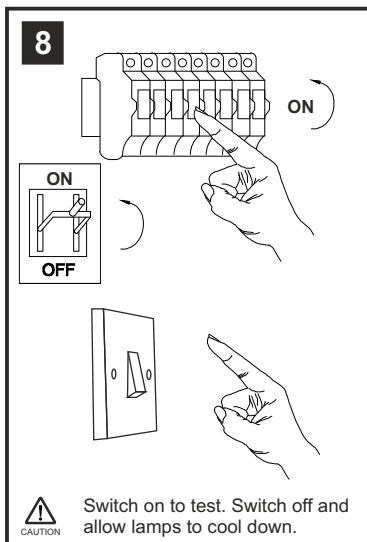
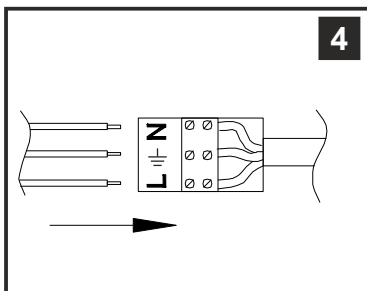
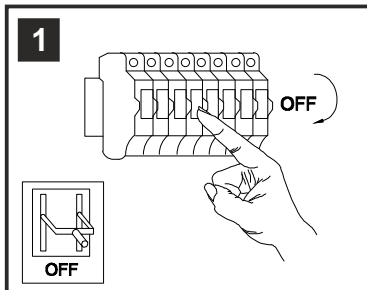


INSTALLATION INSTRUCTIONS

(ILLUSTRATIONS ARE FOR GUIDANCE PURPOSES ONLY.
ACTUAL PRODUCT MAY DIFFER FROM THE IMAGES SHOWN)



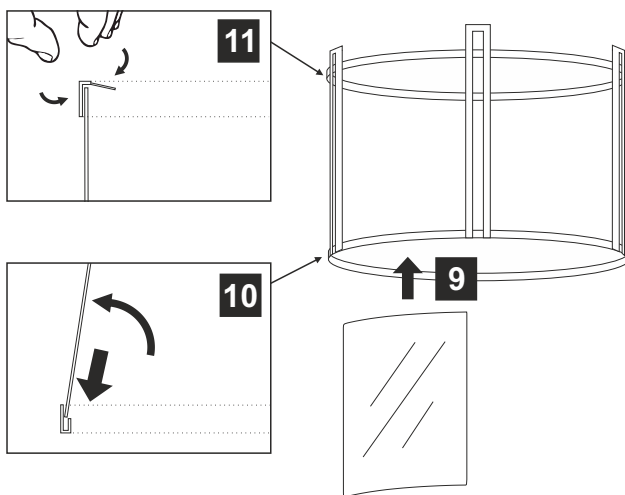
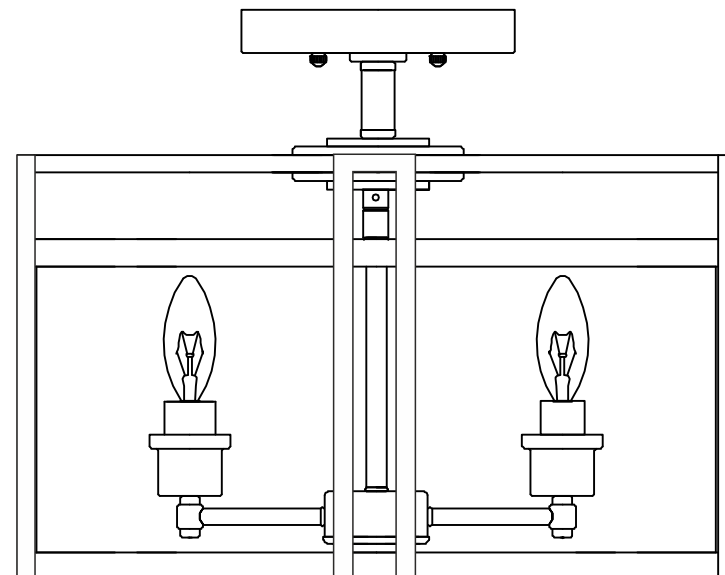
- (1) Prior to installation carefully unpack and check all the components and accessories are as per details enclosed.
- (2) These instructions should be used in conjunction with the installation guidelines included.



Please use the gloves provided.

*Lamps may not be included.

Please do not exceed maximum wattage.



Voltage: 230V - 50/60Hz
Lampholder: E14/SES
Lamps: 3 x 60W Max



COMPATIBLE



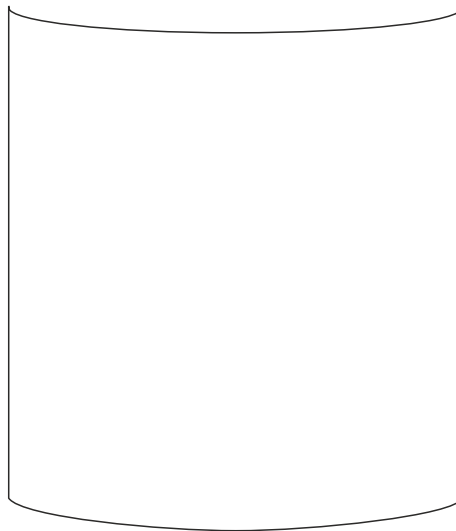
WITH SUITABLE
LAMP/DIMMER



Eaton IL31080 / IL31090

diyas

LIST OF COMPONENTS



ILG31090

Accessories

Shade Glass	4 Pcs	

Installation Pack

White Gloves	2 Pcs	
Installation Instructions	2 Pages	
Installation Guidelines	2 Pages	
Fixing Screw and Plug	2 Sets	

Contents Checked By

Eaton IL31080 / IL31090

diyās®