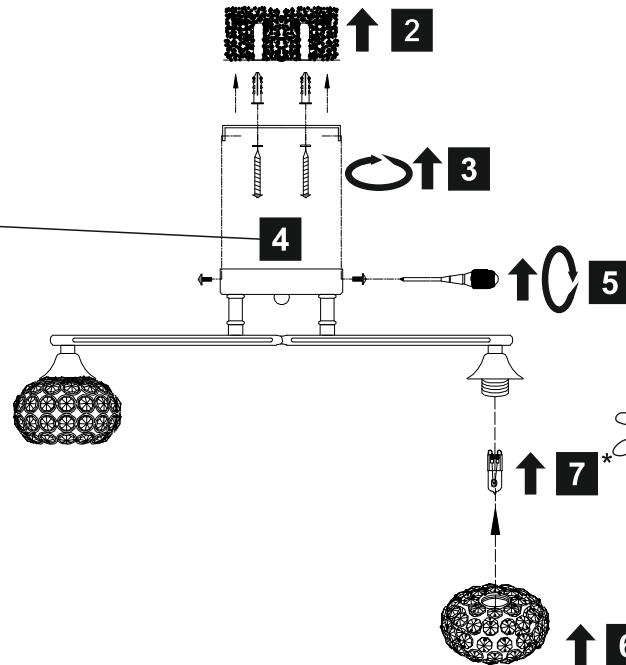
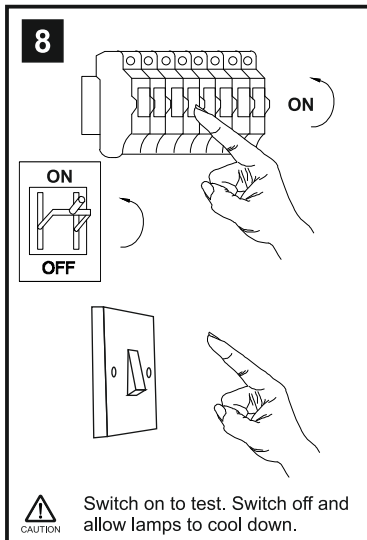
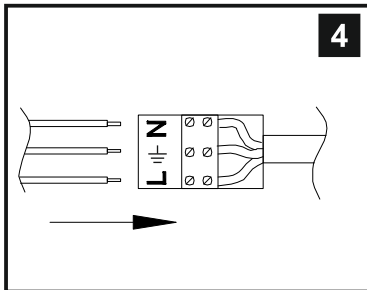
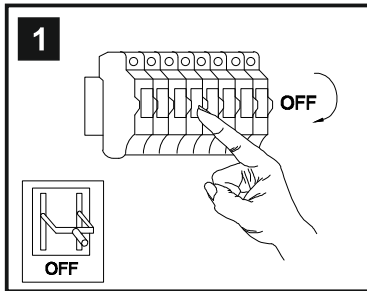


INSTALLATION INSTRUCTIONS

(ILLUSTRATIONS ARE FOR GUIDANCE PURPOSES ONLY.
ACTUAL PRODUCT MAY DIFFER FROM THE IMAGES SHOWN)



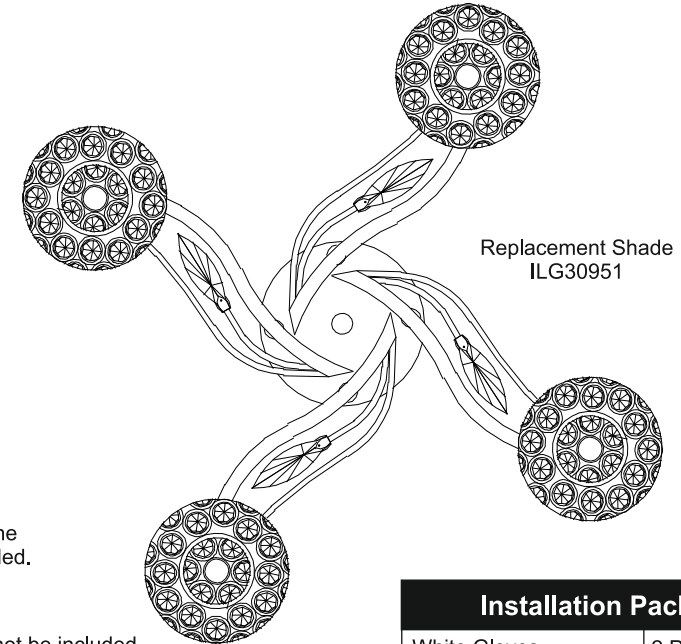
- (1) Prior to installation carefully unpack and check all the components and accessories are as per details enclosed.
- (2) These instructions should be used in conjunction with the installation guidelines included.



Please use the gloves provided.

* Lamps may not be included.

Please ensure maximum wattage is not exceeded.



Replacement Shade
ILG30951

Installation Pack

White Gloves	2 Pcs	
Installation Instructions	1 Page	
Installation Guidelines	2 Pages	
Fixing Screw & Plug	2 Set	
Extra Pin	2 Pc	

Contents Checked By

Voltage: 230V - 50/60Hz
Lampholder: G9
Lamps: 4 x 33W Max



COMPATIBLE



WITH SUITABLE
DIMMER/LAMP



Leimo IL30954

diyas®