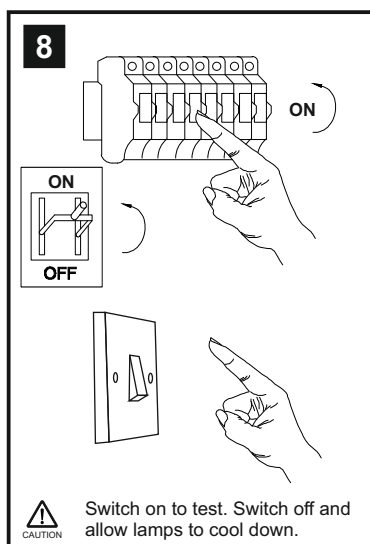
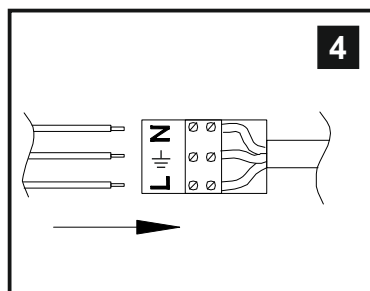
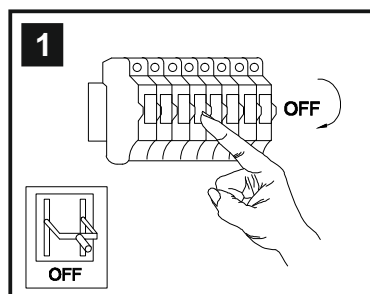


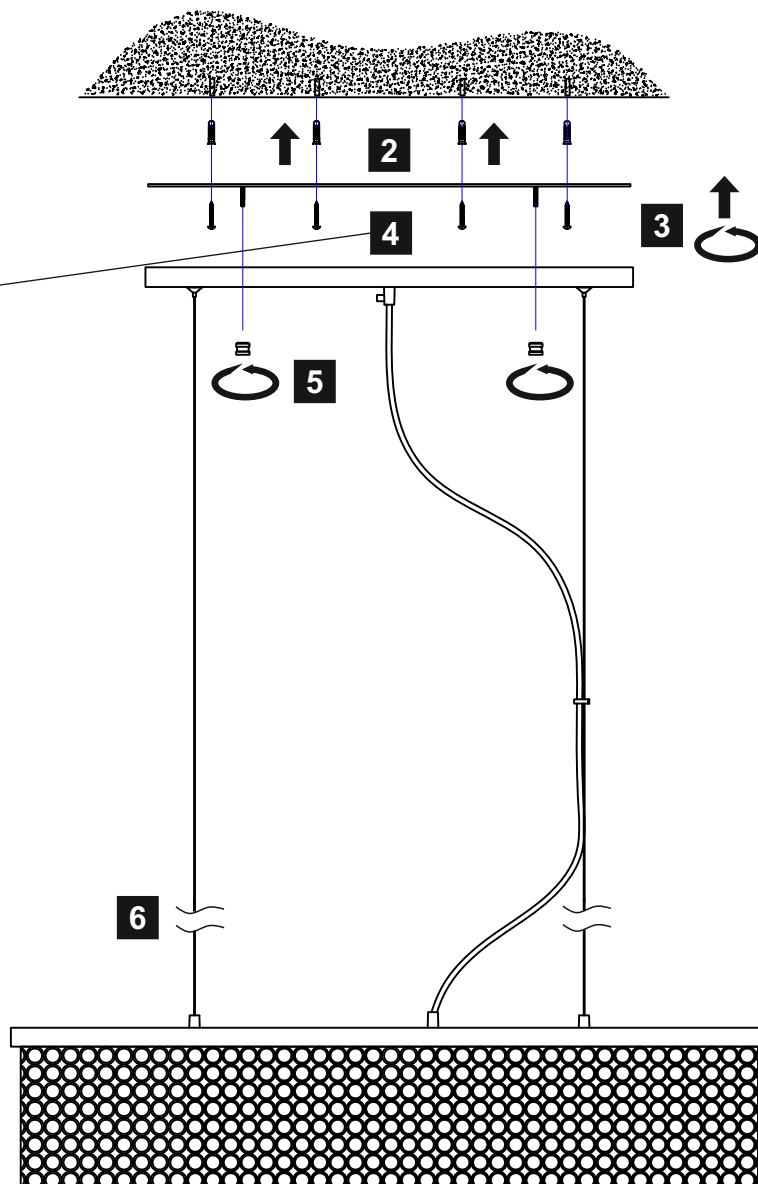
# INSTALLATION INSTRUCTIONS

(ILLUSTRATIONS ARE FOR GUIDANCE PURPOSES ONLY. ACTUAL PRODUCT MAY DIFFER FROM THE IMAGES SHOWN)



Installation Pack		
White Gloves	2 Pcs	
Installation Instructions	1 Page	
Installation Guidelines	2 Pages	
Fixing Screws & Plugs	2 Sets	

Contents Checked By	
---------------------	--



⚠ Please use the gloves provided.

\* Lamps may not be included. Please ensure maximum wattage is not exceeded.

- ⚠ (1) Prior to installation carefully unpack and check all the components and accessories are as per details enclosed.
- (2) These instructions should be used in conjunction with the installation guidelines included.

Voltage: 230V - 50/60Hz  
Lampholder: G9  
Lamps: 9 x 33W Max



COMPATIBLE

WITH SUITABLE DIMMER/LAMP



Piazza IL30434

**diyas**