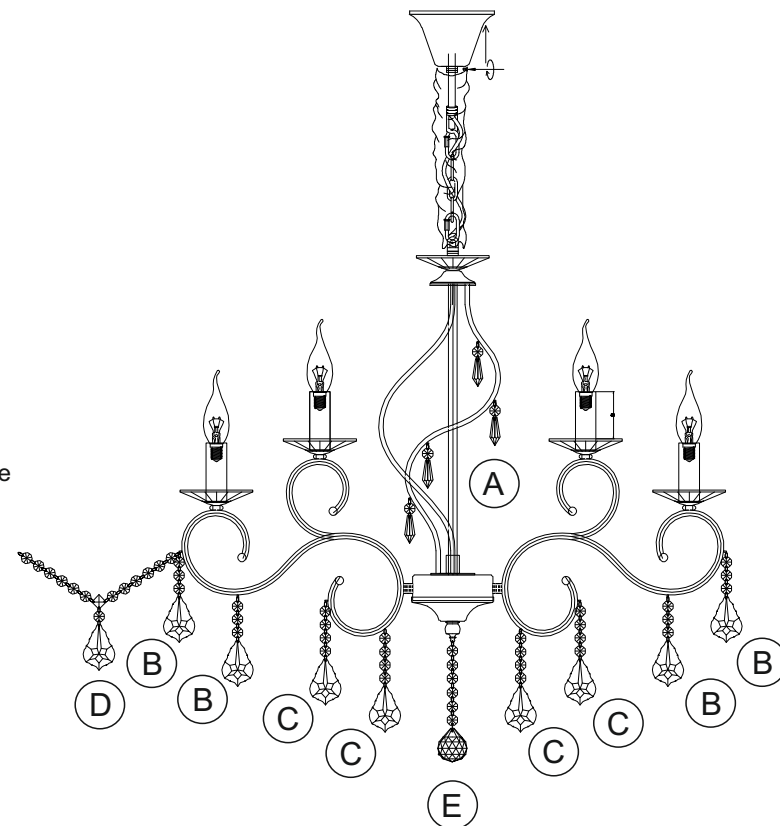
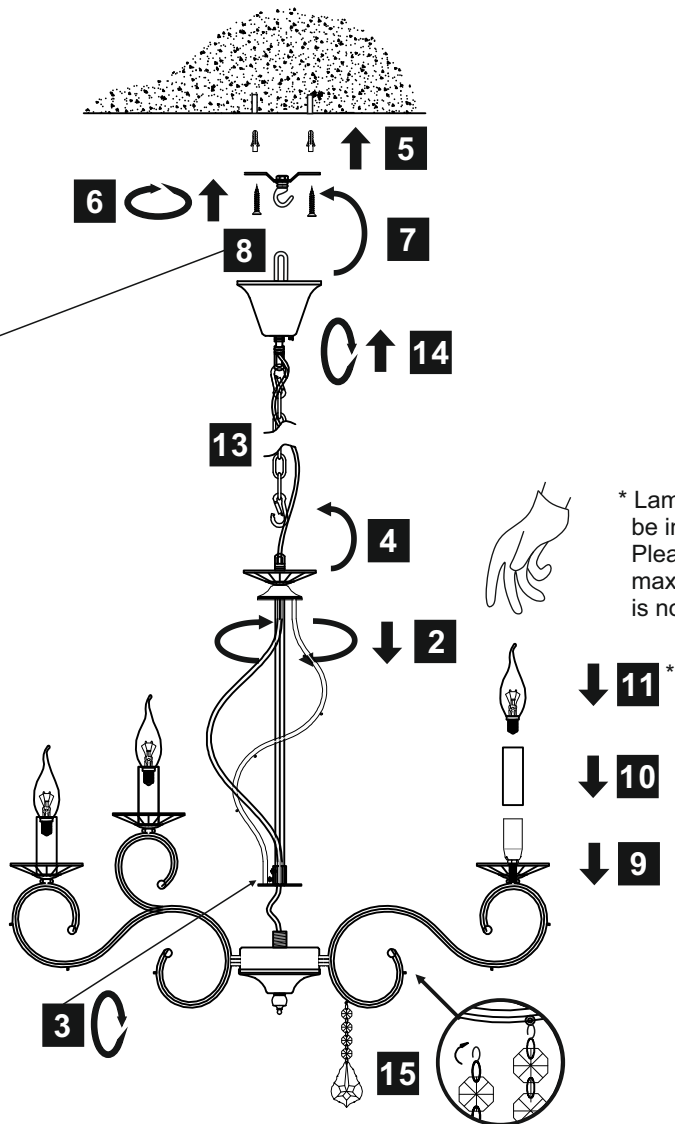
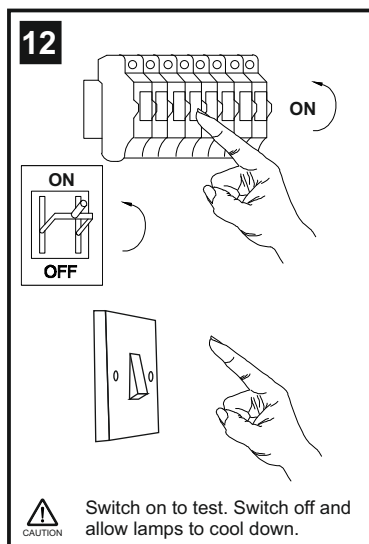
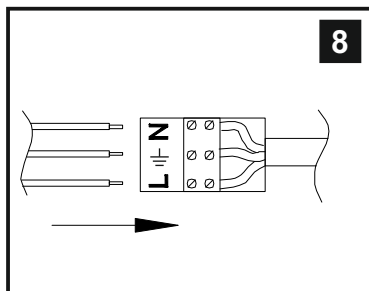
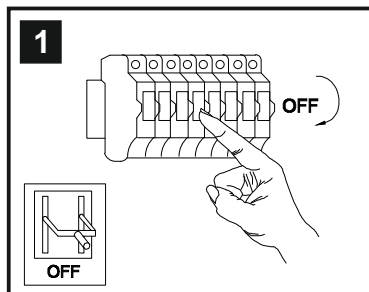


# INSTALLATION INSTRUCTIONS

(ILLUSTRATIONS ARE FOR GUIDANCE PURPOSES ONLY.  
ACTUAL PRODUCT MAY DIFFER FROM THE IMAGES SHOWN)



- (1) Prior to installation carefully unpack and check all the components and accessories are as per details enclosed.
- (2) These instructions should be used in conjunction with the installation guidelines included.



Voltage: 230V - 50/60Hz  
Lampholder: E14/SES  
Lamps: 15 x 60W Max



WITH SUITABLE  
DIMMER/LAMP

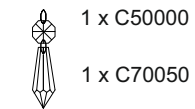
COMPATIBLE



Torino IL303110+5 / IL303210+5

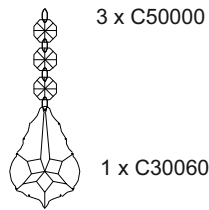
**diyas®**

# LIST OF COMPONENTS



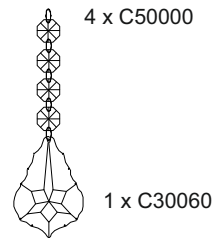
1 x C50000  
1 x C70050

A



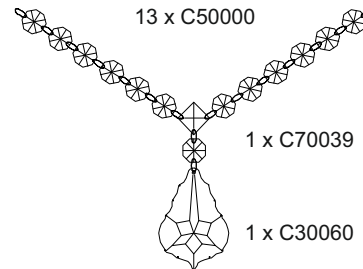
3 x C50000  
1 x C30060

B



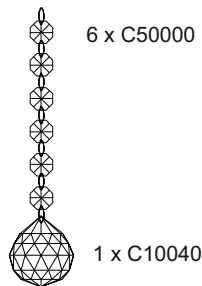
4 x C50000  
1 x C30060

C



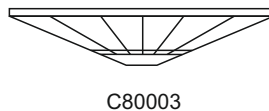
13 x C50000  
1 x C70039  
1 x C30060

D



6 x C50000  
1 x C10040

E



C80003

F



Chain  
Cover



Lampholder  
Sleeve

## Crystal Accessories

Crystal Strand A	16 Pcs	
Crystal Strand B	20 Pcs	
Crystal Strand C	20 Pcs	
Crystal Strand D	10 Pcs	
Crystal Strand E	1 Pcs	
Crystal Sconce F	15 Pcs	
Chain Cover	1 Pcs	
Lampholder Sleeve	15 Pcs	

## Installation Pack

White Gloves	2 Pcs	
Installation Instructions	2 Pages	
Installation Guidelines	2 Pages	
Fixing Screw & Plug	2 Sets	
Additional Crystal Links	3 Pcs Each	

Contents Checked By

Torino IL303110+5 / IL303210+5

**diyas®**