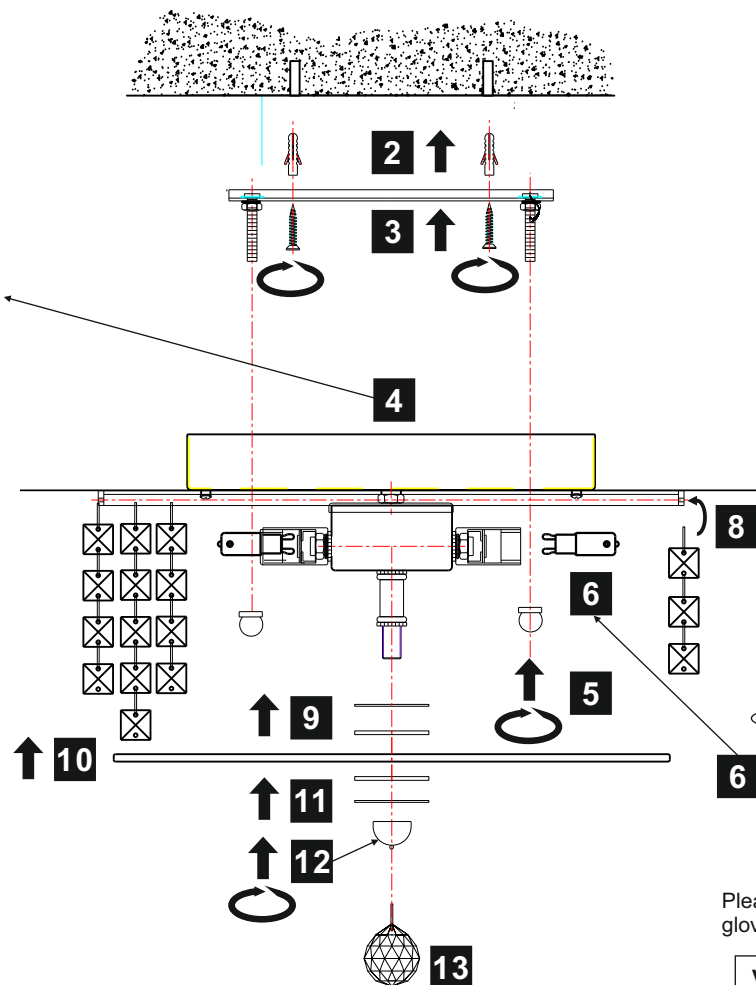
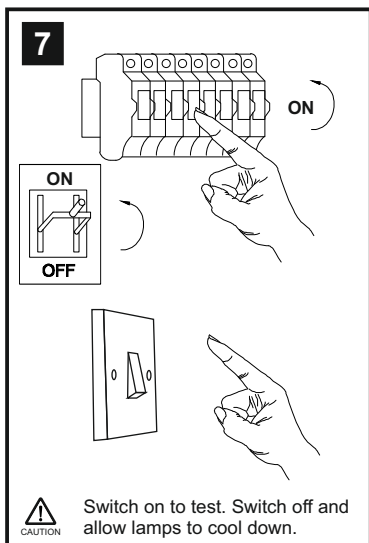
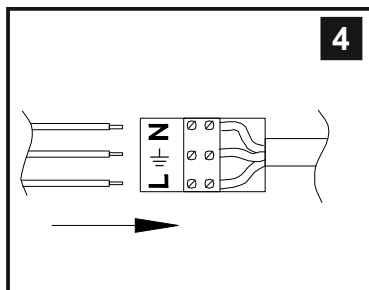
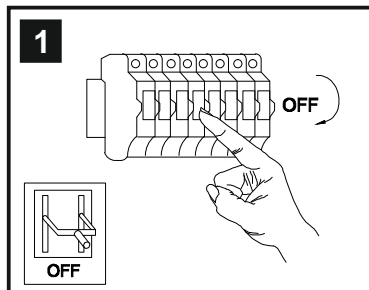


# INSTALLATION INSTRUCTIONS

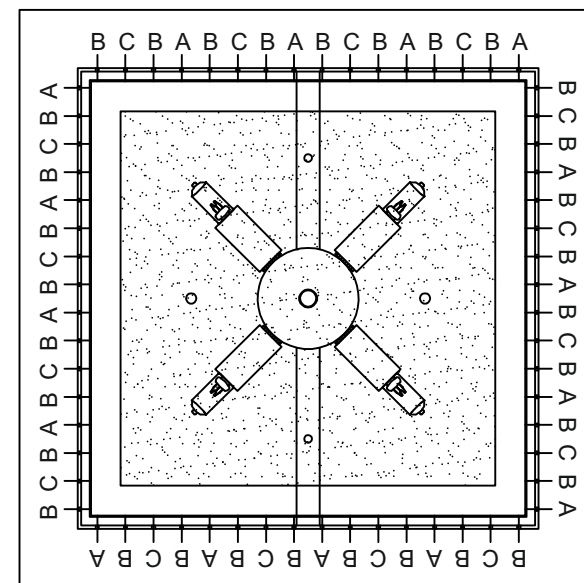
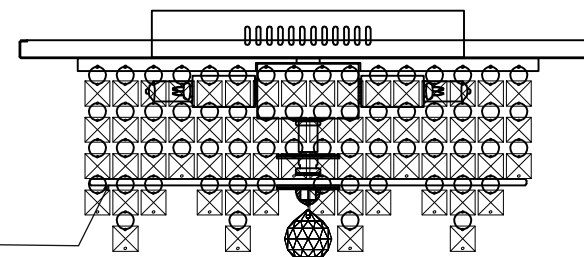
(ILLUSTRATIONS ARE FOR GUIDANCE PURPOSES ONLY.  
ACTUAL PRODUCT MAY DIFFER FROM THE IMAGES SHOWN)



- (1) Prior to installation carefully unpack and check all the components and accessories are as per details enclosed.
- (2) These instructions should be used in conjunction with the installation guidelines included.



Replacement Glass  
(ILG30262)



Please use the  
gloves provided.

Voltage: 230V - 50/60Hz  
Lampholder: G9  
Lamps: 4 x 33W Max



COMPATIBLE



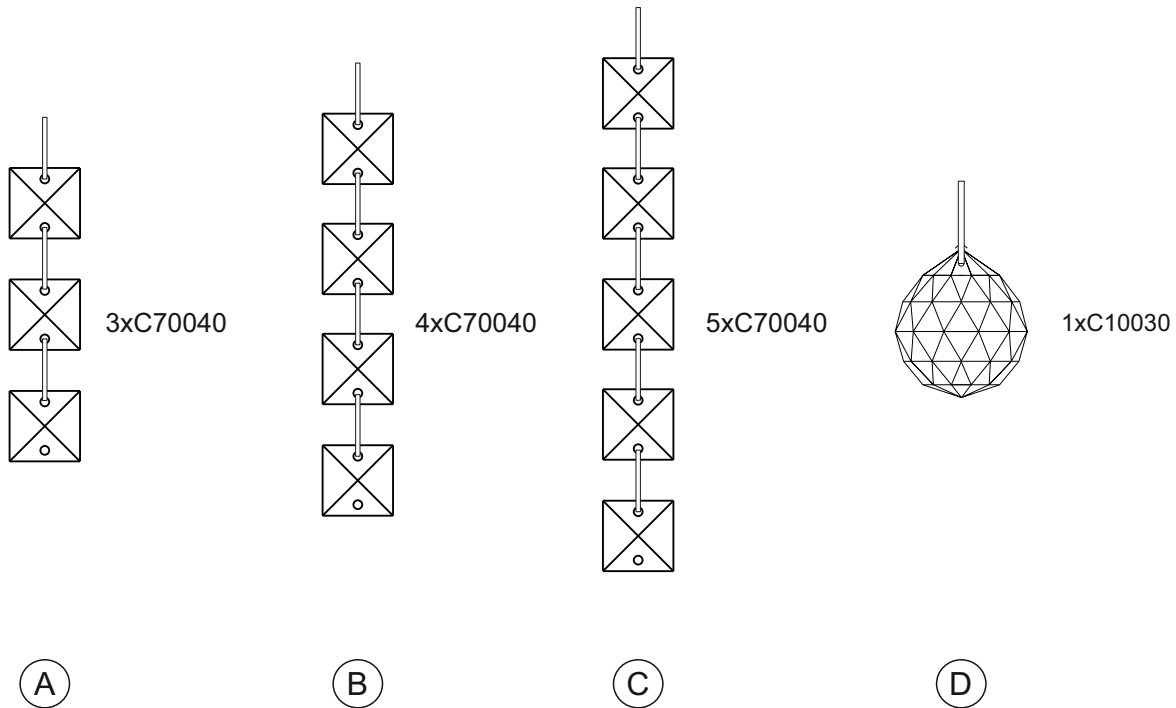
WITH SUITABLE  
DIMMER



Esta IL30262

**diyas**

## LIST OF COMPONENTS



### Crystal Accessories

Crystal Strand A	16 Pcs	
Crystal Strand B	32 Pcs	
Crystal Strand C	16 Pcs	
Crystal D	1 Pc	

### Installation Pack

White Gloves	2 Pcs	
Installation Instructions	2 Pages	
Installation Guidelines	2 Pages	
Fixing Screw and Plug	2 Sets	
Additional Crystal Links	3 Pcs Each	

**Contents Checked By**

**Esta IL30262**

**diyas®**