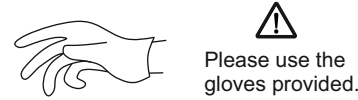
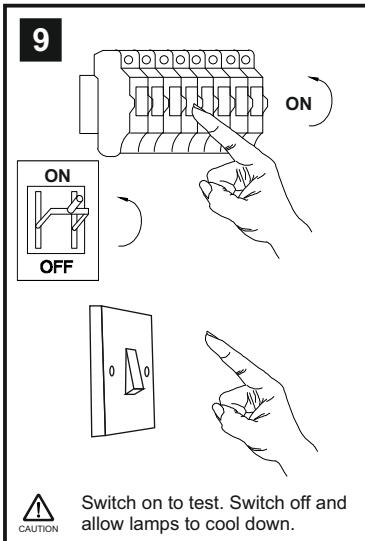
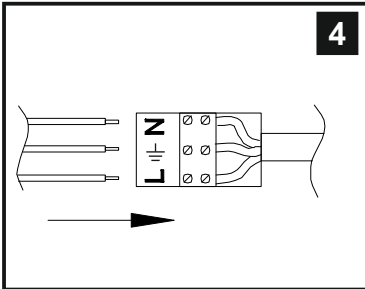
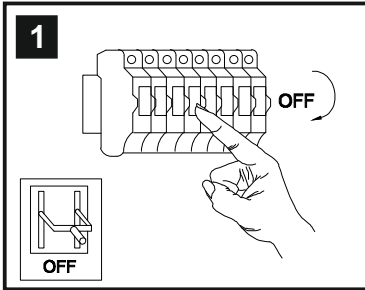


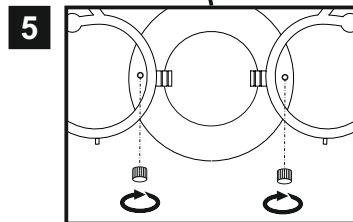
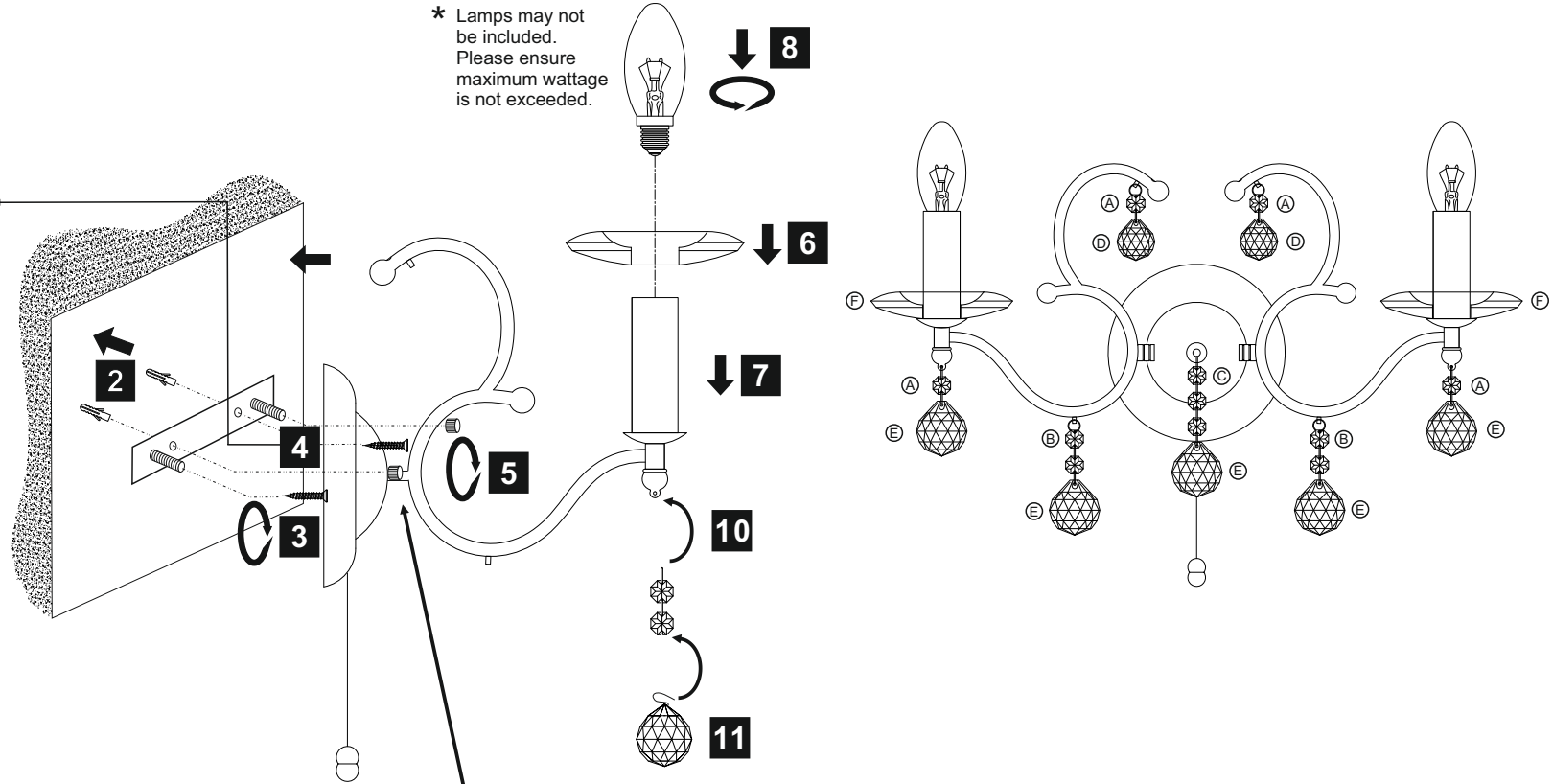
INSTALLATION INSTRUCTIONS

(ILLUSTRATIONS ARE FOR GUIDANCE PURPOSES ONLY.
ACTUAL PRODUCT MAY DIFFER FROM THE IMAGES SHOWN)

- ⚠ (1) Prior to installation carefully unpack and check all the components and accessories are as per details enclosed.
- (2) These instructions should be used in conjunction with the installation guidelines included.



* Lamps may not be included. Please ensure maximum wattage is not exceeded.



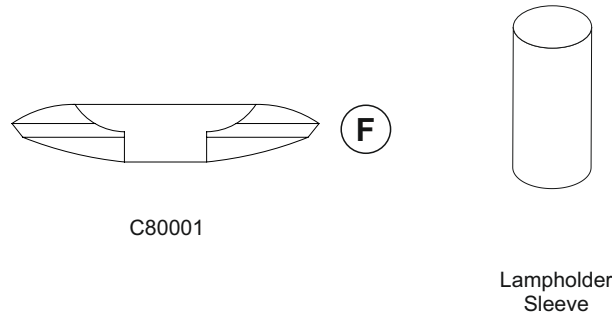
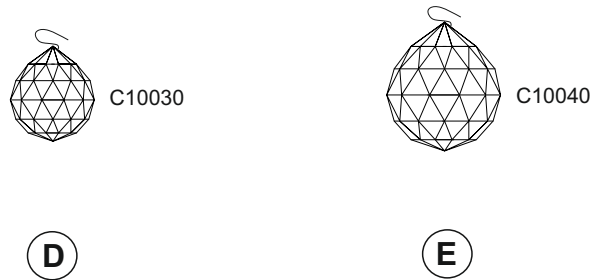
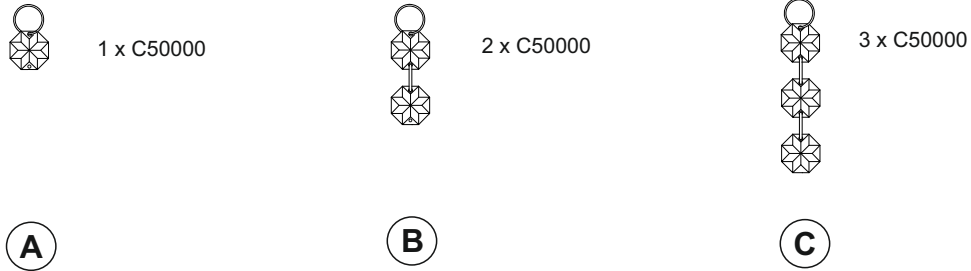
Voltage: 230V - 50/60Hz
Lampholder: SES/E14
Lamps: 2 x 60W Max



Zinta IL30122 / IL30222

diyás

LIST OF COMPONENTS



Crystal Accessories		
Crystal Strand A	4 Pcs	
Crystal Strand B	2 Pcs	
Crystal Strand C	1 Pcs	
Crystal D	2 Pc	
Crystal E	5 Pcs	
Crystal Sconce F	2 Pcs	
29mm x 60mm Lampholder Sleeve	2 Pcs	

Installation Pack		
White Gloves	2 Pcs	
Installation Instructions	2 Pages	
Installation Guidelines	2 Pages	
Additional Crystal Links	3 Pcs Each	
Fixing Screw & Plug	2 Sets	

Contents Checked By	
----------------------------	--

Zinta IL30122 / IL30222

