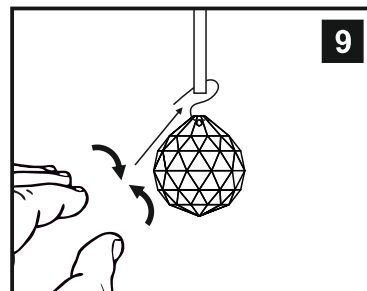
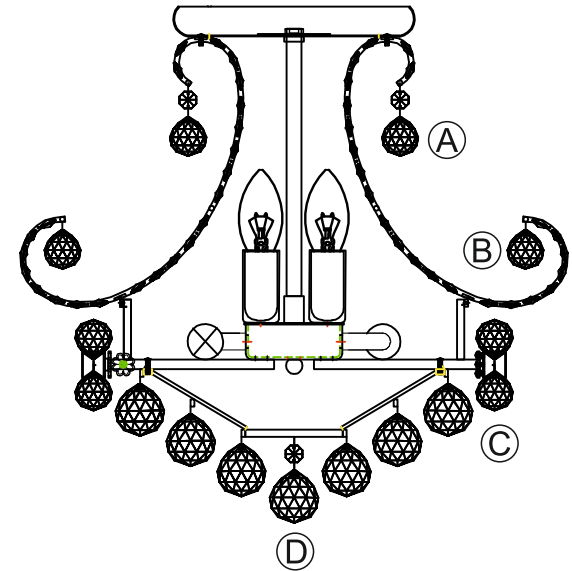
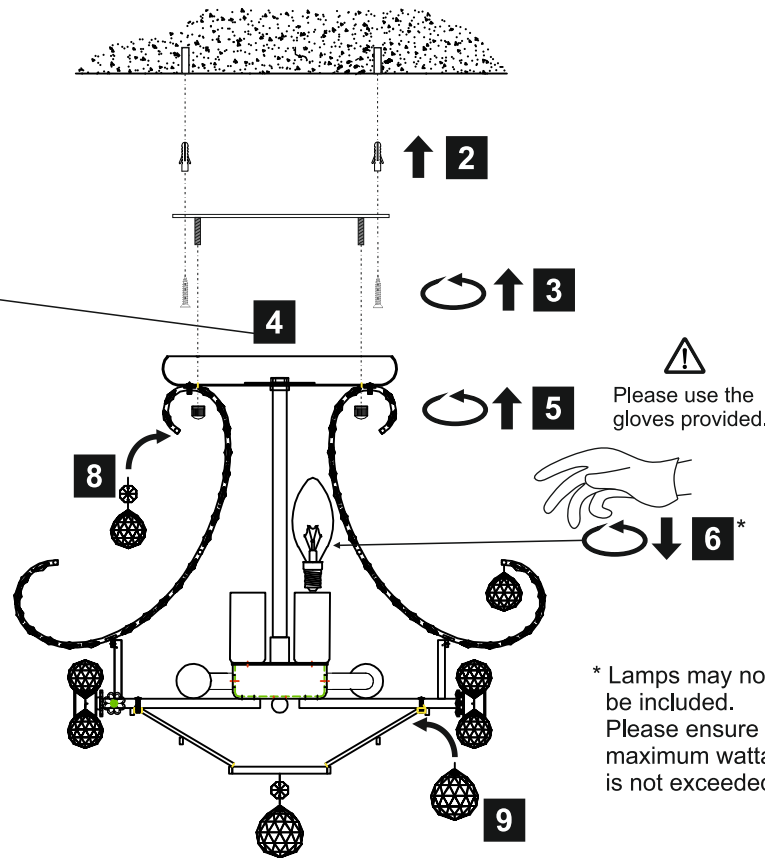
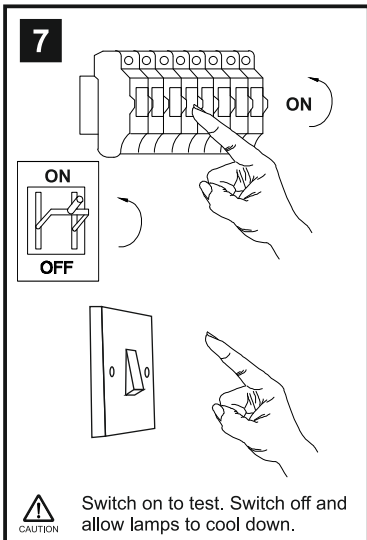
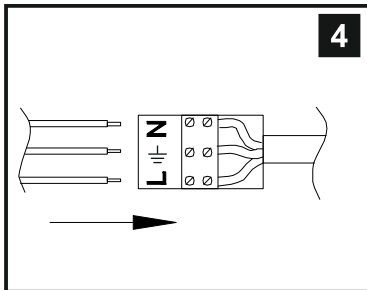
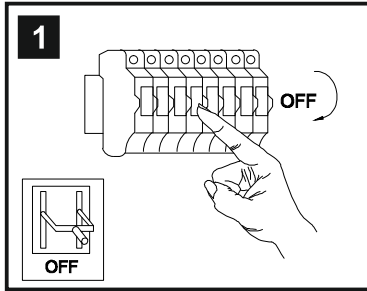


INSTALLATION INSTRUCTIONS

(ILLUSTRATIONS ARE FOR GUIDANCE PURPOSES ONLY.
ACTUAL PRODUCT MAY DIFFER FROM THE IMAGES SHOWN)



- (1) Prior to installation carefully unpack and check all the components and accessories are as per details enclosed.
- (2) These instructions should be used in conjunction with the installation guidelines included.



Voltage: 230V - 50/60Hz
Lampholder: E14/SES
Lamps: 9 x 60W Max



COMPATIBLE

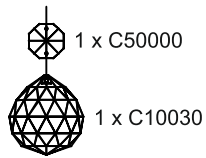


WITH SUITABLE DIMMER/LAMP

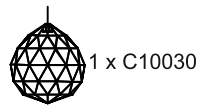
Pearl IL30006/IL30026

diyás[®]

LIST OF COMPONENTS



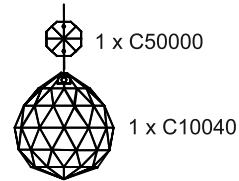
(A)



(B)



(C)



(D)

Crystal Accessories

Crystal Strand A	9 Pcs	
Crystal B	9 Pcs	
Crystal C	36 Pcs	
Crystal Strand D	1 Pc	

Installation Pack

White Gloves	2 Pcs	
Installation Instructions	2 Pages	
Installation Guidelines	2 Pages	
Fixing Screw and Plugs	6 Sets	
Additional Crystal Links	2 Pcs Each	

Contents Checked By

Pearl IL30006/IL30026

diyas®